

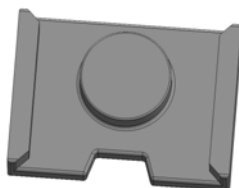
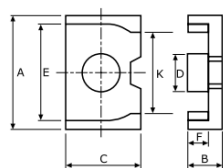


# 湖南创一电子科技股份有限公司

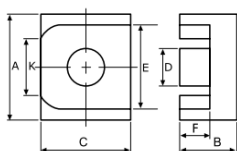
## CYGE ELECTRONIC TECHNOLOGY (HUNAN) CO.,LTD

Type : ER Cores

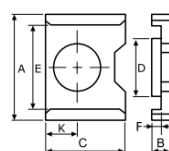
Type:1



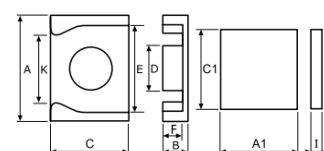
Type:2



Type:3



Type:4



规格 Type	尺寸Dimensions (mm)										图号 Fig.
	A	B	C	D	E	F	K	A1	C1	I	
ER-8.70-4.00-2.65	8.70 ± 0.15	2.65 ± 0.10	4.00 ± 0.10	2.40 ± 0.10	7.20 ± 0.15	1.90 ± 0.10	6.42 ± 0.15	-	-	-	4
ER-9.95-6.50-3.10	9.95 ± 0.15	3.10 ± 0.10	6.50 ± 0.10	4.35 ± 0.10	7.90 ± 0.15	2.00 ± 0.10	6.50 ± 0.15	-	-	-	1
ER-9.90-7.80-2.15	9.90 ± 0.15	2.15 ± 0.10	7.80+0.10/-0.13	3.70 ± 0.10	8.10+0.15/-0.10	1.10+0.08/-0.07	6.50 ± 0.15	-	-	-	1
ER-9.90-7.80-2.23	9.90 ± 0.20	2.23 ± 0.10	7.80 ± 0.15	3.70 ± 0.10	8.10 ± 0.20	1.13 ± 0.10	6.50 ± 0.15	-	-	-	1
ER-12.20-9.00-2.50	12.20 ± 0.15	2.50 ± 0.08	9.00 ± 0.13/-0.12	5.55 ± 0.10	10.00 ± 0.15	1.00 ± 0.08	8.60 ± 0.15	-	-	-	1
ER-12.20-9.00-2.60	12.20 ± 0.20	2.60 ± 0.08	9.00 ± 0.15	5.55 ± 0.10	10.00 ± 0.20	1.10 ± 0.08	8.60 ± 0.15	-	-	-	1
ER-12.20-9.00-2.87	12.20 ± 0.20	2.87 ± 0.06	9.00 ± 0.15	5.55 ± 0.10	10.00 ± 0.20	1.37 ± 0.06	8.60 ± 0.15	-	-	-	1
ER-12.20-9.00-3.50	12.20 ± 0.20	3.50 ± 0.08	9.00 ± 0.15	5.55 ± 0.10	10.00 ± 0.15	2.00 ± 0.08	8.60 ± 0.15	-	-	-	1
ER-12.20-9.0-4.00	12.20 ± 0.20	4.00 ± 0.06	9.00 ± 0.15	5.55 ± 0.10	10.00 ± 0.15	2.50 ± 0.06	8.60 ± 0.15	-	-	-	1
ER-12.45-9.00-2.55	12.45 ± 0.15	2.55 ± 0.08	9.00 ± 0.15	5.60 ± 0.10	10.25 ± 0.15	1.15 +0.10/-0.08	8.60 ± 0.15	-	-	-	1
ER-12.85-9.30-3.96	12.85 ± 0.20	3.96 ± 0.10	9.30 ± 0.25	5.30 ± 0.15	10.45min	2.66min	8.70min	12.85 ± 0.20	9.30 ± 0.25	1.13 ± 0.05	4
ER-13.60-9.35-2.25	13.60 ± 0.15	2.25 ± 0.10	9.35 ± 0.10	5.60 ± 0.08/-0.15	11.05min	1.20 ± 0.10	3.80 ± 0.10	-	-	-	3
ER-14.50-11.30-4.10	14.50 ± 0.20	4.10 ± 0.10	11.30 ± 0.20	6.00 ± 0.20	12.20 ± 0.15	2.90 ± 0.10	8.30 ± 0.15	-	-	-	2
ER-14.50-11.30-5.60	14.50 ± 0.30	5.60 ± 0.10	11.30 ± 0.25	6.00 ± 0.25	12.20 ± 0.30	4.40 ± 0.10	9.27 ± 0.30	14.50 ± 0.30	11.30 ± 0.25	1.20 ± 0.10	4
ER-25.0-18.0-6.25	25.00 ± 0.40	6.25 ± 0.15	18.00 ± 0.30	11.00 ± 0.20	22.00 ± 0.40	3.75 ± 0.15	14.80min	25.00 ± 0.40	18.00 ± 0.30	2.30 ± 0.10	4
ER-32.7-28.9-7.4	32.70 ± 0.50	7.40 ± 0.20	28.90 ± 0.50	15.40 ± 0.30	27.30 ± 0.50	4.20 ± 0.20	19.50 ± 0.35	-	-	-	4

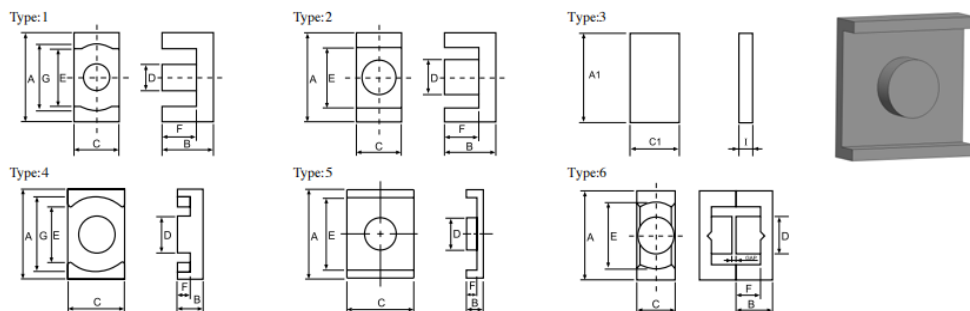


湖南创一电子科技股份有限公司  
CYGE ELECTRONIC TECHNOLOGY (HUNAN) CO.,LTD

规格 Type	磁芯参数					图号 Fig.
	Cl(mm <sup>-1</sup> )	Le(mm)	Ae(mm <sup>2</sup> )	Ve(mm <sup>3</sup> )	Wt(g/set)	
ER-8.70-4.00-2.65	2.73	15.14	5.55	84.12	0.44	4
ER-9.95-6.50-3.10	1.06	15.09	16.01	241.59	0.62	1
ER-9.90-7.80-2.15	0.75	11.51	15.2	174.95	1.16	1
ER-9.90-7.80-2.23	0.78	11.8	15.12	178.42	1.2	1
ER-12.20-9.00-2.50	0.5	13.39	26.72	357.78	2.34	1
ER-12.20-9.00-2.60	0.48	14.66	30.7	450.06	2.64	1
ER-12.20-9.00-2.87	0.56	14.87	26.46	393.46	2.52	1
ER-12.20-9.00-3.50	0.54	13.89	25.62	355.86	2.52	1
ER-12.20-9.0-4.00	0.74	19.36	25.95	502.39	2.64	1
ER-12.45-9.00-2.55	0.59	14.01	23.94	335.4	1.92	1
ER-12.85-9.30-3.96	0.78	16.72	21.47	358.98	1.85	4
ER-13.60-9.35-2.25	0.69	14.66	21.27	311.68	2.02	3
ER-14.50-11.30-4.10	0.7	20.12	28.53	574.02	3.46	2
ER-14.50-11.30-5.60	0.76	21.71	28.48	618.3	3.12	4
ER-25.0-18.0-6.25	0.28	25.93	92.3	2393.8	13.55	4
ER-32.7-28.9-7.4	0.19	39.29	208.9	8211	49	4



Type : ER Cores



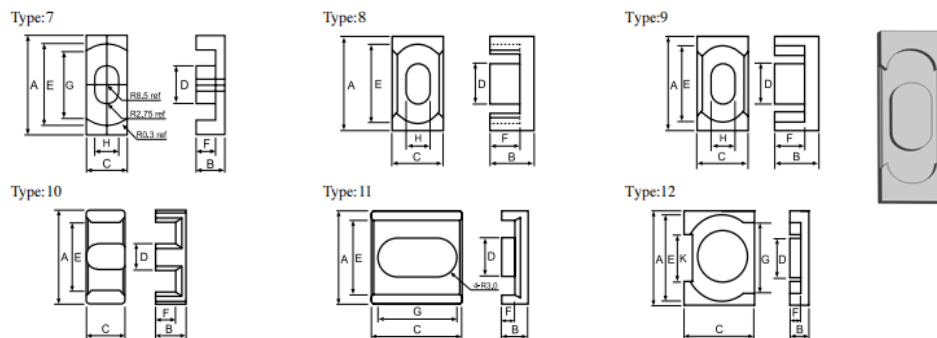
规格 Type	尺寸Dimensions (mm)											图号 Fig.
	A	B	C	D	E	F	G	H	A1	C1	I	
ER-6.8-2.5-1.48	6.80 ± 0.15	1.48 ± 0.08	2.50 ± 0.10	2.05 ± 0.10	5.80min	0.99 ± 0.08	-	-	-	-	-	2
ER-7.50-4.00-2.50	7.50 ± 0.15	2.50 ± 0.10	4.00 ± 0.10	2.60 ± 0.10	5.70 ± 0.10	1.75 ± 0.07	6.22 + 0.13/-	-	-	-	-	1
ERI-7.50-4.00-2.15	7.50 ± 0.15	2.15 ± 0.10	4.00 ± 0.10	2.60 ± 0.10	5.70 ± 0.10	1.40 ± 0.10	6.22 + 0.13/-	-	7.50 ± 0.15	4.00 ± 0.10	0.75 ± 0.10	1 + 3
ER-8.00-4.00-2.50	8.00 ± 0.15	2.50 ± 0.10	4.00 ± 0.10	2.60 ± 0.10	5.70 ± 0.10	1.73 ± 0.10	6.55min	-	-	-	-	5
ER-9.35-4.90-1.80	9.35 ± 0.15	1.80 ± 0.05	4.90 ± 0.10	3.40 ± 0.10	7.00min	0.93 + 0.07/-	7.40min	-	-	-	-	1
ER-9.35-4.90-2.45	9.35 ± 0.15	2.45 ± 0.05	4.90 ± 0.10	3.40 ± 0.10	7.00min	1.67 ± 0.07	7.40min	-	-	-	-	1
ER-10.83-5.90-2.65	10.83 + 0.18/-0.17	2.65 ± 0.05	5.90 ± 0.10	4.12 + 0.13/-	7.90min	1.77 ± 0.12	8.98 ± 0.15	-	-	-	-	1
ER-10.83-5.90-1.93	10.83 + 0.18/-0.17	1.93 ± 0.05	5.90 ± 0.10	4.12 + 0.13/-	7.90min	1.05 + 0.08/-	8.85 ± 0.15	-	-	-	-	1
ER-10.83-5.90-2.45	10.83 + 0.18/-0.17	2.45 ± 0.05	5.90 ± 0.10	4.12 + 0.13/-	7.90min	1.57 + 0.08/-	8.85 ± 0.15	-	-	-	-	1
ER-11.63-5.90-2.58	11.63 ± 0.20	2.58 ± 0.10	5.90 ± 0.20	4.12 ± 0.15	8.70min	1.70 ± 0.10	9.65 ± 0.20	-	-	-	-	1
ER-12.80-8.70-2.85	12.80 ± 0.20	2.85 ± 0.06	8.70 ± 0.20	5.00 ± 0.10	9.05 ± 0.15	1.75 ± 0.06	11.20 ± 0.20	-	-	-	-	4
ER-12.80-8.70-2.70	12.80 ± 0.20	2.70 ± 0.06	8.70 ± 0.20	5.00 ± 0.10	9.05 ± 0.15	1.60 ± 0.06	11.20 ± 0.20	-	-	-	-	1
ER-12.80-8.70-2.80	12.80 ± 0.20	2.80 ± 0.06	8.70 ± 0.20	5.00 ± 0.10	9.05 ± 0.15	1.70 ± 0.06	11.20 ± 0.20	-	-	-	-	4
ER-12.80-8.70-2.85	12.80 ± 0.20	2.85 ± 0.06	8.70 ± 0.20	5.00 ± 0.10	9.05 ± 0.15	1.75 ± 0.06	11.20 ± 0.20	-	12.80 ± 0.20	8.70 ± 0.20	1.10 ± 0.05	3 + 4
ER-14.50-9.25-3.50	14.50 ± 0.25	3.50 ± 0.10	9.25 ± 0.25	5.80 ± 0.20	-	1.70 ± 0.10	12.20 ± 0.25	-	-	-	-	4
ER-14.50-6.70-2.95	14.50 ± 0.20	2.95 ± 0.05	6.70 ± 0.10	4.70 ± 0.10	11.80 ± 0.20	1.60 ± 0.10	-	-	-	-	-	2
ER-14.50-6.70-3.40	14.50 ± 0.20	3.40 ± 0.10	6.70 ± 0.10	4.70 ± 0.10	11.80 ± 0.20	2.10 ± 0.10	-	-	-	-	-	2
ER-14.50-6.70-4.70	14.50 ± 0.20	4.70 ± 0.10	6.70 ± 0.10	4.70 ± 0.10	11.80 ± 0.20	3.40 ± 0.10	-	-	-	-	-	2
ER-14.80-6.70-3.10	14.80 ± 0.20	3.10 ± 0.05	6.70 ± 0.10	4.70 ± 0.10	12.10 ± 0.20	1.80 ± 0.10	-	-	-	-	-	2
ER-18.00-9.70-3.15	18.00 ± 0.35	3.15 ± 0.10	9.70 ± 0.20	6.20 ± 0.15	13.50min	1.60 ± 0.10	15.60 ± 0.30	-	-	-	-	4
ER-18.00-9.70-3.50	18.00 ± 0.35	3.50 ± 0.10	9.70 ± 0.20	6.20 ± 0.15	13.50min	1.95 ± 0.10	15.60 ± 0.30	-	-	-	-	4



湖南创一电子科技股份有限公司  
CYGE ELECTRONIC TECHNOLOGY (HUNAN) CO.,LTD

规格 Type	磁芯参数					图号 Fig.
	Cl(mm <sup>-1</sup> )	Le(mm)	Ae (mm <sup>2</sup> )	Ve (mm <sup>3</sup> )	Wt (g/set)	
ER-6.8-2.5-1.48	3.98	9.91	2.49	24.67	0.07	2
ER-7.50-4.00-2.50	2.26	13.06	5.78	75.51	0.35	1
ERI-7.50-4.00-2.15	1.65	9.65	5.86	56.55	0.31	1+3
ER-8.00-4.00-2.50	2.34	13.97	5.97	83.42	0.45	5
ER-9.35-4.90-1.80	1.22	11.14	9.16	102.04	0.48	1
ER-9.35-4.90-2.45	1.56	13.63	8.73	118.99	0.62	1
ER-10.83-5.90-2.65	1.39	16.32	11.72	191.32	1.1	1
ER-10.83-5.90-1.93	1.01	12.14	11.92	144.7	0.8	1
ER-10.83-5.90-2.45	1.17	14.18	12.13	172	0.9	1
ER-11.63-5.90-2.58	1.29	15.29	11.87	181.49	1	1
ER-12.80-8.70-2.85	0.91	18.1	19.9	360	1.86	4
ER-12.80-8.70-2.70	0.82	16.24	19.82	321.88	1.84	1
ER-12.80-8.70-2.80	0.91	16.6	18.3	303.78	1.88	4
ER-12.80-8.70-2.85	0.64	13.23	20.78	274.69	1.13	3+4
ER-14.50-9.25-3.50	0.64	19.77	30.85	609.89	3.28	4
ER-14.50-6.70-2.95	1.07	18.38	17.13	314.85	1.69	2
ER-14.50-6.70-3.40	1.17	20.18	17.18	346.69	1.9	2
ER-14.50-6.70-4.70	1.49	25.46	17.13	436.13	2.38	2
ER-14.80-6.70-3.10	1.1	19.47	17.63	343.25	0.91	2
ER-18.00-9.70-3.15	0.67	20.85	31.31	652.81	3.36	4
ER-18.00-9.70-3.50	0.74	22.37	30.26	676.92	3.78	4

Type : ER Cores



规格 Type	尺寸Dimensions (mm)											图号 Fig.
	A	B	C	D	E	F	G	H	A1	C1	I	
ER-18.0-7.20-4.00	18.00 ± 0.35	4.00 ± 0.10	10.00 ± 0.20	7.20 ± 0.10	14.00 ± 0.20	2.00 ± 0.10	-	-	-	-	-	5
ER-18.0-6.00-3.60	18.00 ± 0.35	3.60 ± 0.15	6.00 ± 0.20	6.00 ± 0.15	14.40 ± 0.30	1.60 ± 0.15	-	-	-	-	-	6
ER-18.20-5.20-8.50	18.20 ± 0.20	8.50 ± 0.15	5.20 ± 0.10	5.20 ± 0.10	13.00mi n	6.00 ± 0.15	4.00 + 0.30/-	-	-	-	-	2
ER-19.05-14.75-3.45	19.05 ± 0.25	3.45 ± 0.10	14.75 ± 0.25	6.80 ± 0.10	16.30 ± 0.15	2.20 ± 0.10	-	-	-	-	-	5
ER-19.00-5.50-8.00	19.00 ± 0.35	8.00 ± 0.20	5.50 ± 0.20	5.10 ± 0.20	14.50 ± 0.30	5.65 ± 0.15	-	-	-	-	-	2
ER-19.10-14.40-2.87	19.10 ± 0.25	2.87 ± 0.13	14.40 ± 0.18	6.43 ± 0.15	16.46 ± 0.20	1.65min	-	-	-	-	-	5
ER-19.80-6.60-4.30	19.80 ± 0.30	4.30 ± 0.15	6.60 ± 0.20	6.00 ± 0.20	15.80 + 0.55/-	2.10 ± 0.15	-	-	-	-	-	4
ER-20.00-14.00-8.20	20.00 ± 0.30	8.20 ± 0.10	14.00 ± 0.30	8.80 ± 0.15	13.10 ± 0.25	6.00 ± 0.15	18.00 ± 0.30	-	-	-	-	4
ER-20.00-14.00-3.00	20.00 ± 0.35	3.00 ± 0.10	10.00 ± 0.20	6.20 ± 0.20	17.00 ± 0.30	1.65 ± 0.10	-	-	-	-	-	2
ER-20.00-14.00-5.70	20.00 ± 0.30	5.70 ± 0.10	14.00 ± 0.30	8.80 ± 0.15	13.10 ± 0.25	3.50 ± 0.15	18.00 ± 0.30	-	20.00 ± 0.30	14.00 ± 0.30	2.20 ± 0.05	3 + 4
ER-20.00-14.00-8.20	20.00 ± 0.30	8.20 ± 0.10	14.00 ± 0.30	8.80 ± 0.15	13.10 ± 0.25	6.00 ± 0.15	18.00 ± 0.30	-	20.00 ± 0.30	14.00 ± 0.30	2.20 ± 0.05	3 + 4
ER-20.50-9.40-6.25	20.50 ± 0.30	6.25 ± 0.20	9.40 ± 0.20	7.50 ± 0.20	17.00 ± 0.30	4.30 ± 0.15	14.00mi n	5.50 ± 0.15	-	-	-	7
ER-21.20-7.80-9.00	21.20 ± 0.40	9.00 ± 0.15	7.80 ± 0.15	5.66 ± 0.20	15.90 ± 0.40	6.50 ± 0.20	-	-	-	-	-	10
ER-22.20-15.80-6.70	22.20 ± 0.30	6.70 ± 0.10	15.80 ± 0.30	10.00 ± 0.20	18.20 ± 0.30	4.20 ± 0.15	-	-	22.20 ± 0.30	15.80 ± 0.30	2.50 ± 0.05	3 + 5
ER-22.60-6.50-4.45	22.60 ± 0.40	4.45 ± 0.15	6.50 ± 0.25	6.50 ± 0.15	17.50 ± 0.35	2.10 ± 0.10	-	-	-	-	-	1
ER-22.75-14.00-7.10	22.75 ± 0.25	7.10 ± 0.10	14.00 ± 0.30	8.80 ± 0.15	15.40mi n	4.90 ± 0.15	20.25 ± 0.25	-	22.75 ± 0.25	14.00 ± 0.30	2.20 ± 0.10	3 + 4
ER-23.20-12.50-3.60	23.20 ± 0.45	3.60 ± 0.10	12.50 ± 0.25	8.00 ± 0.20	17.50mi n	1.60 ± 0.15	20.20 ± 0.40	-	-	-	-	4
ER-25.00-18.00-6.05	25.00 ± 0.40	6.05 ± 0.10	18.00 ± 0.30	11.00 ± 0.20	14.50mi n	3.55 ± 0.15	22.00 ± 0.40	-	-	-	-	4
ER-25.00-18.00-4.10	25.00 ± 0.40	4.10 ± 0.10	18.00 ± 0.30	11.00 ± 0.20	14.50mi n	1.70 ± 0.15	22.00 ± 0.40	-	-	-	-	4
ER-25.00-18.00-6.05	25.00 ± 0.40	6.05 ± 0.05	18.00 ± 0.30	11.00 ± 0.20	14.50mi n	3.55 ± 0.15	22.00 ± 0.40	-	25.00 ± 0.40	18.00 ± 0.30	2.30 ± 0.05	3 + 4
ER-25.00-14.80-5.50	25.00 ± 0.50	5.50 ± 0.10	14.80 ± 0.30	9.40 ± 0.20	18.30mi n	3.10 ± 0.10	21.70 ± 0.40	-	25.00 ± 0.50	14.80 ± 0.30	2.50 ± 0.10	4



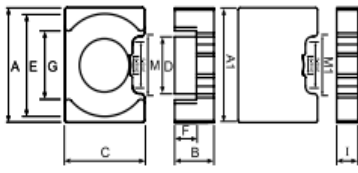
湖南创一电子科技股份有限公司  
CYGE ELECTRONIC TECHNOLOGY (HUNAN) CO.,LTD

规格 Type	磁芯参数					图号 Fig.
	Cl(mm <sup>-1</sup> )	Le(mm)	Ae (mm <sup>2</sup> )	Ve (mm <sup>3</sup> )	Wt (g/set)	
ER-18.0-7.20-4.00	0.46	20.24	44.43	899.26	5	5
ER-18.0-6.00-3.60	0.9	22.27	24.85	553.47	2.84	6
ER-18.20-5.20-8.50	1.75	40.59	23.26	944.02	4.7	2
ER-19.05-14.75-3.45	0.64	23.98	37.45	897.86	4.99	5
ER-19.00-5.50-8.00	1.34	33.89	25.34	858.77	4.8	2
ER-19.10-14.40-2.87	0.67	23.47	35.28	828.09	2.12	5
ER-19.80-6.60-4.30	0.95	26.43	27.7	732.11	3.94	4
ER-20.00-14.00-8.20	0.6	42.05	58.98	2480.11	15.08	4
ER-20.00-14.00-3.00	0.81	23.11	28.66	662.3	3.5	2
ER-20.00-14.00-5.70	0.4	23.8	59.8	1425	7.99	3 + 4
ER-20.00-14.00-8.20	0.48	30.08	59.55	1791.26	10.54	3 + 4
ER-20.50-9.40-6.25	0.96	34.07	35.42	1206.76	7	7
ER-21.20-7.80-9.00	1.36	43.65	32.06	1399.42	8.64	10
ER-22.20-15.80-6.70	0.35	32.69	75.07	2454.04	11.17	3 + 5
ER-22.60-6.50-4.45	0.83	26.83	32.09	860.77	4.54	1
ER-22.75-14.00-7.10	0.5	30.21	60.8	1836.77	9.44	3 + 4
ER-23.20-12.50-3.60	0.48	25.08	51.79	1298.89	6.94	4
ER-25.00-18.00-6.05	0.31	31.84	103.6	3298.6	17.56	4
ER-25.00-18.00-4.10	0.28	24.89	88.99	2214.96	13.3	4
ER-25.00-18.00-6.05	0.29	26.4	89.7	2370	13.57	3 + 4
ER-25.00-14.80-5.50	0.4	28.1	70.4	1978.24	10.4	4

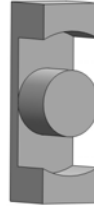
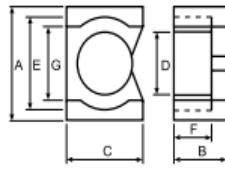


Type : ER Cores

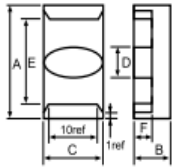
Type:13



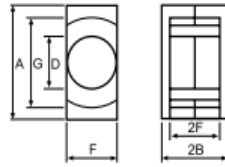
Type:14



Type:15



Type:16



规格 Type	尺寸Dimensions (mm)												图号 Fig.
	A	B	C	D	E	F	G	H	K	A1	C1	I	
ER-25.40-19.00-6.80	25.40 ± 0.50	6.80 ± 0.15	19.00 ± 0.35	10.00 ± 0.25	20.00mi n	4.40 ± 0.20	-	-	-	25.40 ± 0.50	19.00 ± 0.35	2.40 ± 0.15	3 + 5
ER-25.50-7.50-4.60	25.50 ± 0.50	4.60 ± 0.10	7.50 ± 0.30	7.50 ± 0.20	19.80mi n	2.00 ± 0.15	-	-	-	-	-	-	1
ER-25.50-9.80-5.25	25.50 ± 0.40	5.25 ± 0.10	9.80 ± 0.15	8.20 ± 0.15	16.70 ± 0.30	3.25 ± 0.15	18.50 ± 0.30	-	-	-	-	-	1
ER-25.70-25.35-5.25	25.70 ± 0.40	5.25 ± 0.15	25.35 ± 0.40	6.50 ± 0.20	19.50 ± 0.40	3.00 ± 0.15	24.35 ± 0.35	-	-	-	-	-	11
ER-26.60-10.80-5.00	26.60 ± 0.50	5.00 ± 0.15	10.80 ± 0.30	11.00 ± 0.25	22.40 ± 0.50	2.80 ± 0.15	-	6.00 ± 0.20	-	-	-	-	8
ER-27.00-14.50-4.95	27.00 ± 0.40	4.95 ± 0.15	14.50 ± 0.30	10.70 ± 0.20	16.50mi n	2.10 ± 0.15	22.50 ± 0.40	-	-	-	-	-	1
ER-27.00-12.50-4.95	27.00 ± 0.40	4.95 ± 0.15	12.50 ± 0.30	10.00 ± 0.20	-	2.10 ± 0.15	22.50 ± 0.40	-	-	-	-	-	1
ER-28.00-22.65-5.60	28.00 ± 0.50	5.60 ± 0.20	22.65 ± 0.50	11.00 ± 0.20	24.20 ± 0.50	3.00 ± 0.20	19.80 ± 0.40	-	13.10 ± 0.40	-	-	-	12
ER-28.0-12.0-6.20	28.00 ± 0.35	6.20 ± 0.15	12.00 ± 0.25	9.00 ± 0.20	21.50 ± 0.35	3.60 ± 0.15	-	23.40 ± 0.35	-	28.00 ± 0.35	12.00 ± 0.25	2.60 ± 0.15	1 + 3
ER-29.80-9.50-4.85	29.80 ± 0.80	4.85 ± 0.10	9.50 ± 0.30	7.87 ± 0.25	24.00 ± 0.75	2.03 ± 0.13	-	-	-	-	-	-	2
ER-29.80-9.50-4.60	29.80 ± 0.80	4.60 ± 0.20	9.50 ± 0.30	9.50 ± 0.30	20.40mi n	1.80 ± 0.15	22.70 ± 0.70	-	-	-	-	-	4
ER-30.00-20.00-8.00	30.00 ± 0.40	8.00 ± 0.15	20.00 ± 0.30	11.00 ± 0.20	19.45 ± 0.30	5.30 ± 0.20	26.00 ± 0.30	-	-	-	-	-	4
ER-30.00-20.00-6.00	30.00 ± 0.40	6.00 ± 0.15	20.00 ± 0.30	11.00 ± 0.20	19.45 ± 0.30	3.30 ± 0.15	26.00 ± 0.30	-	-	-	-	-	1
ER-32.00-20.35-6.35	32.00 ± 0.40	6.35 ± 0.13	20.35 ± 0.30	12.05 ± 0.25	22.66mi n	3.18 ± 0.20	28.93mi n	-	-	-	-	-	4
ER-32.00-23.00-13.50	32.00 ± 0.50	13.50 ± 0.25	23.00 ± 0.40	15.00 ± 0.20	27.00 ± 0.30	7.65 ± 0.35	18.00 ± 0.30	-	-	32.00 ± 0.50	23.00 ± 0.40	6.00 ± 0.25	13
ER-33.00-10.00-4.70	33.00 ± 0.30	4.70 ± 0.10	10.00 ± 0.20	12.90 ± 0.20/-	25.00mi n	2.90 ± 0.10	-	6.50 ± 0.20	-	-	-	-	9
ER-33.00-24.00-30.00	33.00 ± 0.50	30.00 ± 0.20	24.00 ± 0.40	17.20 ± 0.35	25.50 ± 0.50	25.00 ± 0.20	21.00m ax	-	-	-	-	-	14
ER-36.00-24.00-10.90	36.00 ± 0.50	10.90 ± 0.20	24.00 ± 0.50	13.20 ± 0.20	22.00mi n	7.80 ± 0.15	31.20 ± 0.50	-	-	36.00 ± 0.50	24.00 ± 0.50	3.10 ± 0.20	3 + 4
ER-40.00-13.30-22.40	40.00 ± 0.70	22.40 ± 0.30	13.30 ± 0.30	13.30 ± 0.30	-	15.40 ± 0.30	29.00mi n	-	-	-	-	-	16
ER-42.00-14.00-7.25	42.00 ± 0.80	7.25 ± 0.15	14.00 ± 0.20/-	7.00 ± 0.20	34.80mi n	4.50 ± 0.15	-	-	-	-	-	-	15
ER-62.80-32.10-19.40	62.80 ± 0.80	19.40 ± 0.20	32.10 ± 0.30	21.60 ± 0.30	50.80 ± 0.80	12.80 ± 0.20	-	-	-	-	-	-	2



湖南创一电子科技股份有限公司  
CYGE ELECTRONIC TECHNOLOGY (HUNAN) CO.,LTD

规格 Type	磁芯参数					图号 Fig.
	C1(mm <sup>-1</sup> )	Le(mm)	Ae (mm <sup>2</sup> )	Ve (mm <sup>3</sup> )	Wt (g/set)	
ER-25.40-19.00-6.80	0.34	30.77	90.45	2783.14	14.51	3 + 5
ER-25.50-7.50-4.60	0.7	28.8	41.21	1186.73	6.18	1
ER-25.50-9.80-5.25	0.67	31.83	47.24	1503.59	8.92	1
ER-25.70-25.35-5.25	0.25	33	131.74	4347.6	22.5	11
ER-26.60-10.80-5.00	0.93	30.7	33	1013.1	8.7	8
ER-27.00-14.50-4.95	0.36	31.15	85.6	2666.93	14.56	1
ER-27.00-12.50-4.95	0.41	31	75.2	2331.2	12.22	1
ER-28.00-22.65-5.60	0.36	36.48	106.49	3884.76	22.1	12
ER-28.0-12.0-6.20	0.51	32.3	63.26	2043.48	10.47	1 + 3
ER-29.80-9.50-4.85	0.5	24.19	48.39	1170.35	10.32	2
ER-29.80-9.50-4.60	0.53	31.4	59.6	1871.44	10	4
ER-30.00-20.00-8.00	0.38	43.22	113.39	4900	28	4
ER-30.00-20.00-6.00	0.32	35.4	110	3894	22.1	1
ER-32.00-20.35-6.35	0.35	42.12	119.84	5048.29	26.6	4
ER-32.00-23.00-13.50	0.23	43.9	195	8561	51.8	13
ER-33.00-10.00-4.70	0.62	28.7	46.33	1329.4	10.26	9
ER-33.00-24.00-30.00	0.54	130.08	239.55	31160.7	149.1	14
ER-36.00-24.00-10.90	0.31	46.98	151.29	7107.78	38.43	3 + 4
ER-40.00-13.30-22.40	0.64	97.5	152	14820	40.06	16
ER-42.00-14.00-7.25	0.3	47.85	59.96	2869.32	11.1	15
ER-62.80-32.10-19.40	0.27	104.58	389.13	40696	222.6	2