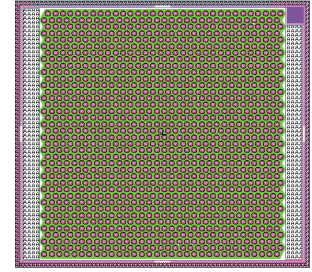


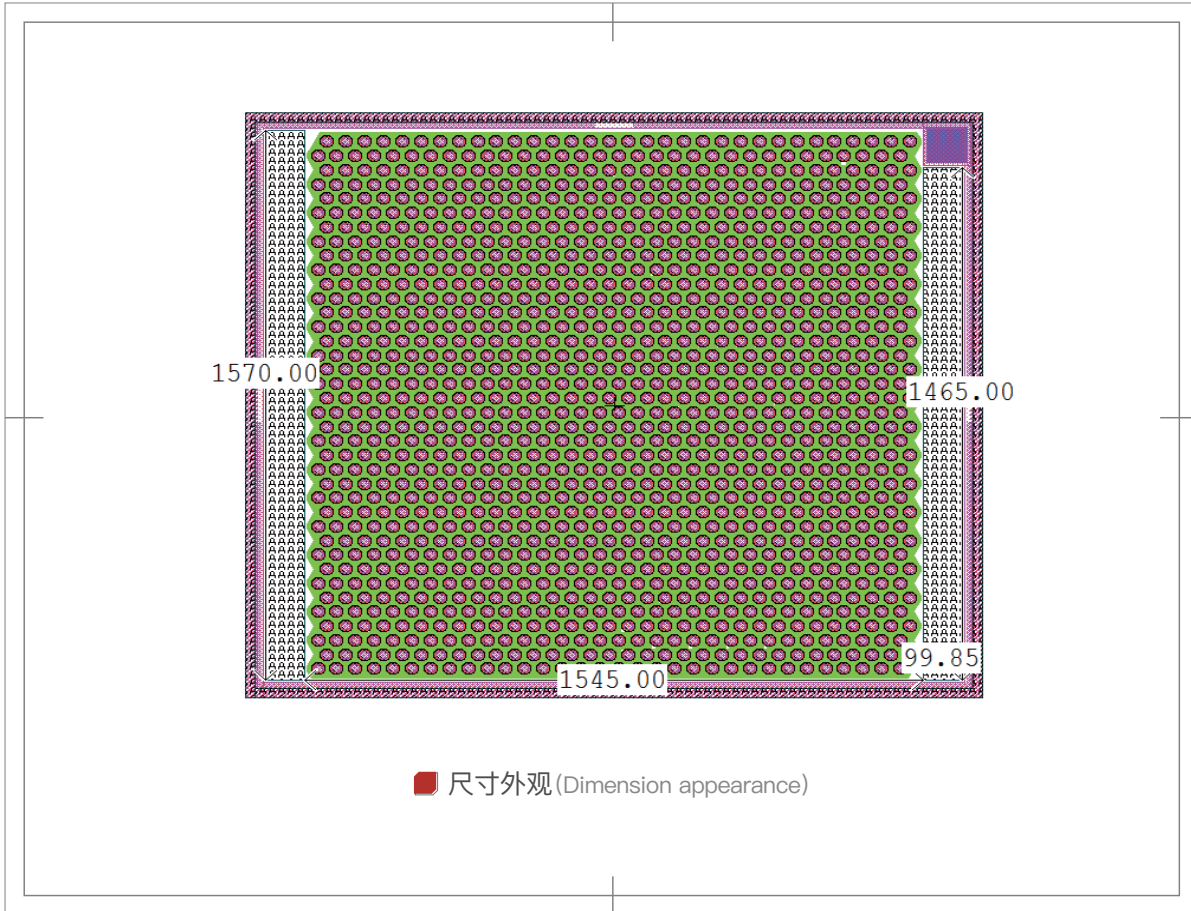
EB-VTOF-4-0850-06-001



| | 单位 Unit | 最小值 Min | 典型值 Typ | 最大值 Max |
|-------------------------------------|-----------------|---------|------------|---------|
| 光学性能 /Optical | | | | |
| 中心波长 (Center Wavelength) | nm | 844 | 850 | 856 |
| 输出功率 (Output Power) | W | 3 | 4.1 | 5 |
| 远场发散角 (Far Field Divergence Angle) | ° | 23 | 26 | 28 |
| 光谱宽度 (Spectral Width (FWHM)) | nm | / | 0.72 | 1.2 |
| 电学性能 /Electrical | | | | |
| 电光转换效率 (E-O Conversion Efficiency) | % | 37 | 39 | 42 |
| 斜率效率 (Slope Efficiency) | W/A | 0.8 | 1.0 | 1.1 |
| 阈值电流 (Threshold Current) | A | / | 1.3 | 1.4 |
| 工作电流 (Operating Current) | A | 4 | 5.3 | 6 |
| 工作电压 (Operating Voltage) | V | / | 2 | 2.2 |
| 几何尺寸 /Geometric Size | | | | |
| 发光点数量 (Emitter Number) | # | | 1216 | |
| 发光点排列方式 (Emitter Arrangement) | # | | 密排 / Dense | |
| 阵列尺寸 (Array size) | μm ² | | 1670*1844 | |
| 其他 /Others | | | | |
| 环保属性 (Environmental Attributes) | | | RoHS2.0 | |
| 测试温度 (Test Temperature) | °C | | 25 | |

备注 /Remarks

- 规格型号命名规则: EB (长光华芯缩写)-VTOFL (Vcsel TOF 缩写)-4(输出功率)-0850(中心波长)-06 (中心波长偏差)-001(结构号)
- 以上测试温度为 25 度
- 超过正常功率范围使用会缩短使用寿命
- 客户可定制波长、功率、孔径、间距等



产品特点 / Product Features



高可靠性
High Reliability



高可靠性
High Reliability



高效率
High Efficiency



大面阵
Large Area Array

应用领域 / Application Area



安防照明
Security Lighting



苏州长光华芯光电技术股份有限公司 SUZHOU EVERBRIGHT PHOTONICS CO., LTD
江苏省苏州市高新区科技城漓江路56号 No.56, Lijiang Road, SND, Suzhou, China
www.everbrightphotonics.com Sales@everbrightphotonics.com +86-512-66896988

声明：长光华芯为客户提供卓越的产品和优质的服务。我们可能更改规格和产品描述，届时将不另行通知。如需详细信息，请联系长光华芯销售代表。
Notice: Everbright keep improving its products to provide our customers with outstanding quality and reliability. We may change the specification and product description without notice at any time. For complete details, please contact Everbright sales representative.

