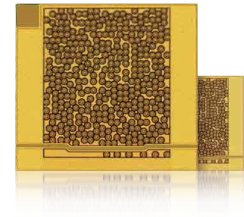


## 激光雷达与3D传感芯片—结构光VSL系列

### Lidar and 3D Sensing Laser Chip - Structured Light VSL Series



#### 光学性能 / Optical

中心波长/Center Wavelength	nm	934	942	946
输出功率/Output Power	W	/	1.6	1.8
远场发散角/Far Field Divergence Angle	°	20.2	21.2	22.2
光谱宽度/Spectral Width (FWHM)	nm	/	1.8	2.3

#### 电学性能 / Electrical

电光转换效率/E-O Conversion Efficiency	%	42.1	43.1	46.1
斜率效率/Slope Efficiency	W/A	0.8	0.95	1.1
阈值电流/Threshold Current	A	/	0.18	0.28
工作电流/Operating Current	A	/	1.8	2
工作电压/Operating Voltage	V	/	2.0	2.4

#### 几何尺寸 / Geometric Size

发光点数量/Emitter Number	#		377	
发光点排列方式/Emitter Arrangement	#		随机 / Random	
阵列尺寸/Array size	$\mu\text{m}^2$		798*741	

#### 其他 / Others

环保属性/Environmental Attributes			Rohs2.0	
测试温度/Test Temperature	°C		50	

#### 产品特点 / Product Features



高可靠性  
High Reliability



6结  
6 junctions



低发散角  
Low Divergence Angle

#### 应用领域 / Application Area



手势识别  
Gesture Recognition



人脸识别  
Face Recognition



苏州长光华芯光电技术股份有限公司 SUZHOU EVERBRIGHT PHOTONICS CO., LTD  
 江苏省苏州市高新区科技城漓江路56号 No.56, Lijiang Road, SND, Suzhou, China  
[www.everbrightphotonics.com](http://www.everbrightphotonics.com) [Sales@everbrightphotonics.com](mailto:Sales@everbrightphotonics.com) +86-512-66896988

声明：长光华芯为客户提供卓越的产品和优质的服务。我们可能更改规格和产品描述，届时将不另行通知。如需详细信息，请联系长光华芯销售代表。  
 Notice: Everbright keep improving its products to provide our customers with outstanding quality and reliability. We may change the specification and product description without notice at any time. For complete details, please contact Everbright sales representative.

