

## 阵列 - MCP 系列

### Stack-MCP Series



	单位 Unit	EB-MCP-V#-060- ####-0808-10	EB-MCP-V#-100- ####-0808-10	EB-MCP-V#-300Q- ####-0808-05
<b>光学性能 /Optical</b>				
中心波长 /Center Wavelength	nm	808		808
中心波长偏差 /Wavelength Tolerance	nm	±10		±5
输出功率 /Output Power	W	60	100	300
Bar 条数 /Number of Bars	#	2 ~ 60		2 ~ 60
光谱宽度 /Spectral Width (FWHM)	nm	≤8		4
工作模式 /Operating Mode	#	CW		QCW
快轴发散角 /Fast-axis Divergence	Deg	40		
慢轴发散角 /Slow-axis Divergence	Deg	10		
波长温度系数 /Wavelength Temperature Coefficient	nm/°C	0.28		
<b>电学性能 /Electrical</b>				
光电转换效率 /Power Conversion Efficiency	%	50		
斜率效率 /Slope Efficiency/Bar	W/A	≥1.1		1.1
阈值电流 /Threshold Current	A	25	26	28
工作电流 /Operating Current	A	60	105	290
工作电压 /Operating Voltage/Bar	V	≤2		2
<b>热学性能 /Thermal</b>				
工作温度 /Operating Temperature	°C	15 ~ 35		25
水流速度 /Bar/Water Velocity/Bar	l/m	0.3~0.5		0.3
存储温度 /Storage Temperature	°C	0~55		
最大入口压力 /Entrance Maximum Pressure	psi	55		
水类型 /Water Type	-	DI Water		
离子水 (DI) 电阻率 /Deionized Water Resistivity (DI)	kΩ · cm	200~500		
纯水过滤器颗粒 /Pure Water Filter Particles	μm	<20		

#### 备注 /Remarks

- 1.Explanation of Item Number: EB (Everbright In Short) - MCP (Micro-Channel Cooled Package)-V # (Number of bars per stack) - 300Q (QCW Output Power is 300W/bar) - #### (Total Output Power) - 0808 (Center Wavelength) -03(Wavelength Tolerance)
- 2.Above Data Test at 25°C, Unless otherwise stated.
- 3.Please avoid operation and storage in the condensation enviroment. If exceed operating temperature, the device lifetime will be inpacted.
4. Lifetime reduced if exceed nominal output power.

### 应用领域 / Application Area



科研  
R&D



生物医学  
Biomedical



工业泵浦  
Industrial Pump

### 产品特点 / Product Features



高性价比  
Cost Effective



高可靠性  
High Reliability



高效率  
High Efficiency



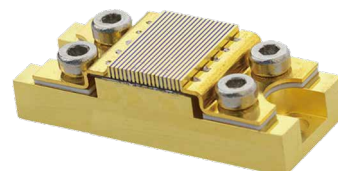
长寿命  
Long Lifetime



苏州长光华芯光电技术股份有限公司 SUZHOU EVERBRIGHT PHOTONICS CO., LTD  
江苏省苏州市高新区科技城漓江路56号 No.56, Lijiang Road, SND, Suzhou, China  
[www.everbrightphotonics.com](http://www.everbrightphotonics.com) [Sales@everbrightphotonics.com](mailto:Sales@everbrightphotonics.com) +86-512-66896988

声明：长光华芯为客户提供卓越的产品和优质的服务，我们可能更改规格和产品描述，届时将不另行通知。如需详细信息，请联系长光华芯销售代表。  
Notice: Everbright keep improving its products to provide our customers with outstanding quality and reliability. We may change the specification and product description without notice at any time. For complete details, please contact Everbright sales representative.

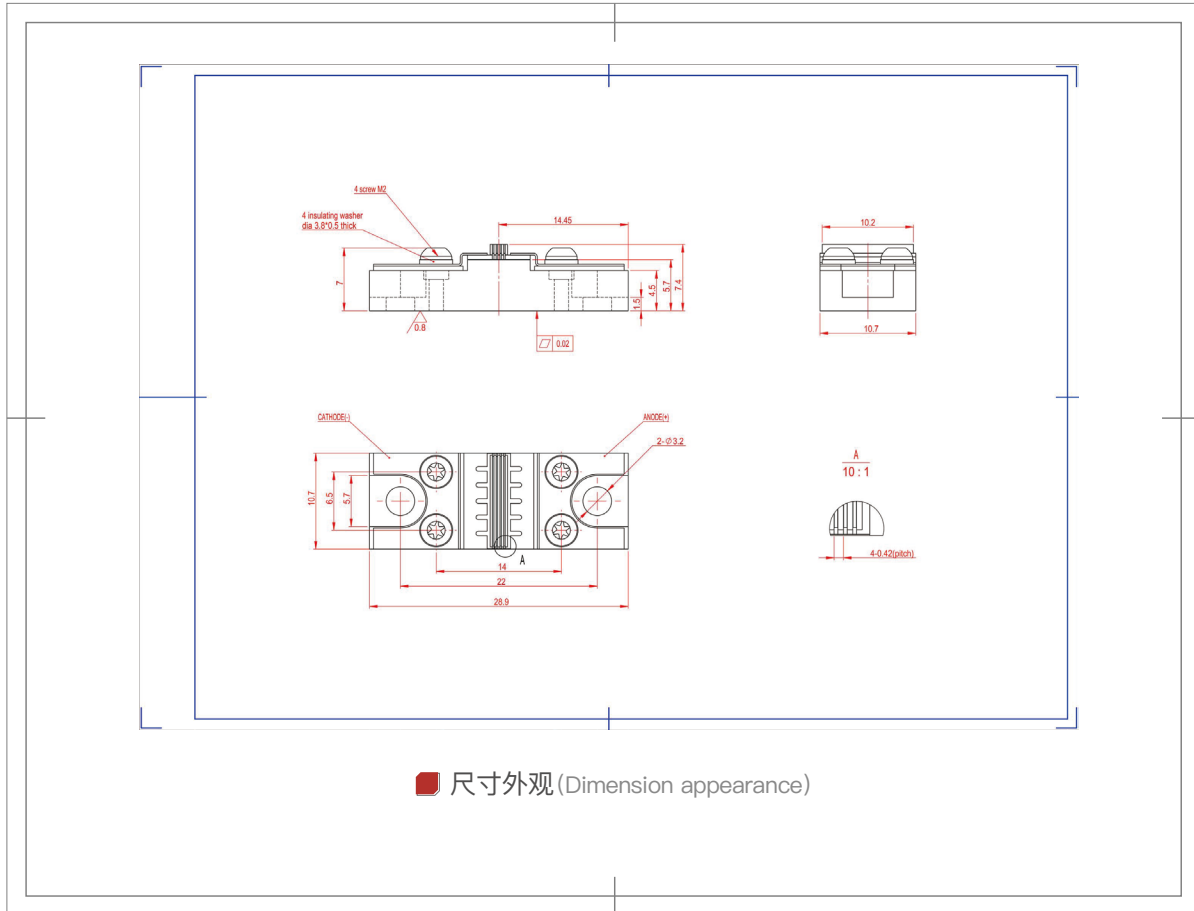


	单位 Unit	最小值 Min	典型值 Typ	最大值 Max
<b>光学性能 /Optical</b>				
中心波长 /Center Wavelength	nm	805	808	811
中心波长偏差 /Wavelength Tolerance	W		±5	
输出功率 /BarOutput Power/Bar	%		300	
Bar 条数 /Number of Bars	%		2 ~ 24	
总输出功率 /Total Output Power	μm		-	
Bar 条间距 /Bar-to-Bar Spacing	-		0.4 ~ 1.8	
光谱宽度 /Spectral Width (FWHM)	-		4	6
脉冲宽度 /Pulse Width	m		50-500	
重复频率 /Repetition Rate			1-200	
快轴发散角 (FWHM) /Fast-axis Divergence (FWHM)	nm		40	
慢轴发散角 (FWHM) /Slow-axis Divergence (FWHM)	mW		10	
波长温度系数 /Wavelength Temperature Coefficient			0.28	
<b>电学性能 /Electrical</b>				
光电转换效率 /Power Conversion Efficiency	%	48	50	
斜率效率 /Slope Efficiency/Bar	W/A		1.1	1.2
阈值电流 /Threshold Current	A		20	25
工作电流 /Operating Current	A	290	300	
工作电压 /Operating Voltage/Bar	V		2	
<b>热学性能 /Thermal</b>				
水类型 /Water Type	-		Pure Water	
工作温度 /Operating Temperature	°C		25	
存储温度 /Storage Temperature	°C		-40-85	

**备注 /Remarks**

- 1.Explanation of Item Number: EB (Everbright In Short) - QCP (Conduction-Cooled Package)-V # (Number of bars per stack) - 300Q (QCW Output Power is 300W/bar) - ####Q (Total QCW Output Power) - 0808 (Center Wavelength) -05(Wavelength Tolerance)
- 2.Above Data Test at 25°C, Unless otherwise stated.
- 3.Please avoid operation and storage in the condensation enviroment. If exceed operating temperature, the device lifetime will be inpacted.
4. Lifetime reduced if exceed nominal output power.



尺寸外观 (Dimension appearance)

应用领域 / Application Area



科研  
R&D



生物医学  
Biomedical



工业泵浦  
Industrial Pump

产品特点 / Product Features



高性价比  
Cost Effective



高可靠性  
High Reliability



金锡焊料  
Ausn Hard Solder



高效率  
High Efficiency



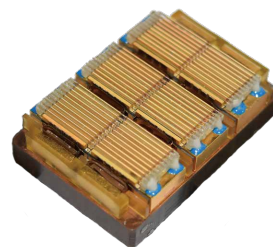
长寿命  
Long Lifetime



苏州长光华芯光电技术股份有限公司 SUZHOU EVERBRIGHT PHOTONICS CO., LTD  
江苏省苏州市高新区科技城漓江路56号 No.56, Lijiang Road, SND, Suzhou, China  
www.everbrightphotonics.com Sales@everbrightphotonics.com +86-512-66896988

声明: 长光华芯为客户提供卓越的产品和优质的服务, 我们可能更改规格和产品描述, 届时将不另行通知。如需详细信息, 请联系长光华芯销售代表。  
Notice: Everbright keep improving its products to provide our customers with outstanding quality and reliability. We may change the specification and product description without notice at any time. For complete details, please contact Everbright sales representative.

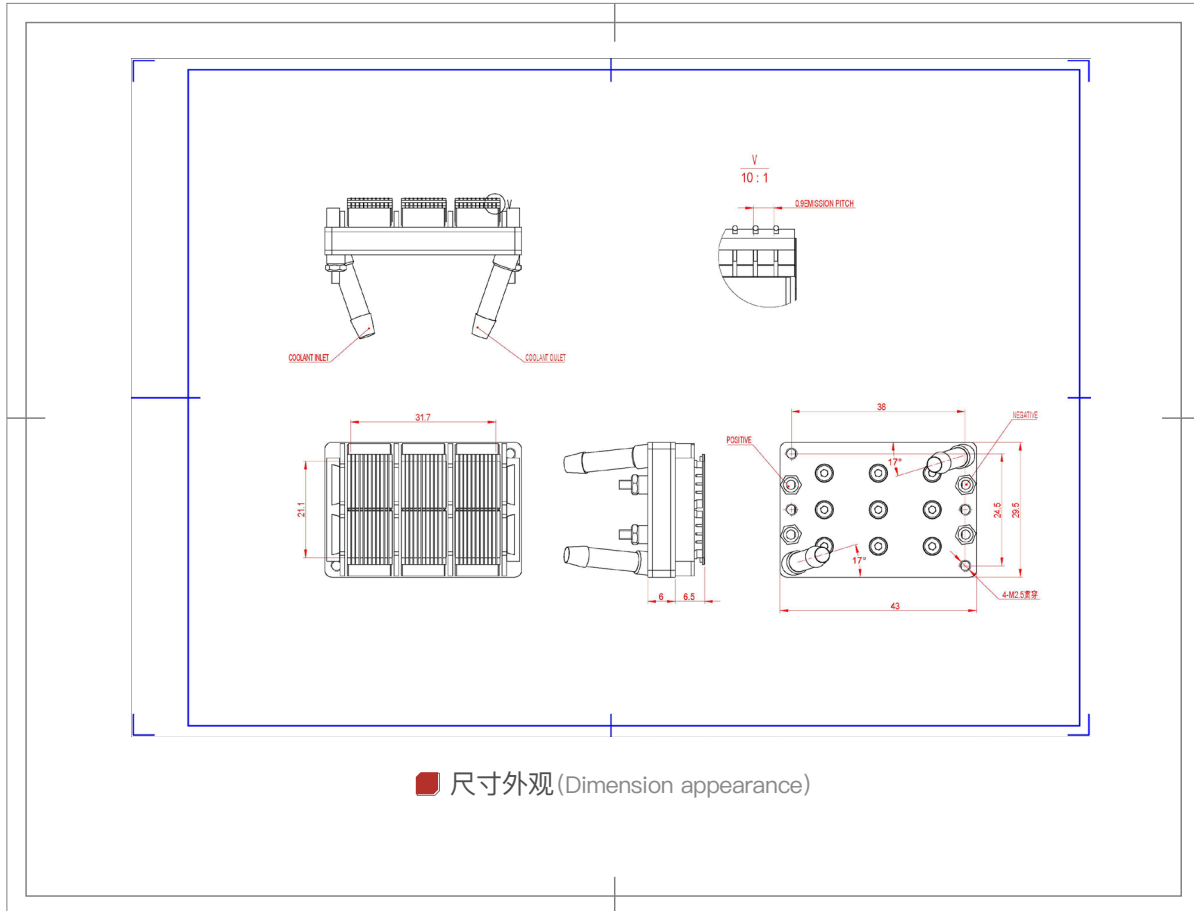


	单位 Unit	最小值 Min	典型值 Typ	最大值 Max
<b>光学性能 /Optical</b>				
中心波长 /Center Wavelength	nm	798	808	818
中心波长偏差 /Wavelength Tolerance	W		±10	
输出功率 /BarOutput Power/Bar	%		40	
Bar 条数 /Number of Bars	%		60	
总输出功率 /Total Output Power	μm		2400	
Bar 条间距 /Bar-to-Bar Spacing	-		0.9	
光谱宽度 /Spectral Width (FWHM)	-	6	8	10
脉冲宽度 /Pulse Width	m		10-100	
重复频率 /Repetition Rate			1-10	
快轴发散角 (FWHM) /Fast-axis Divergence (FWHM)	nm		40	
慢轴发散角 (FWHM) /Slow-axis Divergence (FWHM)	mW		10	
波长温度系数 /Wavelength Temperature Coefficient			0.28	
<b>电学性能 /Electrical</b>				
光电转换效率 /Power Conversion Efficiency	%	48	50	
斜率效率 /Slope Efficiency/Bar	W/A		1.1	
阈值电流 /Threshold Current	A		10	
工作电流 /Operating Current	A		50	
工作电压 /Operating Voltage/Bar	V		1.8	2
<b>热学性能 /Thermal</b>				
水类型 /Water Type	-		Pure Water	
工作温度 /Operating Temperature	°C	15	25	
存储温度 /Storage Temperature	°C		-40-85	

**备注 /Remarks**

- 1.Explanation of Item Number: EB (Everbright In Short) - QCP (Conduction-Cooled Package)-V # (Number of bars per stack) - 2400Q(QCW Output Power)- 0808(Center Wavelength )-10(Wavelength Tolerance)
- 2.Above Data Test at 25°C, Unless otherwise stated.
- 3.Please avoid operation and storage in the condensation enviroment. If exceed operating temperature, the device lifetime will be inpacted.
4. Lifetime reduced if exceed nominal output power.



尺寸外观 (Dimension appearance)

应用领域 / Application Area



科研  
R&D



生物医学  
Biomedical



工业泵浦  
Industrial Pump

产品特点 / Product Features



高性价比  
Cost Effective



高可靠性  
High Reliability



金锡焊料  
Ausn Hard Solder



高效率  
High Efficiency



长寿命  
Long Lifetime



苏州长光华芯光电技术股份有限公司 SUZHOU EVERBRIGHT PHOTONICS CO., LTD  
江苏省苏州市高新区科技城漓江路56号 No.56, Lijiang Road, SND, Suzhou, China  
www.everbrightphotonics.com Sales@everbrightphotonics.com +86-512-66896988

声明：长光华芯为客户提供卓越的产品和优质的服务。我们可能更改规格和产品描述，届时将不另行通知。如需详细信息，请联系长光华芯销售代表。  
Notice: Everbright keep improving its products to provide our customers with outstanding quality and reliability. We may change the specification and product description without notice at any time. For complete details, please contact Everbright sales representative.



