

乘风破浪



# CORPORATE CULTURE

## 企业文化

企业使命：勇立制造前沿 共创美好生活

企业愿景：缔造世界一流制造企业

成就鼎润百年国际品牌

企业精神：诚信 严谨 高效 共享

经营理念：企业成功在客户心中 企业发展在员工手中

发展理念：绿色发展 循环发展 低碳发展

企业价值观：务实担当 协作奋进 以人为本 追求卓越



## 企业简介

河北鼎润智能装备制造有限公司成立于2017年，位于河北省邯郸市武安市工业园区泉上大道，是一家集铸件及加工为一体的新型民营企业，总投资12.4亿人民币，占地面积500余亩，总建筑面积18.8万平方米，分北区和南区，北区为铸造部，南区为智能装备部。企业员工1500余人，其中技术人员50人，高级工程师15人，均具有二十年以上的专业技术能力。

公司在借鉴央企兵工企业管理模式的基础上，根据企业实际发展进行改进，建立了完善的管理制度，最终形成一套属于自己的经营管理模式，进一步规范了员工的行为标准，提升安全生产理念，进而高效率、高质量、高标准完成工作使命。

公司在2019年被列为河北省重点项目、邯郸市五大重点项目之一，此外先后荣获河北铸造协会颁发的河北省绿色铸造示范企业，最佳质量奖等荣誉称号。

北区铸造部建筑面积5万平方米，分为四个生产部门：

一、制造一部：为呋喃树脂自硬砂型生产线，搭配先进的生产设备、检测仪器及全面的环保设施，每年可为客户提供大、中、小型优质铸件2万吨；

二、制造二部：拥有2条丹麦进口的迪砂垂直生产线，其最大的优势为：高效率、高品质、高环保，能充分满足高铁类、汽车类、电器类等小型大批量的精密铸件需求。

三、制造三部：真空壳型浇注线，采用无机粘接剂温芯盒壳模制芯工艺，无烟、无毒、无味，完全顺应国家环保要求，可生产铸钢件、灰铸铁、球铁件、有色金属等各种材质产品。

四、机加工部：拥有各类型加工机床，从小型加工中心、钻床到大型龙门、落地镗床，形成了全方位的加工能力，全面满足客户的加工需求。

从铸造到加工，我公司北区可以为客户提供一站式服务，保证客户产品质量，提高客户效率。

南区智能装备部为公司三期工程，建筑面积13.8万平方米，为客户提供高端精加工及智能产品研发制造等服务。

展望未来，公司将积极响应国家节能减排、绿色发展号召，顺应市场发展的趋势，结合当地经济发展规划，积极探索转型升级之路，力争用三年时间打造成河北乃至全国智能装备铸造的行业标兵，为建设经济繁荣、美丽富饶的新武安贡献力量。



## Company profile

Hebei dingrun Intelligent Equipment Manufacturing Co., Ltd., established in 2017, is located in Quanshang Avenue, Wu'an Industrial Park, Handan City, Hebei Province. It is a new type of private enterprise integrating casting and processing, with a total investment of 1.24 billion yuan, covering an area of more than 500 mu, and a total construction area of 188000 square meters. It is divided into North and south areas, with the casting department in the north and intelligent equipment department in the south. The company has more than 1500 employees, including 50 technicians and 15 senior engineers. All of them have more than 20 years' professional and technical ability.

On the basis of learning from the management mode of the Central Military enterprise, the company improved according to the actual development of the enterprise, established a perfect management system, and finally formed a set of its own business management mode, further standardizing the behavior standard of employees, improving the concept of safety production, and then completing the mission with high efficiency, high quality and high standard.

In 2019, the company was listed as one of the key projects in Hebei Province and one of the five key projects in Handan city. In addition, the company has won the honorary titles of Green Foundry demonstration enterprise and best quality award issued by Hebei Casting Association.

The casting department in the north area covers an area of 50000 square meters, which is divided into four production departments

1、Manufacturing department 1: furfural resin self hardening sand mold production line, equipped with advanced production equipment, testing instruments and comprehensive environmental protection facilities, can provide customers with 20000 tons of large, medium and small high-quality castings every year;

2、Manufacturing department 2: it has two vertical production lines imported from Denmark. Its biggest advantages are high efficiency, high quality and high environmental protection, which can fully meet the needs of small and large quantities of precision castings such as high-speed rail, automobile and electrical appliances.

3、Manufacturing department 3: vacuum shell casting line, using inorganic adhesive warm core box shell mold core technology, smokeless, non-toxic, tasteless, fully comply with the national environmental protection requirements, can produce steel castings, gray cast iron, ductile iron, non-ferrous metal and other materials products.

4、Machining department: we have all kinds of machine tools, from small machining center, drilling machine to large gantry, floor boring machine, forming a full range of processing capacity to fully meet the processing needs of customers.

From casting to processing, our company can provide one-stop service for customers to ensure the quality of products and improve the efficiency of customers.

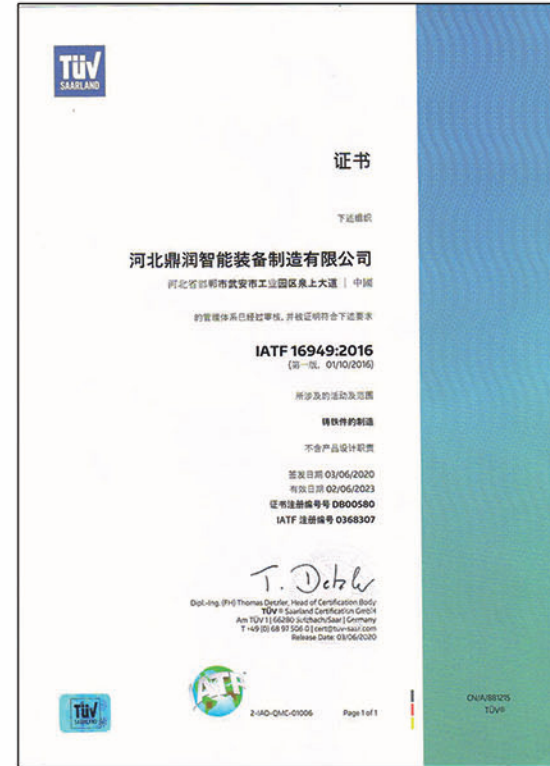
The southern intelligent equipment department is the third phase project of the company, with a construction area of 138000 square meters, providing customers with high-end precision processing and intelligent product R & D and manufacturing services.

Looking forward to the future, the company will actively respond to the call of national energy conservation and emission reduction and green development, comply with the trend of market development, actively explore the road of transformation and upgrading in combination with local economic development planning, and strive to become the industry model of intelligent equipment casting in Hebei and even the whole country in three years, and contribute to the construction of economic prosperity, beautiful and rich new Wu'an.



# 质量管理体系认证证书

QUALIFICATION MANAGEMENT SYSTEM CERTIFICATION



# 河北鼎润智能装备制造有限公司

HEBEI DINGRUN INTELLIGENT EQUIPMENT MANUFACTURE CO., LTD.

# 专利证书

PATENT CERTIFICATION



一种吊钩式抛丸清理机



一种回收式单机除尘器



一种脉冲布袋除尘器



一种热处理炉



一种树脂砂浇注除尘及净化装置



一种移动式双臂混砂机



一种自动称配料装置



# 公司环境

COMPANY  
ENVIRONMENT



河北鼎润智能装备制造有限公司  
HEBEI DINGRUN INTELLIGENT EQUIPMENT MANUFACTURE CO., LTD.



河北鼎润智能装备制造有限公司本着“以人为本，绿色发展的理念，在注重产品质量的同时，关注员工建设，配置高标准的带独立卫生间的员工宿舍、中央空调、干净整洁的就餐环境、提供业余生活的员工活动室、党建活动室等，让员工在优美的环境中预约工作、生活，做企业的主人。

Hebei Dingrun Intelligent Equipment Manufacture Co., Ltd adheres to the concept of "people-oriented and green development", while paying attention to ensure the high quality of the product, it also attaches importance on the construction of staff facilities, it provides employees with high standard staff dormitory with independent toilet and spacious and clean public bathroom, central air conditioning system to ensure the employees work warm in winter and cool in summer, clean and hygienic dining environment, and activity room on spare time and Party building activity room, etc. Dingrun is committed to make the employees work and live in a beautiful environment and to be the master of the enterprise.

## 厂内环境

FACTORY  
ENVIRONMENT





## 制造一部

Manufacturing department I

呋喃树脂自硬砂型生产线，采用2套8T新研中频电炉，2套5T美国应达中频电炉。大功率电机全部采用变频技术，对于电炉除尘、砂再生除尘、浇注除尘去味、喷漆除尘去味等设备，抽风量大于3万立方的电机，全部实现了变频控制。此外，引进了国际先进FARO激光扫描仪，提供铸造全过程的尺寸精度保证。检测精度达到0.005mm，可以实现对大型工件的扫描检测，以及对模具、砂型、砂芯、铸件成品全过程进行扫描检测。同时，扫描数据与标准3D数据进行对照，可以获得检测对象完整的精度报告，保证最终铸件尺寸精度。



The furfural resin self hardening sand mold production line adopts two sets of 8t medium frequency electric furnaces and two sets of 5t medium frequency electric furnaces that should be used in the United States. All high-power motors adopt frequency conversion technology. For electric furnace dust removal, sand regeneration dust removal, pouring dust removal, spray paint dust removal and other equipment, the motor with air volume greater than 30000 cubic meters has realized frequency conversion control. In addition, the international advanced Faro laser scanner is introduced to guarantee the dimensional accuracy of the whole casting process. The detection accuracy is 0.005mm, which can realize the scanning detection of large workpieces and the whole process of mold, sand mold, sand core and casting products. At the same time, by comparing the scanning data with the standard 3D data, a complete precision report of the tested object can be obtained, which ensures the dimensional accuracy of the final casting.



# Production process

## 生产工艺

### 1 自硬树脂砂合箱工部

开创性的引入平车浇注冷却线，采用移动式抽风罩收集并用催化燃烧技术处理尾气



### 2 熔炼浇注工部

全自动的行车称配料系统、铁合金自动称配料和加料系统电炉配置了旋风式除尘器。集中浇注集中抽风搜集风尘，对浇注的烟气进行回收处理，并采用催化燃烧技术，清除呋喃树脂燃烧后产生的异味。



### 3 打磨清理工部

自硬砂工艺生产的铸件清理采用封闭式打磨清理房配合的工艺，全部配置除尘设备。





## 制造二部

Manufacturing department II

创 优 秀 品 牌  
铸 一 流 企 业



振鼓设备

Vibrating drum equipment

此车间有二条丹麦进口全自动生产线，主要生产高铁配件、汽车配件、工程机械配件，生产能力可达到350箱/小时。

The workshop has two fully automatic production lines imported from Denmark, mainly producing high-speed rail accessories, auto parts and construction machinery accessories, with a production capacity of 350 cases / h.



C3造型机

垂直造型机设备为丹麦原装进口，主要功能将砂调配好，通过造型机在变成砂型，最高节拍每小时可达到550型，造型精准度达到0.1mm

The vertical molding machine is imported from Denmark. The main function of the vertical molding machine is to mix sand well. Through the molding machine, the maximum beat can reach 550 types per hour, and the modeling accuracy can reach 0.1 mm

振鼓设备：产品冷却使用美国Gk公司生产的振鼓设备，价值4000多万，该震动技术连续的将铸件和砂子分离，使旧砂得到快速冷却处理，对产品无磕碰伤，保证产品光滑度，大大提高成品合格率。

Vibration drum equipment: the vibration drum equipment produced by GK company of the United States is used for product cooling, with a value of more than 40 million. The vibration technology continuously separates the casting from the sand, so that the used sand can be quickly cooled, without bumping and bumping on the product, ensuring the smoothness of the product and greatly improving the qualified rate of the finished product.



可视浇注机

Visual casting machine

采用美国应达公司可视浇注系统，操作简单，激光与显示屏，在线检测铁水液面，实现自动浇注，可为垂直造型线提供稳定的浇注。

The visual gating system of American Yingda company is adopted, which is easy to operate. The laser and display screen can detect the liquid level of hot metal on line and realize automatic pouring. It can provide stable pouring for vertical molding line.



## 制造二部先进设备

Manufacturing department II Advanced Equipment



### 铁水转运

Hot metal transfer

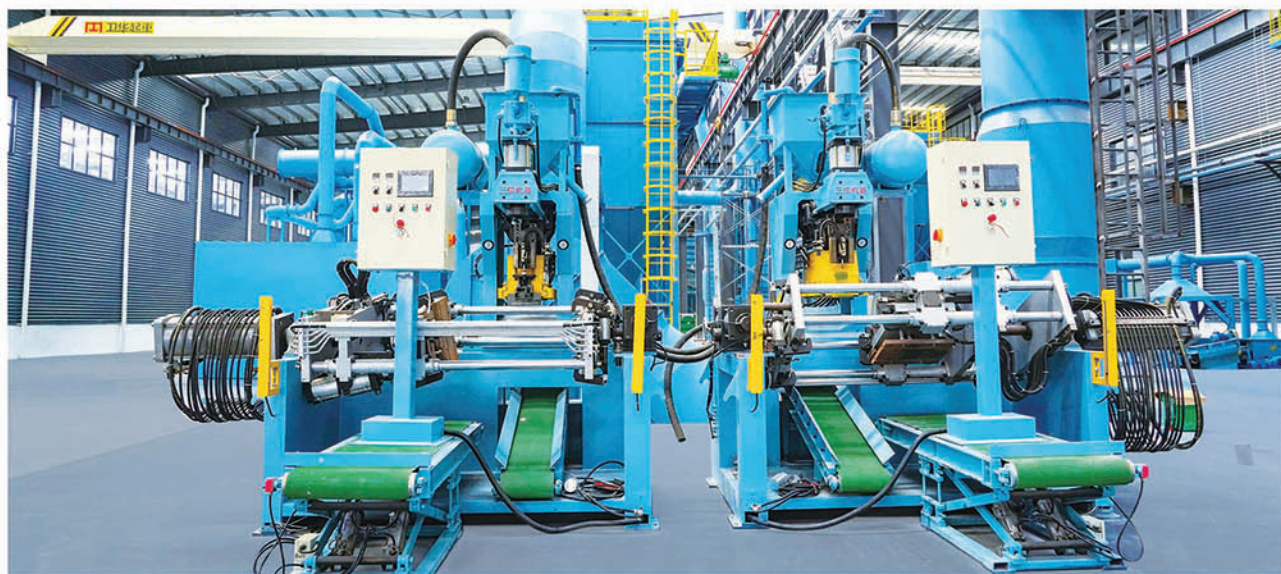
铁水转运设备为空中转运、采用德国技术，具有安全性能高，稳定可靠的特点。

The hot metal transfer equipment is air transport, using German technology, with high safety performance, stable and reliable characteristics.



### 制芯机

Core making machine



砂处理设备、除尘风机和脉冲布袋除尘：采用丹麦迪砂先进技术可以实现在线混砂系全自动计算加入水分，砂型重复率超过98%，混砂机带自动检测功能，保证型砂质量，车间所有除尘都是集中处理。

Sand treatment equipment, dust removal fan and pulse bag dedusting: adopting Danish DESAR advanced technology, it can automatically calculate and add water in the on-line sand mixing system, and the sand mold repetition rate exceeds 98%. The sand mixer has automatic detection function to ensure the quality of molding sand, and all dust removal in the workshop is centralized.



### 砂处理封闭式系统

Closed sand treatment system



### 除尘风机

Dust Blower



### 脉冲布袋除尘

Pulse cloth bag dust removal



### 气罐发送

Tank launch



## 制造三部

Manufacturing department III

真空壳型浇注线，采用无机粘接剂温芯盒壳模制芯工艺，无烟、无毒、无味，完全顺应国家环保要求，可生产铸钢件、灰铸铁、球铁件、有色金属等各种材质产品。

The vacuum shell casting line adopts the core making technology of inorganic adhesive warm core box shell. It is smoke-free, non-toxic and tasteless. It can produce steel castings, gray cast iron, nodular iron castings, non-ferrous metals and other materials.



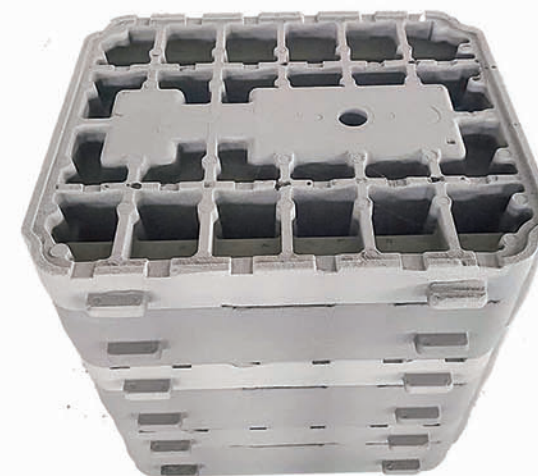
**壳型制芯机**  
 Shell Core Making Machine

**壳型线**  
 Shell profile



## 壳型工艺产品

Shell shaped products





## 机加工部

machining department

机加工车间建筑面积15750平方米，是铸造的延伸，主要设备有卧式车床、摇臂钻床、数控双边铣床、数控对头镗床、数控锯床及8米重型数控龙门铣等，生产模式和工艺水平立足高起点、高水平，加工设备齐全，加工速度快、精度高，和铸造车间形成一体化，为客户提供更全面的服

The construction area of machining workshop is 15750 square meters, which is the extension of casting. The main equipment includes horizontal lathe, radial drilling machine, CNC bilateral milling machine, CNC boring machine, CNC sawing machine and 8-meter Heavy CNC gantry milling machine. The production mode and process level are based on high starting point and high level. The processing equipment is complete, the processing speed is fast and the precision is high. It forms an integration with the casting workshop to serve customers Provide more comprehensive services.



加工车芯撑

Core brace for machine tool



加工变速箱体

Machining gearbox



测量工件

Measuring work piece



工件钻孔

Workpiece drilling



110数控铣镗床

110 CNC milling and boring machine



2560数控龙门镗铣床

2560 CNC gantry boring and milling machine



海克斯康三坐标检测仪器

Hexagon CMM instrument



2580数控龙门镗铣床

2580 CNC gantry boring and milling machine



## 装配部

Assembly department

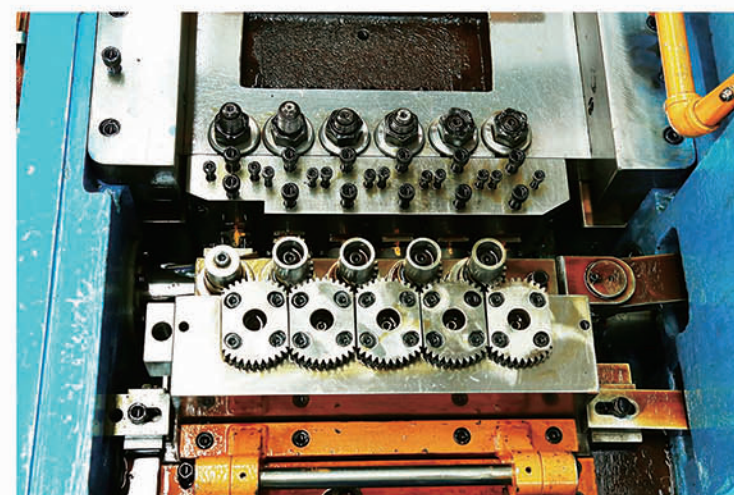
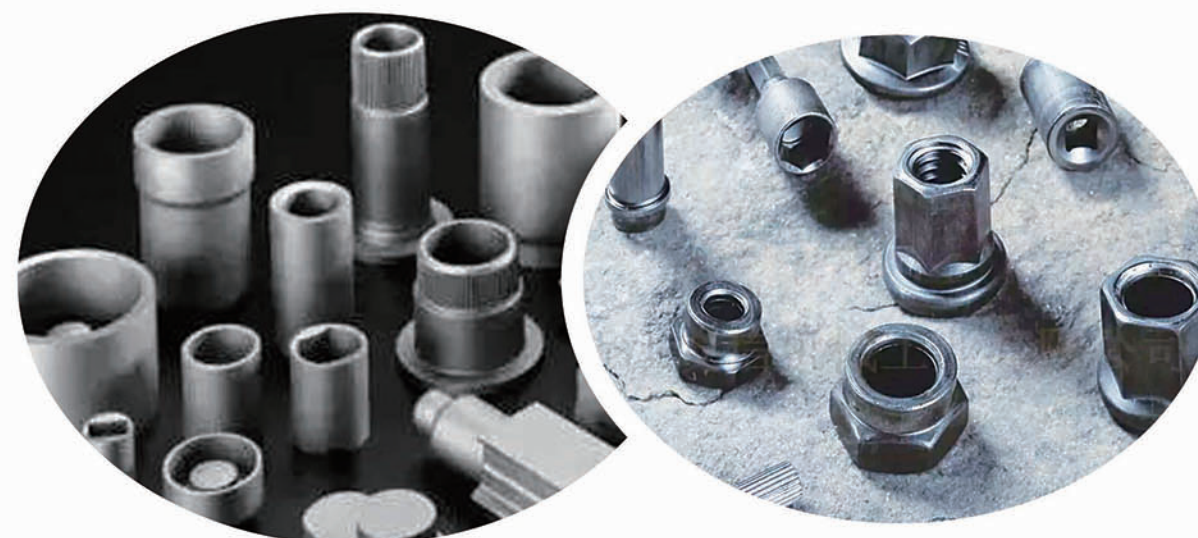


### 科睿尼尔冷镦机

Coreanil cold heading machine

科睿尼尔冷镦机是一种生产效率高，生产范围较大，适应于变形复杂，集镦锻、挤压、切边于一体的成型机。我们从不忽视任何一个细微环节，立志取得每个零部件的加工精度、工艺流程都在我们有效的生产控制范围内。无限制提高用户的附加价值是我们永恒追求的目标，公司一直致力于为用户提供高效益、高品质、性价比最优的机械设备，帮助用户不断提高生产效率、降低成本，最终增强用户的市场竞争能力。快速、细致周全的售前售后服务，是我们不断满足并超载客户需求的有力保障，一切为了用户。

Corey Neal cold heading machine is a kind of forming machine with high production efficiency and large production range, which is suitable for complex deformation, including upsetting, extrusion and edge cutting. We never ignore any subtle link, determined to achieve the processing accuracy of each part, process flow is within our effective production control range. Unlimited increase in the added value of users is our eternal goal. The company has been committed to providing users with high-efficiency, high-quality, cost-effective machinery and equipment to help users continuously improve production efficiency, reduce costs, and ultimately enhance the market competitiveness of users. Fast, meticulous and comprehensive pre-sale and after-sales service is a powerful guarantee for us to meet and overload the needs of customers, all for the sake of users.

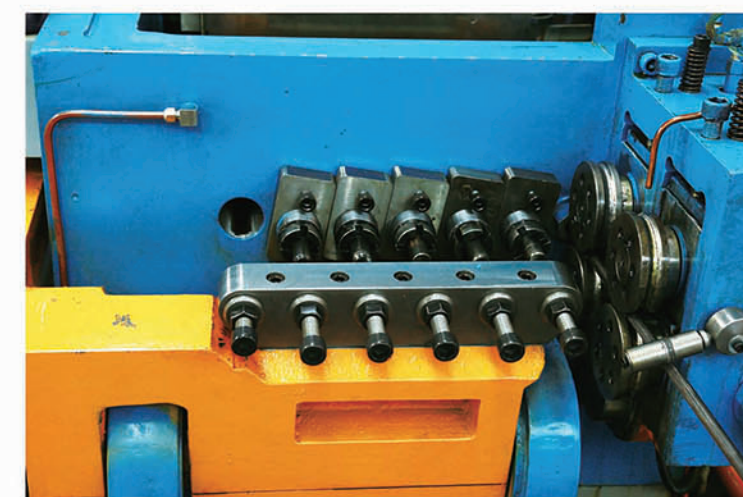


采用进口铝制合金材质机械手夹料且气动抬起机构，使夹料稳定可靠。

The imported aluminum alloy manipulator is used to clamp the material and the pneumatic lifting mechanism makes the clamping stable and reliable.

气动式夹料，可快速调整夹料中心度，操作简便、稳定，可任意更改翻转式夹料机构。

Pneumatic clamping can quickly adjust the clamping centrality, and the operation is simple and stable. It can change the overturning clamping mechanism arbitrarily.





## 环保设备

Environmental protection equipment



### 电炉除尘系统

Electric Furnace Dust  
Collection System



### 熔炼浇注除尘净化系统

Dust Removal and Purification System for  
Melting and Casting



### 砂处理除尘系统

Dust removal system for  
sand treatment



为了守护一片蓝天，我们投入大量资金，完善并升级环保装备，

实现从原料到产品的全流程环保治理。

### 脉冲布袋除尘系统

Pulse cloth bag dust removal system



### 脉冲布袋除尘系统

Pulse cloth bag dust removal system



### VOCs除尘系统

Vocs dedusting system



### VOCs除尘系统

Vocs dedusting system



## 检测与化验设备

Testing and laboratory equipment



### 化验设备

Laboratory equipment



1. 屏显式万能试验机  
Screen display universal testing machine

3. 布氏硬度计  
Brinell hardness tester

5. 高频红外碳硫分析仪  
High Frequency Infrared Carbon and Sulphur Analyser

7. 金相显微镜  
Metallographic Microscope

9. 抛光机  
polishing machine

11. 吊钩称  
Hook scale

2. 便携式测温计  
Portable thermometer

4. faro三维激光扫描仪  
Faro three-dimensional laser scanner

6. 光谱仪  
spectrometer

8. 里氏硬度计  
Riesler hardness tester

10. 热分析仪  
Thermal analyzer





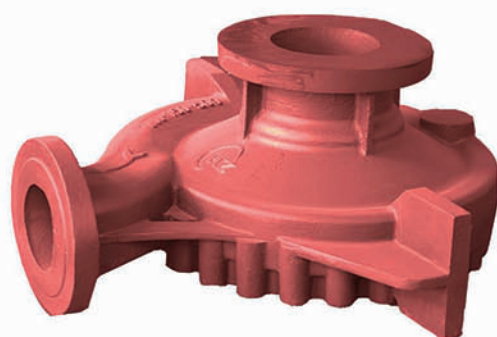
## Green products

### 绿色产品



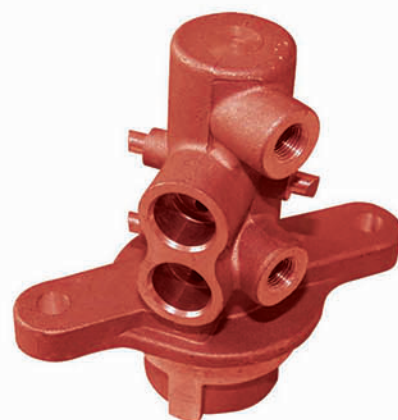
泵 体

Pump Body



泵 体

Pump Body



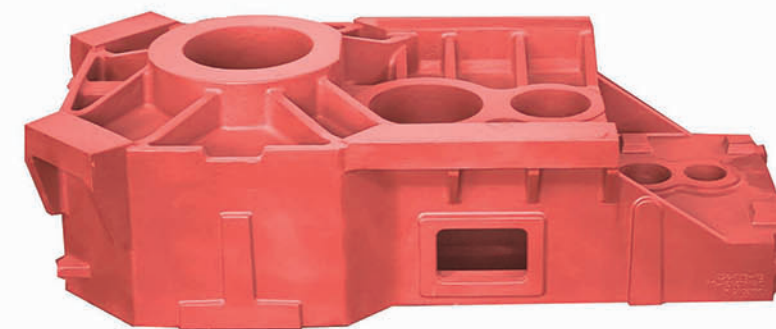
汽车配件铸件

Auto Parts Casting



端 盖

End Cap



变速箱盖

Transmission cover



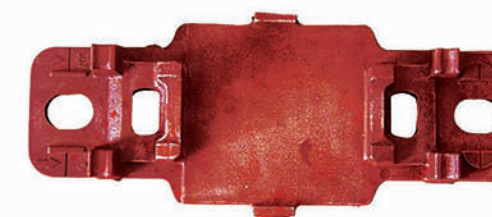
大型龙门铣横梁24t重

24t weight of large Gantry Milling Crossbeam



高铁垫板

High-speed backing plate



高铁垫板

High-speed backing plate

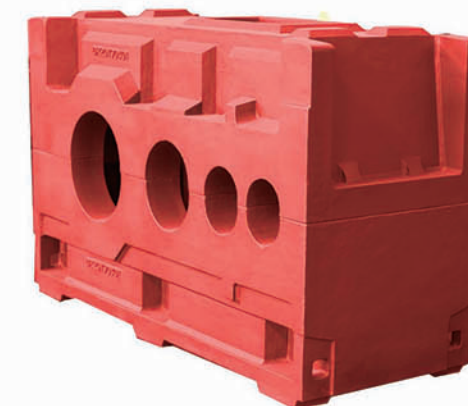




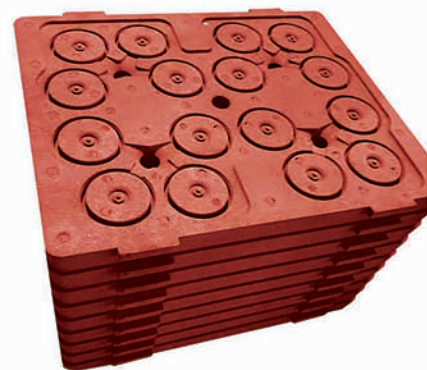
壳型工艺产品  
Shell product



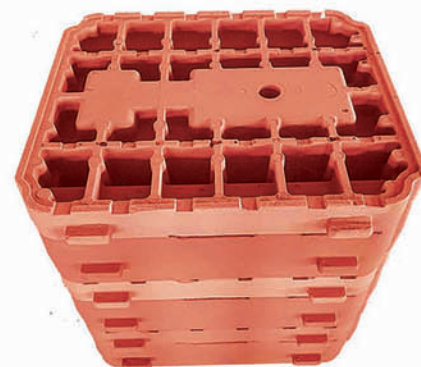
砂 箱  
Sand box



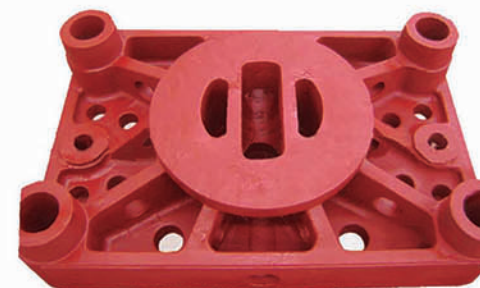
西门子变速箱  
Siemens gearbox



壳型工艺产品  
Shell product



壳型工艺产品  
Shell product



注塑机铸件  
Injection molding machine casting



注塑机铸件  
Injection molding machine casting



阀门铸件  
Valve casting



阀门铸件  
Valve casting



加工中心立柱  
Machining center column



龙门铣立柱  
Gantry Milling Column



## 植物油铸铁锅

VEGETABLE OIL CAST IRON POT



## 植物油铸铁锅

VEGETABLE OIL CAST IRON POT





## 植物油铸铁锅

VEGETABLE OIL CAST IRON POT



## 植物油铸铁锅

VEGETABLE OIL CAST IRON POT





## 高端铸铁珐琅锅

HIGH-END CAST IRON ENAMEL POT





## 高端铸铁珐琅锅

HIGH-END CAST IRON ENAMEL POT



## 高端铸铁珐琅锅

HIGH-END CAST IRON ENAMEL POT





## 高端铸铁珐琅锅

HIGH-END CAST IRON ENAMEL POT



## 高端铸铁珐琅锅

HIGH-END CAST IRON ENAMEL POT





## 高端铸铁珐琅锅

HIGH-END CAST IRON ENAMEL POT



## 高端铸铁珐琅锅

HIGH-END CAST IRON ENAMEL POT





## 高端铸铁珐琅锅

HIGH-END CAST IRON ENAMEL POT



## 高端铸铁珐琅锅

HIGH-END CAST IRON ENAMEL POT





## 合作伙伴 Partners

国内：北京、天津、上海、深圳、大连、济南、齐齐哈尔、  
长春、苏州、南京、保定、浙江、西安、长沙等

国外：美国、日本、韩国、新加坡、德国等

Domestic: Beijing, Tianjin, Shanghai, Shenzhen, Dalian, Jinan, Qiqihar,  
Changchun, Suzhou, Nanjing, Baoding, Zhejiang, Xi'an, Changsha, etc.  
Overseas: USA, Japan, Korea, Singapore, Germany, etc.

沈阳中捷机床有限公司  
Shenyang Zhongjie Machine Tool Co., Ltd.

日本山崎马扎克公司  
Japan Yamazaki Mazak Co.

德国卓轮股份有限公司  
Germany Zhuolun Co., Ltd.

河北龙凤山铸业有限公司

武汉重型机床有限公司  
Wuhan Heavy Duty Machine Tool Co., Ltd.

哈斯数控机床（中国）有限公司  
Pavel Haas CNC machine tools (China) Co., Ltd.

德国西门子有限公司  
Siemens gmbh

济南圣泉集团股份有限公司  
Jinan Shengquan Group Co., Ltd.

北京博鲁斯潘机床有限公司  
Beijing Boluspan Machine Tool Co., Ltd.

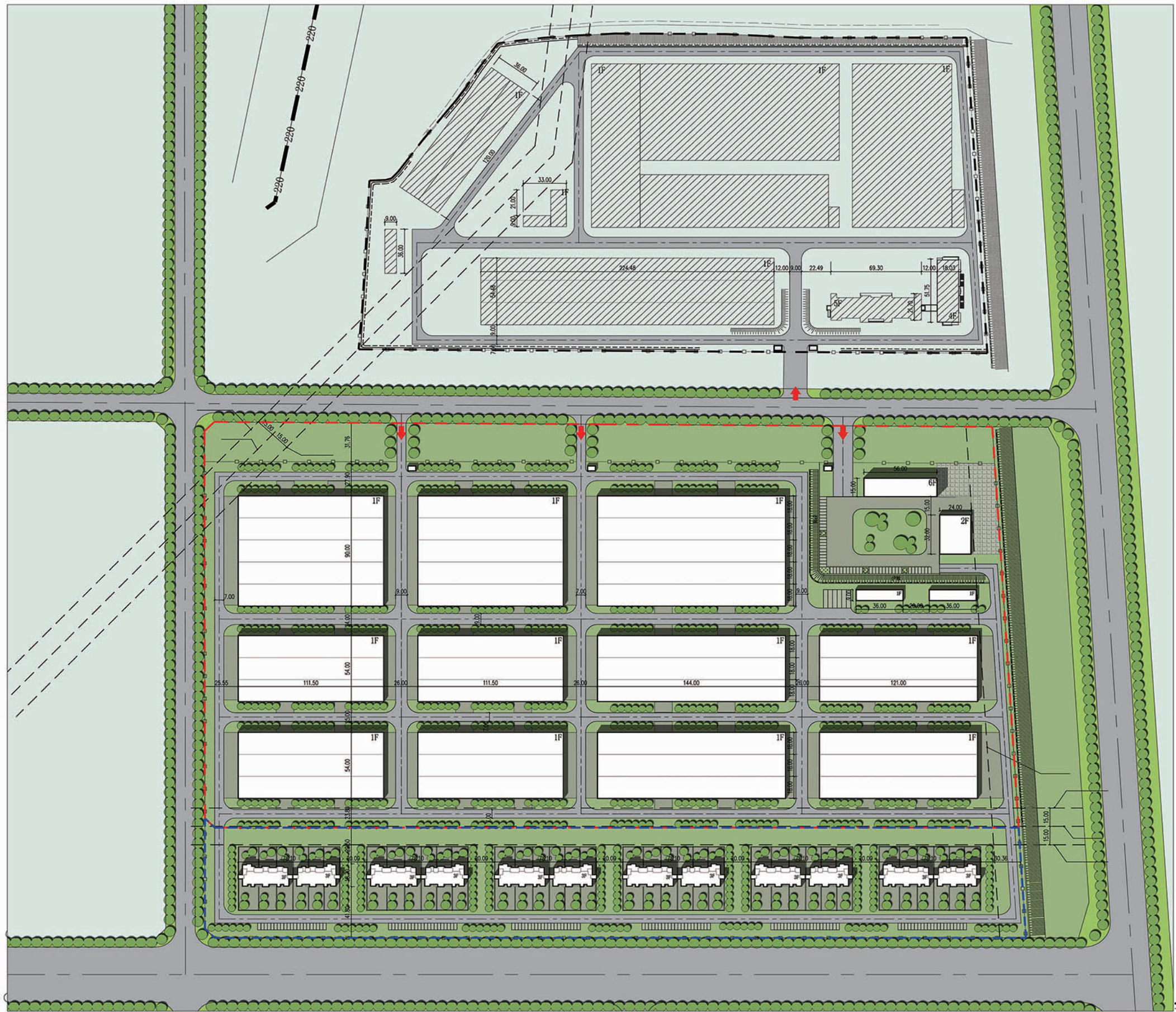
韩国斗山大宇加工中心  
Korea doosan Daewoo Processing Center

天津德馨通木型制造有限公司  
Tianjin Dexintong Wood Mould Manufacturing Co., Ltd.

河南卫华起重机械有限公司  
Henan Weihua Lifting Machinery Co., Ltd.

西安贝吉姆机床有限公司  
Xi'an Beiji Machine Tool Co., Ltd.





综合技术经济指标表			
项目	单位	数值	备注
规划可用地面积	m <sup>2</sup>	258033.43	约387.05亩
其中 原有规划可用地面积	m <sup>2</sup>	201719.74	约302.58亩
新增规划可用地面积	m <sup>2</sup>	56313.69	约84.47亩
总建筑面积	m <sup>2</sup>	108920	
其中 厂房建筑面积	m <sup>2</sup>	85734	
附属办公建筑面积	m <sup>2</sup>	7226	
专家公寓建筑面积	m <sup>2</sup>	15960	
建筑物基底总面积	m <sup>2</sup>	94371.4	
计算容积率建筑面积	m <sup>2</sup>	194652	
建筑密度	%	36.6	
容积率	%	0.75	

- 图例:
- 规划建筑
  - 原规划可用地界线
  - 新增规划可用地界线
  - 地面非机动车车位
  - 区外规划建筑
  - 规划路
  - 区内绿化
  - 地面机动车车位

总平面图





河北鼎润智能装备制造有限公司

HEBEI DINGRUN INTELLIGENT EQUIPMENT MANUFACTURE CO., LTD.

高端铸铁珐琅锅专业制造商

PROFESSIONAL MANUFACTURER OF HIGH-END CAST IRON ENAMEL POT & WARE

河北鼎润智能装备制造有限公司

HEBEI DINGRUN INTELLIGENT EQUIPMENT MANUFACTURE CO., LTD.

厂址：河北省邯郸市武安市工业园区泉上大道

FACTORY ADDRESS: QUANSHANG AVENUE, INDUSTRIAL PARK,  
WU' AN, HANDAN, HEIBEI PROVINCE, P.R.CHINA

企业网址 WEBSITE: <http://www.hbdingrun.com>

座机电话 TELEPHONE: 0310-5531075 / 86-310-5531075

电子邮箱 E-MAIL: [info@hbdingrun.com](mailto:info@hbdingrun.com)



铸世界品牌 创一流企业