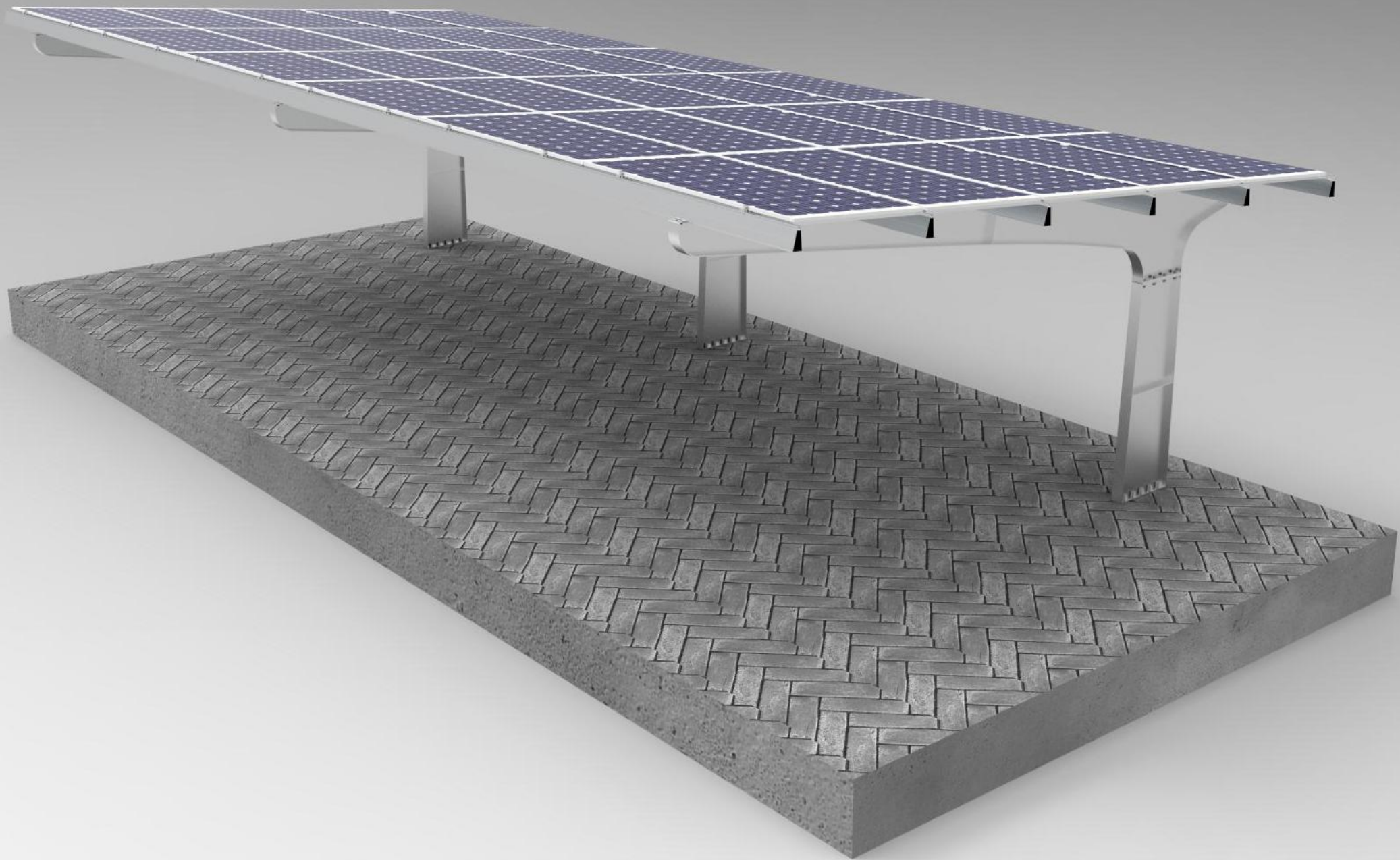


Advantages and Solution | Carbon Steel Carport System

Carbon Steel Carport System from EmperySolar adopts heavy carbon steel bracket, which has the characteristics of heavy weight, strong stability, less collision damage, wider height and width. It is suitable for different climates in different countries. It can design reasonable height, width and rain-proof characteristics according to customer's needs and actual conditions, so as to meet customer's higher demand for the Carport.

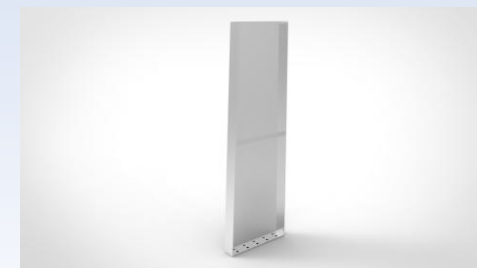
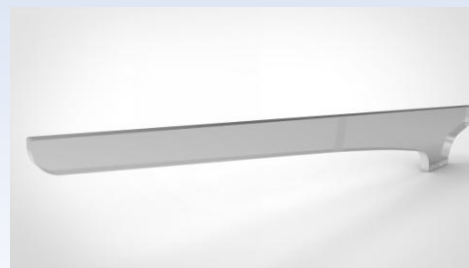
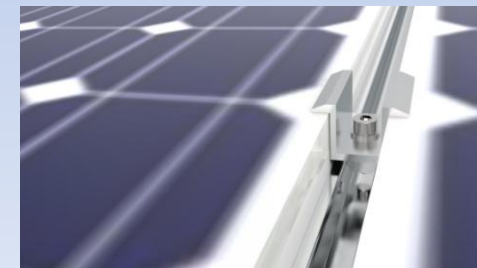
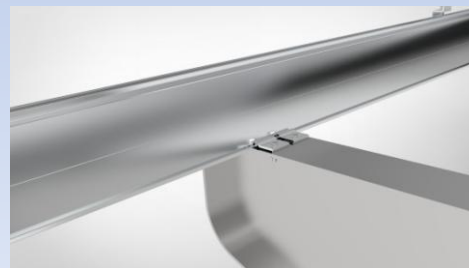
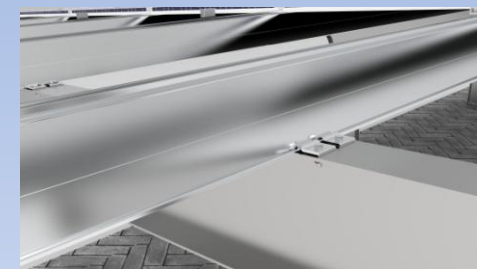
Cost-Effective Benefits

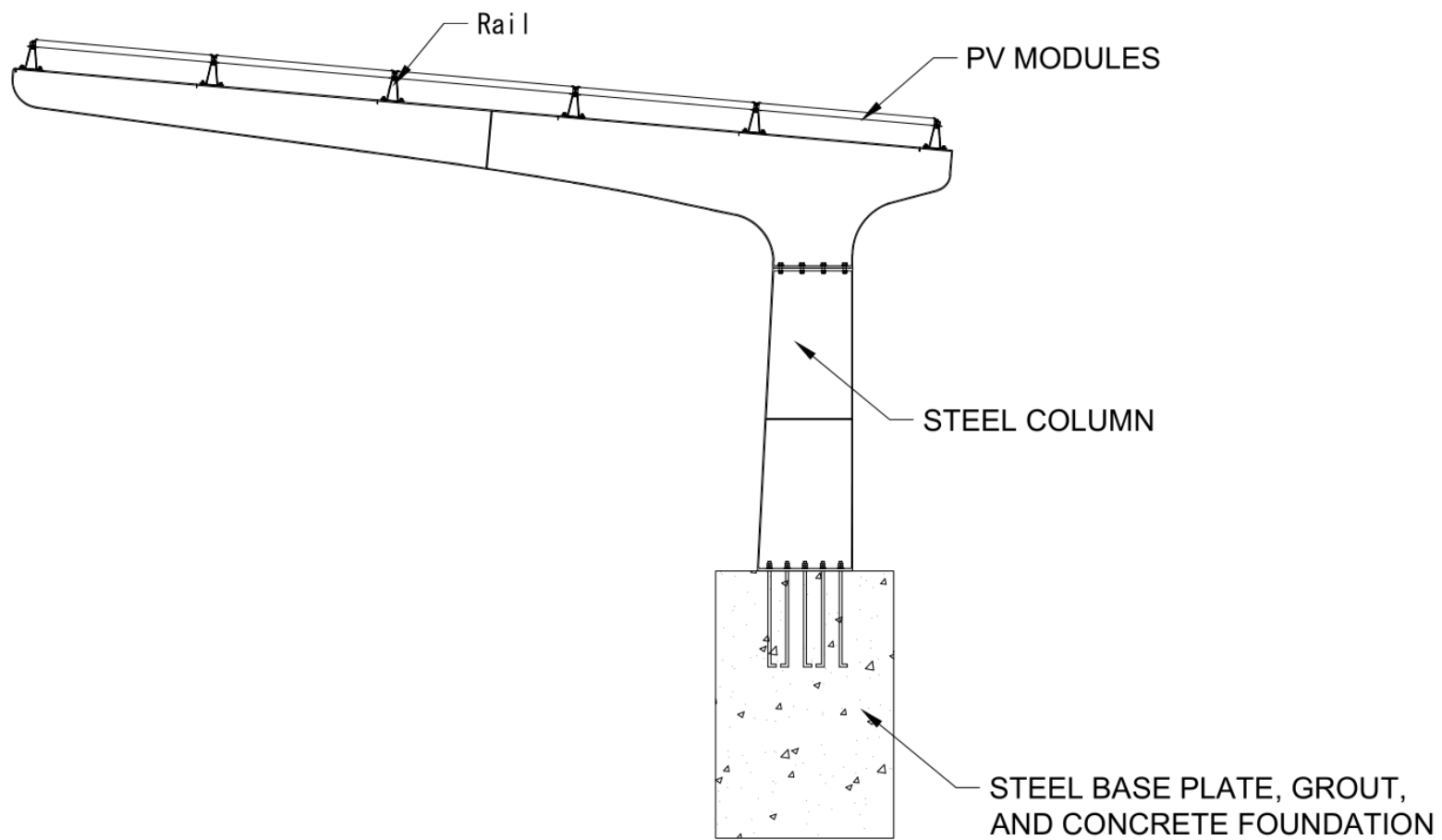
- Good stability and less collision damage
- The structure is subjected to rigorous calculation and test, and can withstand harsh environmental conditions
- The design has wider width and height.
- The use of hot dip galvanized Q235 on the rack can prolong the service life.
- The use of steel sheet and a complete set of drainage system to ensure the waterproof of the Carport.



Technical Characteristics and Parameters :

TECHNICAL INFORMATION	
Tilt Angle	0° ~20°
Max Wind Speed	60m/s
Snow Load	1.4KN/m ²
Material	Q235B & AL6005-T5
Ground Clearance	Accept Customized
Foundation	Concrete
Arrayment	Customized
Waterproof	Customized
Standard	Japan JIS C 8955:2011
Quality Assurance	10 years warranty;20 years duration





solar@emperysolar.com / www.emperysolar.com / Tel:86-592-5903050 / Fax:86-592-5903057

DESIGN • ENGINEERING • MANUFAC • TURING • INSTALLATION

Add:Room 410, No.368, Quanyutong Business center, Xianhou She, Huli Districts.Xiamen, China.