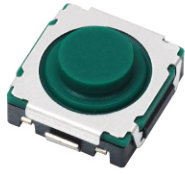




# F SERIES

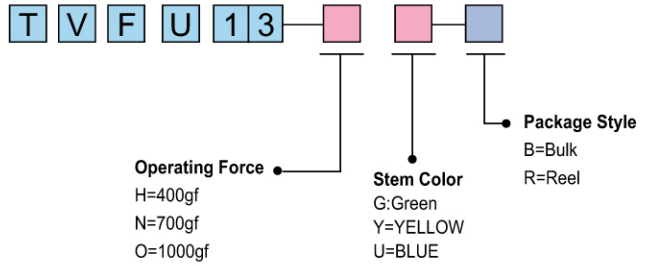
## 8.0x8.0 Silent Middle Travel Tact Switch

TACT SWITCH



**New**

### HOW TO ORDER



### ◆ FEATURES

- 8.5x8.5mm, surface mounting type
- Middle travel
- High operating force
- IP67 Waterproof sealed structure
- Silent operating function

### ◆ APPLICATIONS

- Headlights
- Side doors, trunk doors, Hoods
- Remote keyless entry
- Navigation/audio systems, HVAC
- Overhead consoles
- Steering
- Shifters

### ◆ SPECIFICATION

Items		Standard
Operating temperature range		-40°C to +90°C
Electrical performance	Rating	50mA. 12V DC
	Insulation resistance	100MΩ min. 100V DC
	Dielectric strength	250V AC for 1 min.
	Contact resistance	100mΩ max.
Durability	Lifetime	H:N=500,000Cycles O=200,000Cycles
Mechanical performance	Operating force	H:400gf N:700gf O:1000gf
	Travel	0.9 ± 0.2mm

### ◆ DIAGRAM

