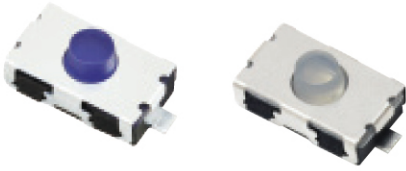




B SERIES

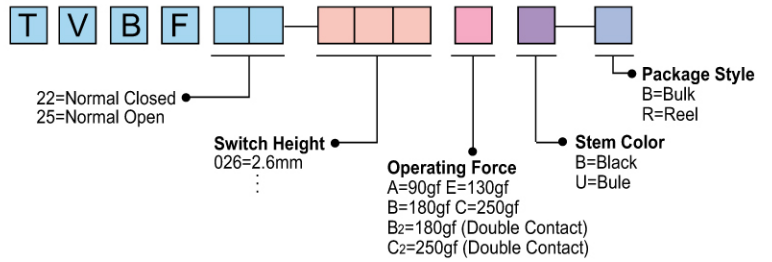
3.8x6.0 Subminiature Tact Switch for SMT

TACT SWITCH



New

HOW TO ORDER



◆ FEATURES

- Rubber button with soft touch feeling
- Normally closed and normally open type
- Dustproof contacts sealed structure
- Reflow solderable

◆ APPLICATIONS

- Healthcare equipment
- Care (wheelchairs, beds) Analysis, test equipment
- Medical equipment

◆ SPECIFICATION

Items		Standard
Operating temperature range		-30°C to +85°C
Electrical performance	Rating	50mA. 12V DC
	Insulation resistance	100MΩ min. 100V DC
	Dielectric strength	250V AC for 1 min.
	Contact resistance	100mΩ max.
Durability	Lifetime	A:E:B=100,000Cycles C=50,000Cycles
Mechanical performance	Operating force	A:90gf B:180gf C:250gf
	Travel	0.3 ± 0.1mm

◆ DIAGRAM

No.	Dimensions	Circuit Diagram
		PCB Layout
1	● TVBF22 	
2	● TVBF25 	