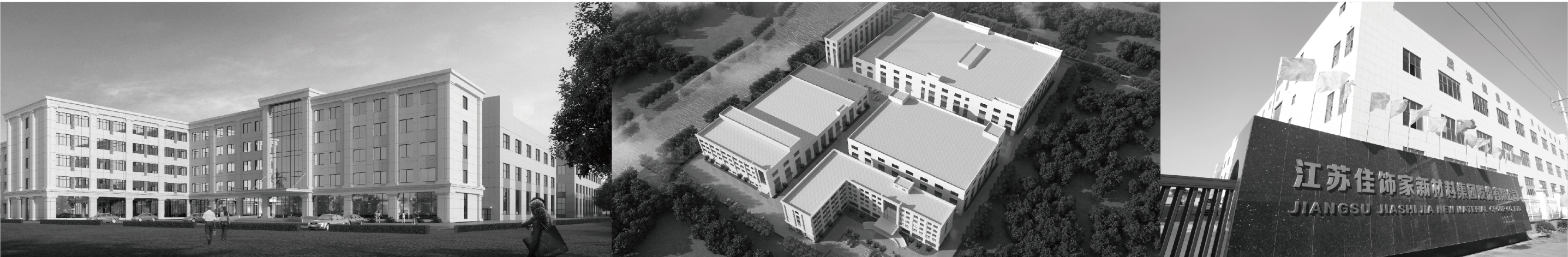


PLAIN COLOR SERIES

素彩系列



INTRODUCE

企业介绍

江苏佳饰家新材料集团股份有限公司是一家集饰面新材料设计链与供应链一体化的全产业链高新技术企业，已通过ISO9001、ISO14001、ISO45001等体系认证。集团总部位于江苏常州市经济开发区，以华东为中心，布局全国，放眼世界，在国内家居制造集中区域已建立十余家生产制造基地，产销量名列行业领先。

集团主要产品有印刷装饰纸、浸渍胶膜纸、PVC家居膜、塑胶地板彩印膜、HPL耐火片材、装饰复合科技木、3D数码打印面材、环保水性墨等。产品主要运用于定制家具、衣橱柜、地板、墙板、集成家居、实验室专用台面、火车轮船内装、工装等饰面材料领域。

集团在欧洲、美洲及国内均拥有专业设计研发团队，提供3000余款色系与产品，解决客户在饰面材料视觉与触觉上的痛点问题；并可根据客户个性化需求，设计定制专属的原创新品。集团具备完善的产品链与就近快速供应的服务体系，客户可选择集团下属生产基地就近供货，高效、便捷的服务可满足广大客户一站式采购需求。集团与下游众多品牌客户已达成长期战略合作关系，产品质量与服务获得客户与合作伙伴的一致认可。

不忘初心、砥砺前行，集团始终坚持只为优质家居服务，制造健康美好空间，始终秉承为客户创造价值的经营理念，努力做一家受人尊重的企业。

佳饰家 集装饰材料设计、研发、生产、销售、服务于一体化的专业化装饰材料解决方案服务商。

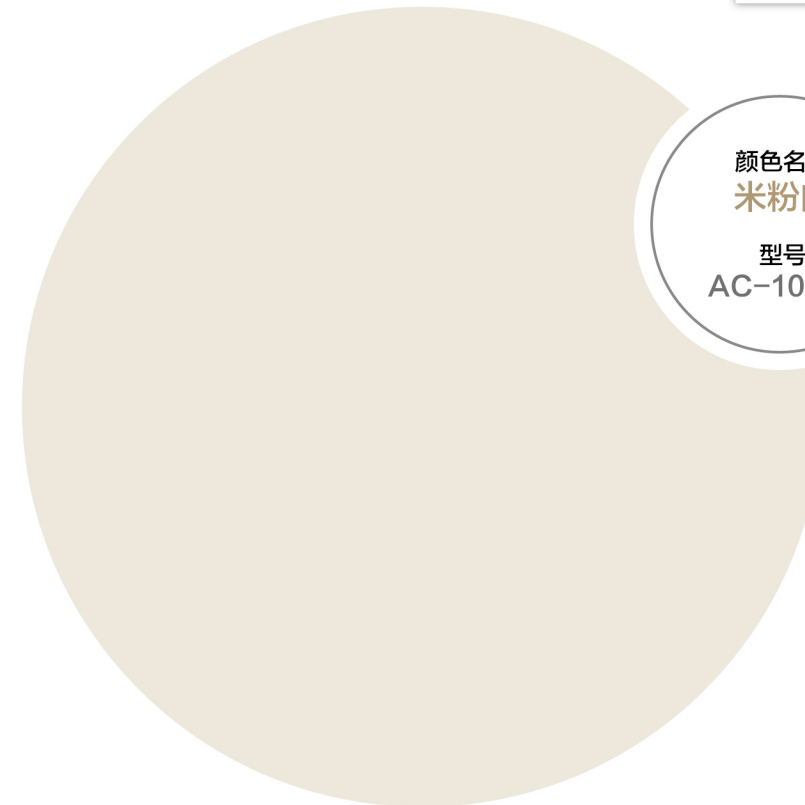
Jiangsu Jiashijia New Material Group CO., Ltd is a national high-tech enterprise group integrating the design chain and supply chain of new decorative materials. We are headquartered in Economic Development Zone, Changzhou City, Jiangsu Province. Our group are centered on East China, and then we have a nationwide layout and a global perspective. We have established more than 10 production bases in the domestic household furnishing manufacturing agglomeration. We have been certified ISO9001, ISO14001, ISO45001 and other system certifications. By the way our production and sales are also among the best.

Main products of Jiashijia group include printing decorative paper, impregnated melamine paper, PVC printing film for furniture and flooring, HPL, Engineered Veneer, 3D digital printing paper, environment-friendly water-based ink, etc. The products are mainly used in customized furniture, wardrobes, cupboards, floors, wall panels, integrated homes, special countertops for laboratories, interior decoration of trains and ships, Industrial decoration and other decorated materials. Our group has professional R & D teams in Europe, America and China, providing more than 3,000 colors and designs to solve customers' issue in the vision and touch of decorative materials products. We can design and customize exclusive original new products according to customers' individual needs. We also have a complete product chain and the nearest emergency supply and service system, so customers can choose the production base of the group to purchase goods nearby. The efficient and convenient services can meet customers' one-stop procurement. We have reached long-term strategic cooperation with many downstream brand customers, and our products have obtained affirmation and faith by our customers and partners.

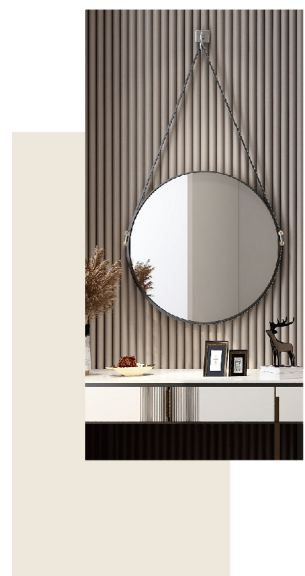
The standard and principle we always adhere to is providing high-quality home service, creating a healthy and beautiful space, and our management idea is to create more value to our customers. "Never forget the original intention and forge ahead." Our ultimate aim is to become the preferred partner of many domestic and foreign brand enterprises.



BEIGE
WHITE



颜色名称
米粉白
型号
AC-1001B



米粉白介于白色和米黄色之间，
比黄色清淡，又比白色浓烈，更显大气温柔，
它能营造出甜美与优雅，于家居而言，
飘逸的新丽感觉则让它散发一股清新之味，唯美怡人。
米粉白的色彩并不十分浓重突出，
与各种彩色系的颜色搭配都不会显得十分突兀。



搭配：2359-5

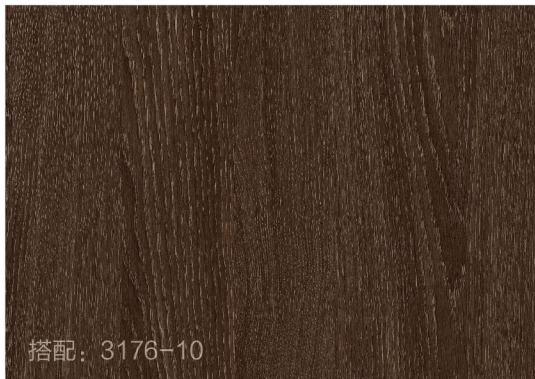
POWDER WHITE



颜色名称
延禧白
型号
AC-1002B



延禧白是高级灰与白色的组合，
凸显朦胧清雅之感，仿佛是绸缎纱面一般。
几种浅色调的叠加浑然一体，
在略微灰暗的光线下似乎具有天鹅绒一般的触感，
设计给予了空间充分的层次感。

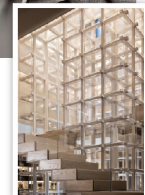
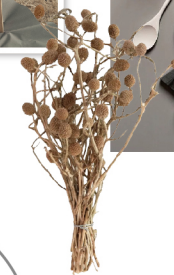


搭配: 3176-10

CAKA MAROON



MAROON



颜色名称
茶卡栗

型号
AC-1003B

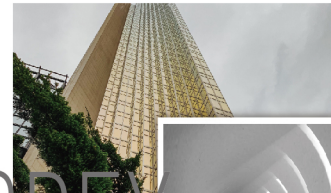
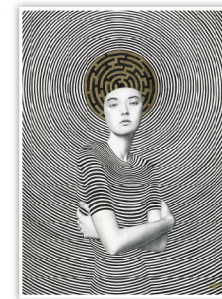


茶卡栗是一种介于褐色和浅褐色之间的色彩，是一种经典的大地色，朴实无华中带着舒缓与知性，黑色、白色、奶油色都可以与卡其色搭配。同时红、橙、绿、黄都可以作为点缀色出现，与卡其色交相辉映。

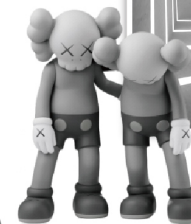


AGATE GRAY

搭配: 2592-1



GREY



颜色名称
玛瑙灰
型号
AC-1005



浅灰而略带银光的颜色，
银，光泽耀眼但却温和，灰，经典沉稳气质内敛，
二色调配之下，室内空间呈现优雅奢华之感。
银灰色富有光泽感，能将灰色的沉稳大气表现出来，
身处银灰色的优雅卧室，
仿若置身镁光灯下，每一刻都凝聚焦点。



FEATHER GREY



FEATHER



颜色名称
燕羽灰
型号
AC-1006



它完美结合了灰色的高贵内敛和棕色的温馨惬意。
它在家具设计中经常使用，
搭配洁净感的白色和深色。
无论是深色调抑或是浅色调，
增添一抹灰棕色都会让空间变得温馨。



CLIFF GRAY



CLIFF



颜色名称
青崖灰
型号
AC-1007



灰色并非是‘无色’而是将所有色彩融合之后的颜色，它具有非常强的“万搭”功能，和不同的颜色进行搭配，就能呈现出不同的效果。
沉稳灰调营造和谐宁静的氛围，灰色搭配的整体空间透露出简单而又沉稳的感觉。



Classic
CONTEMPORARY

Graceful and curvaceous,
with self-assured elegance.

Classic Contemporary
is highly tactile
with a multiplicity
of textures and finishes.



DESERT



颜色名称
沙黄灰

型号
AC-1008



沙黄灰是一款中性灰色调，来自大自然的色彩，还带着灰色调的特立独行，细腻的视感和复古的气息，将沙黄灰运用于空间设计中，棕色与灰色搭配，自然质朴，轻奢与温暖，二者分别传达出“力量”与“希望”，相互独立又相辅相成。



江苏佳饰家新材料集团股份有限公司

ADD: (总部地址) 江苏省常州市经济开发区南孟路26号
No.26 Nanmeng Road, Changzhou Economic Development Zone, Jiangsu
Tel: 0519-81668088 Fax: 0519-88500628 E-mail: jiajihia@jsjdecor.cn

江苏佳饰家进出口有限公司

ADD: (总部地址) 江苏省常州市经济开发区南孟路26号
No.26 Nanmeng Road, Changzhou Economic Development Zone, Jiangsu
Tel: 13584390928 E-mail: jiajihia@jsjdecor.cn

成都佳饰家装饰新材料科技有限公司

ADD: 成都崇州经济开发区宏业大道南段738号
No.738 South Section of Hongye Avenue, Chongzhou Economic
Development Zone, Chengdu
Tel: 028-61713255 18010670017 Fax: 028-61716126

临沂佳饰家新材料有限公司

ADD: 山东省临沂市费县探沂镇工业园
Tanyi Town Industrial Park, Fei County, Linyi City, Shandong Province
Tel: 0539-56096066 Fax: 0539-56096066

柳州佳饰家装饰材料有限公司

ADD: 广西省柳州市柳北区209国道旁
Beside 209 National Road, Liubei District, Liuzhou City, Guangxi Province
Tel: 0772-5373394 Fax: 0772-5373396

贵州佳饰家新材料有限公司

ADD: 贵州省黔东南州榕江县古州镇王岭工业园区
Wangling Industrial Park, Guzhou Town, Rongjiang County, Qiandongnan
Prefecture, Guizhou Province
Tel: 0855-3921880 Fax: 0855-3921220

重庆佳饰家新材料有限公司

ADD: 重庆市江津区珞璜镇中兴一路2号
No. 2 Zhongxing 1st Road, Luohuang Town, Jiangjin District, Chongqing
Tel: 028-61713255 Fax: 028-61716126