

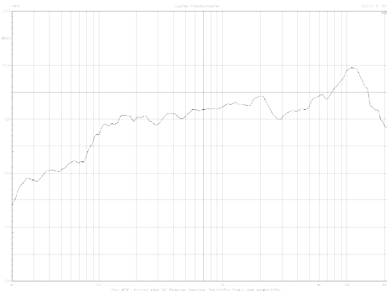
G8

Applications

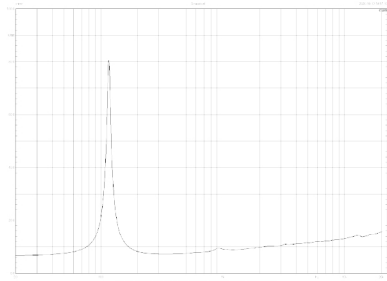
- Dining bar
- Meeting room
- Classroom

Feature

- 50mm big voice coil
- To 80HZ Low frequency response
- Excellent sound performance



Frequency response



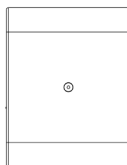
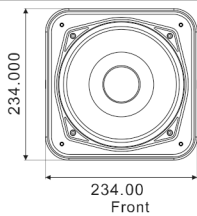
Impedance

Technical specification

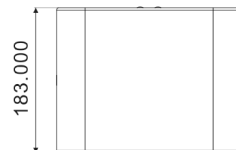
- **FREQUENCY RESPONSE:** 100 Hz – 20 kHz (± 3 dB)
80 Hz – 20 kHz (-10 dB)
- **NOMINAL COVERAGE^(-dB):** 80° (H) 80° (V) Constant directivity
- **SENSITIVITY(@1w/1m):** 94 dB SPL
- **POWER RATING(AES):** 150W
- **NOMINAL IMPEDANCE:** 8 ohm
- **MAXIMUM SPL:** 115 dB/121 dB SPL peak
- **DRIVERS:** 1 x 8" Full range driver (50mm voice coil)

Physical data

- **DIMENSIONS(HxWxD):** 234 x 234 x 183 mm
- **WEIGHT:** 9.8 kg
- **CONNECTORS:** Terminal
- **SPEAKER CABLES:** red + , black -
- **MATERIALS:** 9mm, 12mm multi-plywood
- **FINISH:** Black polyurea paintings
- **GRILLE:** Black epoxy mesh grille with acoustically reticulated foam
- **RIGGING:** Lifting point



Top



Side