



HD TLS360 Portable 3D Laser Scanner

Small body fully capability

◆ HD TLS360 Portable 3D Laser Scanner

The HD TLS360 Portable 3D Laser Scanner is a brand-new laser scanner developed by Haida Cloud Tech (Hi-Cloud Tech). It is a small size, portable, easy to carry, fast scanning and cost-effective tool.

The design concept is that of a lightweight - portable device. It integrates the following functions among others: Laser Scanning, Image Acquisition and GNSS. The compact device does not use a target, and can complete 3D data scanning and acquisition with just one click. It is especially suitable for 3D laser application scenarios that require high precision, high efficiency and low cost. Hence, the HD TLS360 Portable 3D Laser Scanner can be used in these and other situations: Building elevation measurement, Accident scene investigation, Pile volume calculation, Indoor measurements, Decorations, Plane and vertical section drawing, Digital parks, University teaching and other fields.

◆ Features



Easy to carry

4kg, one-men operation



Scanning when it's stationed

$\pm 5^\circ$ tilt compensation, no need to leveling



Fast scanning

90s for one station, high performance



Different expansion choices

Panoramic camera or GNSS antenna



One clicks operation

Apps available for wireless control



Various applications

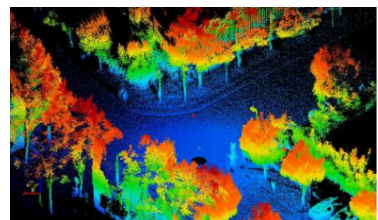
All environment can be scanned via rod

◆ Data samples

Indoor data



Field data



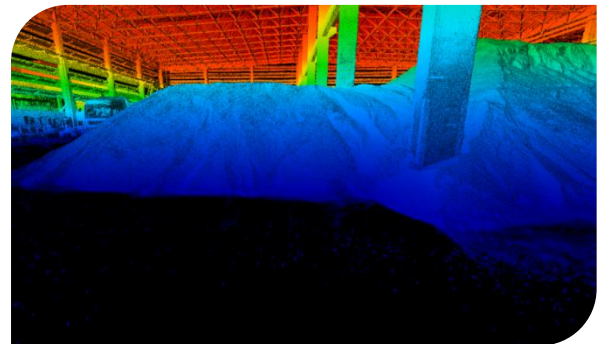
HD TLS360 laser scanner delivers high quality point cloud and panoramic images, which be marched and processed into different type of data, it can be used in various applications for accuracy assessment, quality control and data review.

◆ Application

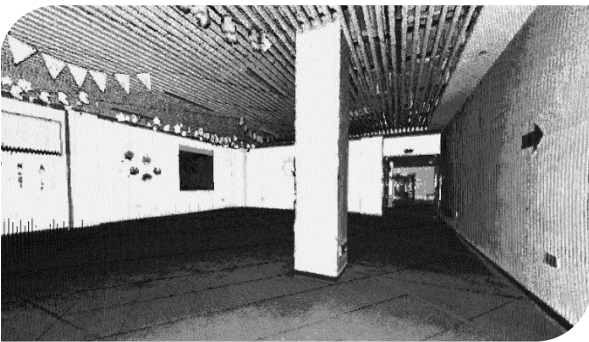
◆ Facade



◆ Pit volume calculation



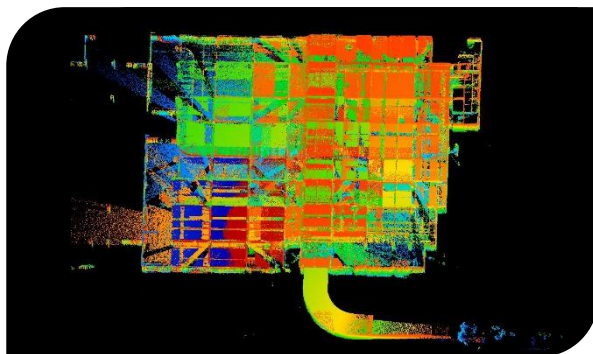
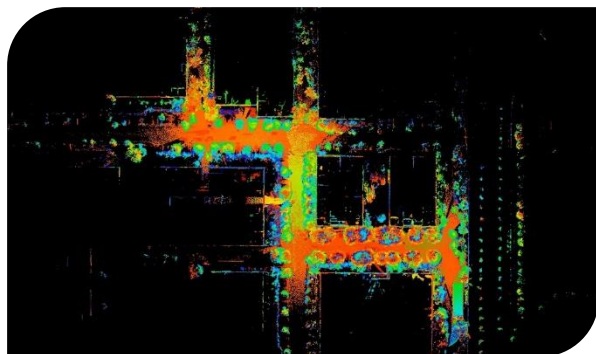
◆ In door application



◆ Forensics



Multiple stations registration



Technical specifications

Items	Technical parameters
Maximal range measurement	150m
Minimal range measurement	0.2m
Range Accuracy	3cm
Scan point rate	320,000pts/s
FOV (vertical)	280°
FOV (horizontal)	360°
Scan Speed	4°/S ~ 9°/S
Panoramic image resolution	18MP (external camera)
Duo Axis Compensation	±5°
Data Storage	256G (MSATA) +128G (TF)
Data transmission	GigE/ TF Card
Operation	Support remote control of mobile device
Typic duration	> 4h
Dimensions	364mm×139.5mm×122mm
Weight	ca. 4kg

