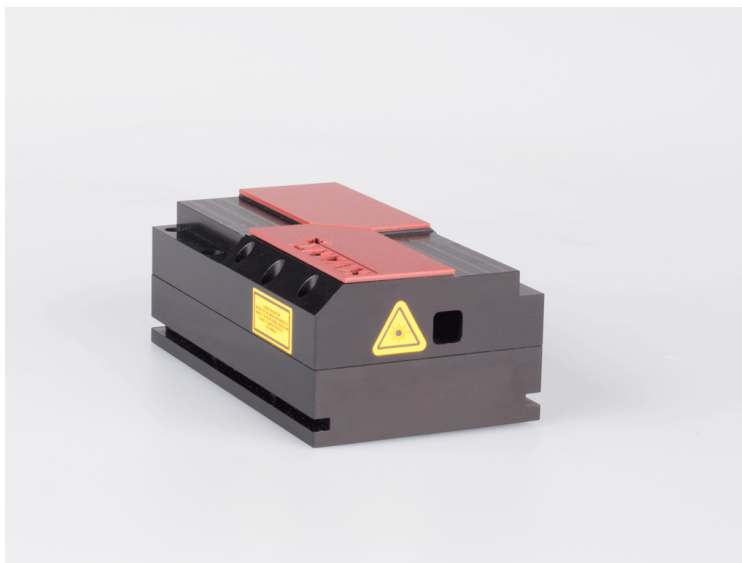


RLM-600D

PRODUCT SPECIFICATION SHEET



SPECIFICATIONS

| | |
|---|-----------|
| Optical power (mW): | 600 |
| Center wavelength (nm): | 660 |
| Center wavelength tolerance (nm): | ± 5 |
| Beam diameter (95% of power, horizontal*vertical, mm): | 2.5x3.5 |
| Beam divergence (half angle, mrad): | 0.5 |
| Linear polarization: | Y |
| M² (horizontal/vertical): | 5/7 |
| Modulation freq. (kHz): | 100 |
| Peak power consumption TEC circuit: | 24V/1.5A |
| Peak power consumption LD circuit: | 24V/0.5A |
| Dimensions (LxWxH,mm): | 132x78x51 |
| External driver part dimensions (LxWxH,mm): | 117x89x34 |