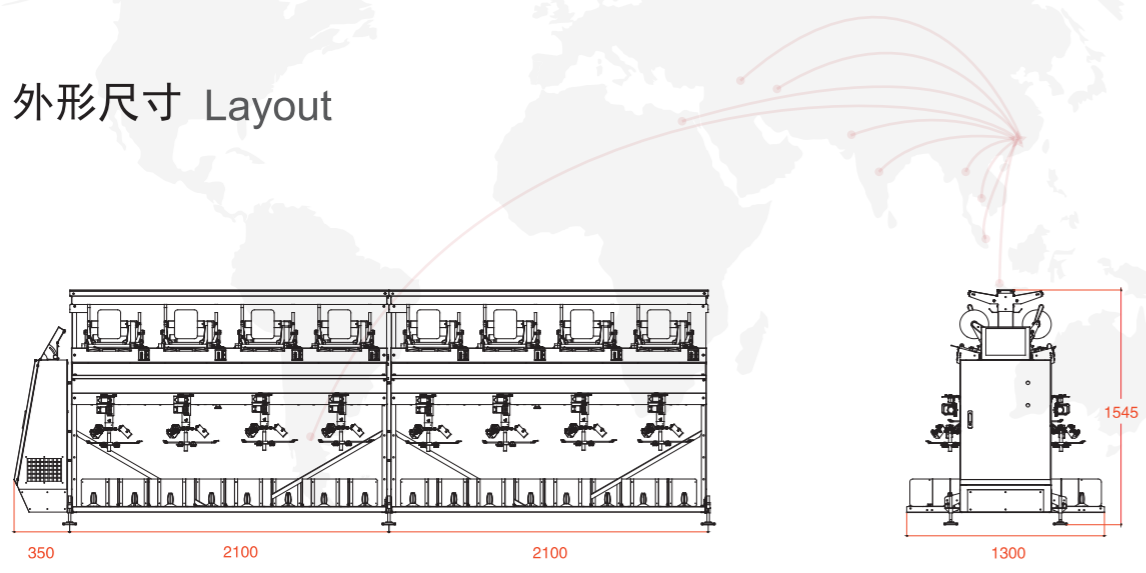


工艺参数 Technological parameters

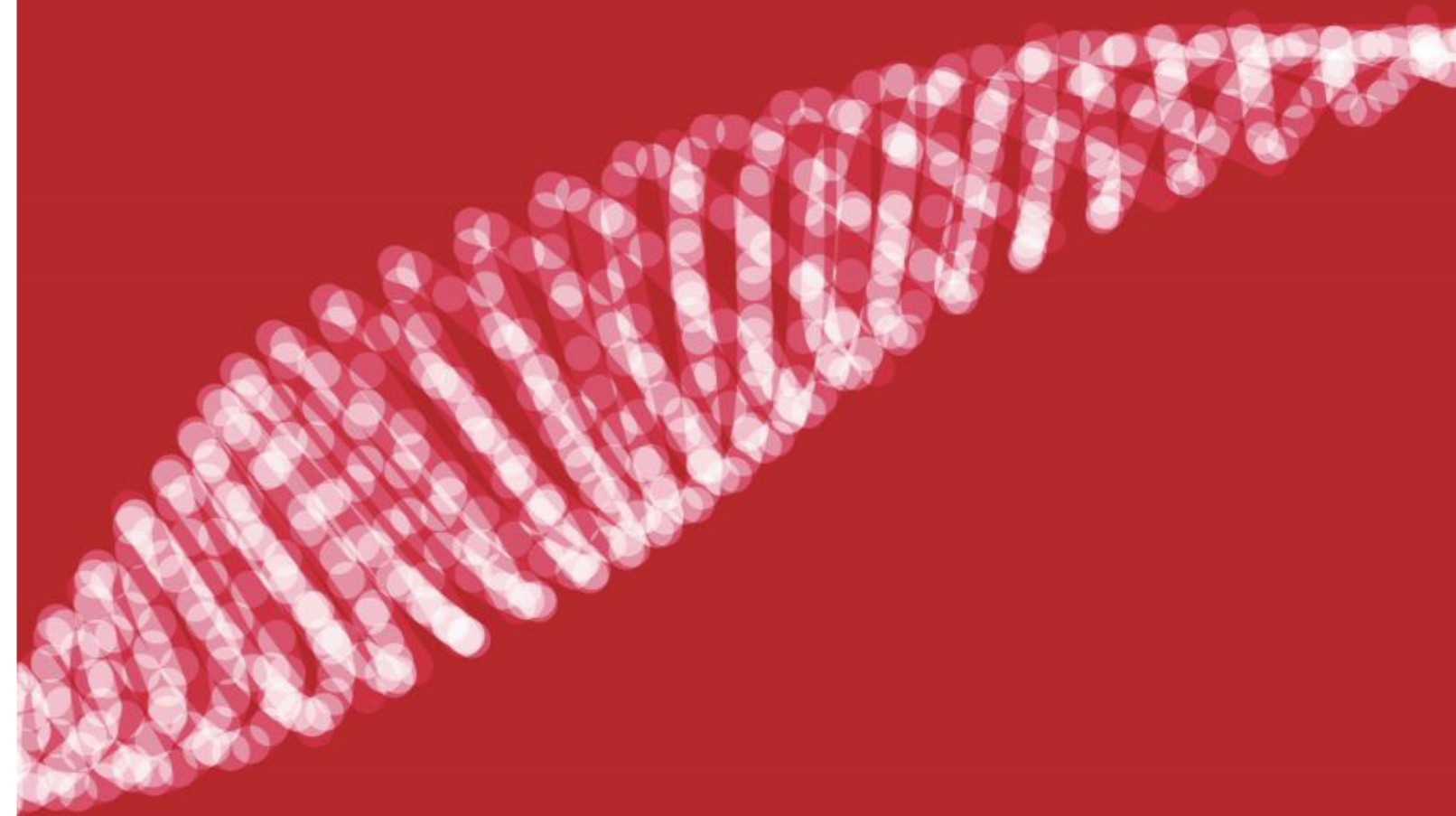
机型 Machine model	PW2-3 (4)/FW2-3(4)
支数 Count range	Ne 6-200
喂入纱筒直径 Diameter of supply package	250mm
并纱筒子直径 Diameter of assembled package	200mm
纱线品种 Type of yarn	短纤纱, 化纤 Staple fiber, Synthetic
卷取速度 Winding speed	1200m/min (依据生产工艺而定 Depending on process parameters)

外形尺寸 Layout



机器尺寸 Machine dimensions

锭数 Quantity	8锭/Sp	16锭/Sp	24锭/Sp	32锭/Sp	40锭/Sp	48锭/Sp	56锭/Sp	64锭/Sp	72锭/Sp	80锭/Sp	88锭/Sp	96锭/Sp
长度 Length(mm)	2450	4550	6650	8750	10850	12950	15050	17150	19250	21350	23450	25550
宽度 Width(mm)	1300											
高度 Heigh(mm)	1545											
净重 Net weight(kg)	520	920	1320	1720	2120	2520	2920	3320	3720	4120	4520	4920



Precision Assembly Winder 精密拨片、拨叉并纱机



苏州英迈杰机械有限公司
Suzhou Imagin Machinery Co.,Ltd.

地址: 江苏省苏州工业园区唯文路7号A幢 Add: Block A, No.7 Weiwen Road, Suzhou Industrial Park, Suzhou, Jiangsu, China
 电话: 0086-512-6706 6492 Tel: 0086-512-6706 6492
 传真: 0086-512-6706 6493 Fax: 0086-512-6706 6493
 网址: www.imaginsz.com Http: //www.imaginsz.com

- 本样本仅作参考, 不作为技术验收依据。
- 为提高产品质量, 本公司保留更改规格之权力, 恕不另行通知。
- We reserve the right to modify the characteristics of the machines described herein without prior notice.
- The data given in this brochure are not intended as a guarantee.

苏州英迈杰机械有限公司
Suzhou Imagin Machinery Co.,Ltd.

特点 Features

- 精密卷绕，最大可增加30%重量
Precision winding to increase max.30% weight
- 双电机独立控制，实现任意工艺要求
Any process range with two motors
- 永不分纱，无重叠纱
Zero split ends and pattering
- 直线型纱路
Optimized yarn path concept
- 单锭定长和速度控制
Individual length measuring and speed control

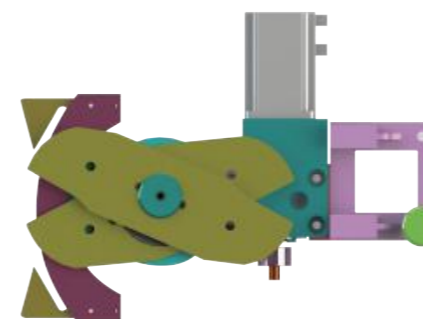
选择精密拨片、拨叉，您能实现

What can you expect from precision winder of PWFW types

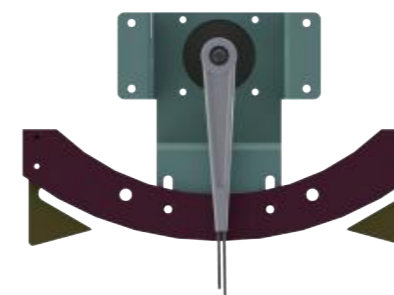
- 最好的纱线质量，最低的毛羽增量
Best yarn quality, less hairness increase
- 最大的产量，速度可达1200m/min
Speed up to 1200m/min
- 精确的定长和直径
Higher precision for length and diameter
- 减少倍捻断头，提高效率
Less breakages on TFO
- 增加无结纱线长度
More knotless yarn length

主要参数 Features

型号	Type	PW2-3 (4)\FW2-3 (4)
锭距	Gauge	505mm
每节锭数	Spindles per section	8
可并根数	No.of yarn assembly	3 (4)
卷绕速度	Winding speed	1200m/min
驱动方式	Drive	单锭伺服驱动 Individual servo motor
电机功率	Motor	300w
张力控制	Yarn tension	电磁张力 magnetic tension
往复动程	Traverse	6", 8"
机器长度	Length of machine	350+(锭数SP ÷ 8) x 2100mm
隔纱板	Separator	标配 Have
选配装置	Optional device	吹吸风装置 Overhead travelling blower



PW拨片



FW拨叉

