

射频发生器

RF power supply



产品用途 Application

● 适用领域：

光伏产业、平板显示器行业、半导体行业、化工行业、实验室、科研、制造业等。

● 适用工艺：

等离子体增强化学气相沉积（PECVD）、等离子体刻蚀、等离子体清洗、射频离子源、等离子体扩散、等离子体聚合溅射、反应溅射等。

● Application field

Photovoltaic industry, flat panel display industry, semiconductor industry, chemical industry, laboratory, scientific research, manufacturing industry, etc.

● Applicable technology

Plasma enhanced chemical vapor deposition (PECVD), plasma etching, plasma cleaning, RF ion source, plasma diffusion, plasma polymerization sputtering, reactive sputtering, etc.

产品特点 Features

● 全数字控制，高稳定性和高可靠性

● 进线具有APFC模块，提高输入侧功率因数，降低谐波

● 优化结构设计，功率密度大

● 高亮LCD显示，操作直观

● 稳定可靠的功放和直流控制模块

● 连续、脉冲输出模式

● 驻波1.5时仍能输出额定功率

● 三个可编程模拟量输出

● 完善的保护功能

● Full digital control, high stability and reliability

● The incoming line has an APFC module to improve the power factor at the input side and reduce harmonics

● Optimized structure design, high power density

● Highlight LCD display, intuitive operation

● Stable and reliable power amplifier and DC control module

● Continuous and pulse output mode

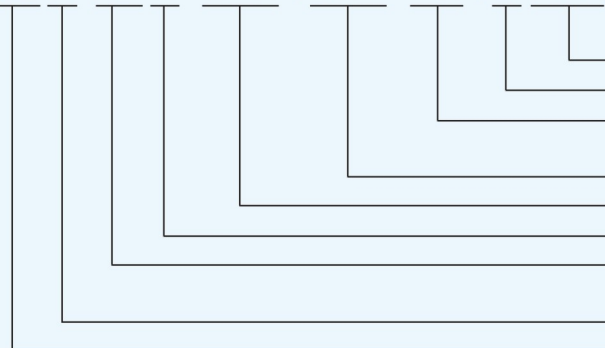
● Rated power can still be output when standing wave is 1.5

● Three programmable analog output

● Perfect protection function

型号定义 Model Definition

RLS □ □ □ - □ □ □ / □ □ □ - □ □ / □ □ □ □



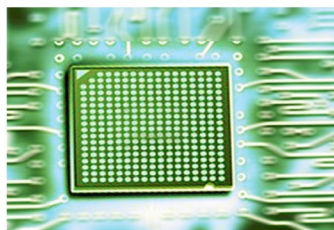
厂家自定义
 通讯方式
 输入电压
 S2: 1Φ220V T4: 3Φ400V
 输出频率 (13: 13.56MHz)
 输出功率
 产品版本
 最大功率
 08: 800W 15: 1500W 30: 3000W
 外形尺寸
 RLS系列射频发生器

Manufacturer customization
 Communication mode
 Input voltage
 S2: 1Φ220V T4: 3Φ400V
 Output frequency (13: 13.56MHz)
 Output power
 Design NO.
 Maximum power
 08: 800W 15: 1500W 30: 3000W
 Outline dimension
 RLS series RF generator

规格参数 Specification Parameter

输入	
输入电压	AC220V ± 10% 3Φ AC380V ± 5%
输入频率	45 ~ 65Hz
输出	
输出频率	2MHz、13.56MHz、27.12MHz、40.68MHz
输出功率	0.5 ~ 5kW
输出功率调节范围	1 ~ 100%
输出阻抗	50Ω +j0
输出接口	N型
输出模式	连续、脉冲
脉冲频率	0.1 ~ 10kHz
占空比	10 ~ 90%
性能指标	
功率因数	0.98
频率稳定精度	± 0.005%
效率	75% (额定输出时)
谐波	< -45dBc
杂散	< -50dBc
外部控制接口	模拟量、通讯、同步
通信方式	标配: RS485通讯接口, 可选Ether CAT、工业以太网等

Input	
Input voltage	AC220V ± 10% 3Φ AC380V ± 5%
Input frequency	45 ~ 65Hz
Output	
Output frequency	2MHz、13.56MHz、27.12MHz、40.68MHz
Output power	0.5 ~ 5kW
Output power regulation range	1 ~ 100%
Output impedance	50Ω +j0
Output interface	N type
Output mode	Continuous and pulse
Pulse frequency	0.1 ~ 10kHz
Duty cycle	10 ~ 90%
Performance index	
Power factor	0.98
Frequency stability accuracy	± 0.005%
Efficiency	75% (at rated output)
Harmonic	< -45dBc
Stray	< -50dBc
External control interface	Analog quantity, communication and synchronization
Communication mode	Standard configuration: RS485 communication interface, optional Ether CAT, industrial Ethernet, etc



自动匹配器

Automatic matcher



产品用途 Application

● 适用领域:

光伏产业、平板显示器行业、半导体行业、化工业、实验室、科研、制造业等。

● 适用工艺:

等离子体增强化学气相沉积 (PECVD)、等离子体刻蚀、等离子体清洗、射频离子源、等离子体扩散、等离子体聚合溅射、反应溅射等。

● Application field

Photovoltaic industry, flat panel display industry, semiconductor industry, chemical industry, laboratory, scientific research, manufacturing industry, etc.

● Applicable technology

Plasma enhanced chemical vapor deposition (PECVD), plasma etching, plasma cleaning, RF ion source, plasma diffusion, plasma polymerization sputtering, reactive sputtering, etc.

产品特点 Features

● 全数字控制，匹配精度高，匹配时间短

● 采用真空电容，可靠性高，使用寿命长

● 结构紧凑，体积小，安装便捷

● 超宽匹配范围，可定制适配任意负载

● 具有手动/自动匹配功能

● 具有保持和预置设定功能

● 具有通讯功能，可独立连接上位机实时显示负载状态

● Full digital control, high matching accuracy and short matching time

● Adopt vacuum capacitor, high reliability and long service life

● Compact structure, small volume and convenient installation

● With an ultra wide matching range and can be customized to adapt to any load

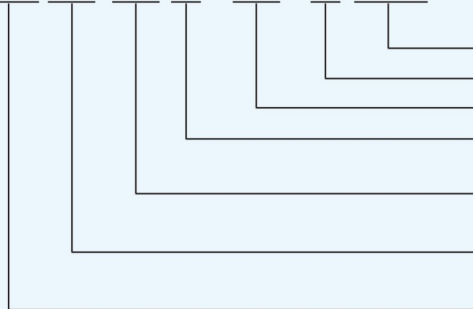
● With manual / auto matching functions

● With the functions of keeping and preset

● With communication function can independently connect to the upper computer to display the load status in real time

型号定义 Model Definition

RMA □□ □□ □ - □□ / □ □□□

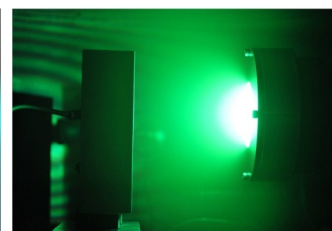
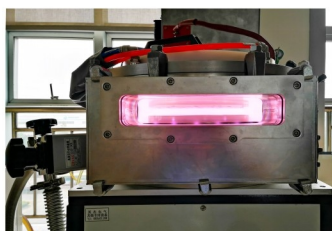


- | | |
|--------------------|---------------------------------|
| 厂家自定义 | Manufacturer customization |
| 通讯方式 | Communication mode |
| 输入电压 (S2: 1Φ220V) | Input voltage (S2: 1Φ220V) |
| 负载类型 | Load type |
| L: L型 P: π型 | L: L mode P: π mode |
| 输出频率 | Output frequency |
| 适配频率 13: 13.56MHz | Adaptive frequency 13: 13.56MHz |
| 输出功率 | Output power |
| 08: 800W 15: 1500W | 08: 800W 15: 1500W |
| RMA系列自动匹配器 | RMA series automatic matcher |

规格参数 Specification Parameter

控制电压	AC220V ± 10%
传输功率	0.5 ~ 5kW
频率	2MHz、13.56MHz、27.12MHz、40.68MHz
匹配时间	端对端 < 5S, 预设点到匹配点 < 0.5 ~ 3S
驻波	< 1.2
阻抗实部	5 ~ 200Ω
阻抗虚部	+200 ~ -200j
射频输出电压	4000Vpeak
射频输出电流	25 ~ 40Arms
输入接口	N型
输出接口	铜排或L29

Control voltage	AC220V ± 10%
Transmission power	0.5 ~ 5kW
Frequency	2MHz、13.56MHz、27.12MHz、40.68MHz
Matching time	End to end < 5S, preset point to match point < 0.5 ~ 3S
Standing wave	< 1.2
Impedance real part	5 ~ 200Ω
Impedance imaginary part	+200 ~ -200j
RF output voltage	4000Vpeak
RF output current	25 ~ 40Arms
Input interface	N type
Output interface	Copper bar or L29



版本号:147 CL20201125,本资料所涉及内容、图片等知识产权均归属于本公司,未经授权不得使用。图中内容以实物为准,本公司具有最终解释权。
Version number:147 CL20201125,The information, pictures and other intellectual property rights involved in the content are attributable to the company, without authorization shall not be used. The pictures of the contents in kind prevail, the company has the final interpretation right.



四川英杰电气股份有限公司
地址: 四川省德阳市金沙江西路686号
销售热线: 0838-2900585、586
传真: 0838-2900985
邮箱: injet@injet.cn
网址: www.injet.cn

Sichuan Injet Electric Co., Ltd.
ADD: NO.686 West Jinshajiang Road, Deyang City, Sichuan Province, P.R.China
Sale: 0838-2900585、586
Fax: 0838-2900985
E-mail: injet@injet.cn
Web: www.injet.cn