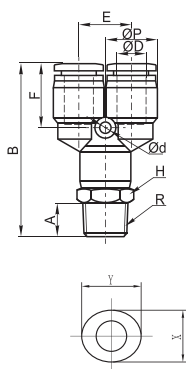


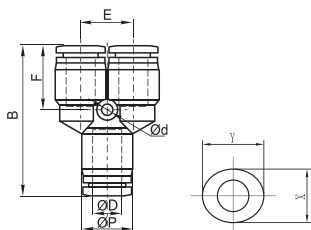
■ 外形尺寸图 (mm)

PPX Y型螺纹三通



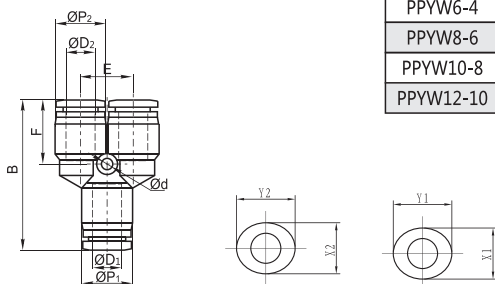
型号	2-ØD	B	E	ØP	A	R	H	F	Ød	X	Y
PPX4-M5	4	40.1	10.5	10.5	4	M5	10	13.5	-	10	11.5
PPX4-01	4	43.1	10.5	10.5	7	R1/8	10	13.5	-		
PPX4-02	4	45.6	10.5	10.5	9.5	R1/4	14	13.5	-		
PPX6-M5	6	43.1	13	13	4	M5	12	14.5	3.2	12.5	14
PPX6-01	6	44.1	13	13	7	R1/8	12	14.5	3.2		
PPX6-02	6	46.6	13	13	9.5	R1/4	14	14.5	3.2		
PPX6-03	6	48.1	13	13	10.5	R3/8	17	14.5	3.2		
PPX6-04	6	52.1	13	13	13	R1/2	21	14.5	3.2	14	15.8
PPX8-01	8	47.4	14.8	14.4	7	R1/8	14	18.5	3.2		
PPX8-02	8	49.9	14.8	14.4	9.5	R1/4	14	18.5	3.2		
PPX8-03	8	50.9	14.8	14.4	10.5	R3/8	17	18.5	3.2		
PPX8-04	8	54.9	14.8	14.4	13	R1/2	21	18.5	3.2	17	19.5
PPX10-01	10	56.9	18.4	18.4	7	R1/8	17	21	4.2		
PPX10-02	10	59.3	18.4	18.4	9.5	R1/4	17	21	4.2		
PPX10-03	10	60.3	18.4	18.4	10.5	R3/8	17	21	4.2		
PPX10-04	10	64.4	18.4	18.4	13	R1/2	21	21	4.2	20.5	23
PPX12-02	12	62.7	20.5	20	9.5	R1/4	19	22.5	4.2		
PPX12-03	12	63.7	20.5	20	10.5	R3/8	19	22.5	4.2		
PPX12-04	12	67.2	20.5	20	13	R1/2	21	22.5	4.2		

PPY Y型三通



型号	3-ØD	B	ØP	E	F	Ød	X	Y
PPY4	4	36.5	10.5	10.5	13.5	3.2	10	11.5
PPY6	6	38.4	13	13	14.5	3.2	12.5	14
PPY8	8	41	14.8	14.5	18.5	3.2	14	15.8
PPY10	10	51.5	18.4	18.5	21	4.2	17	19.5
PPY12	12	54.2	20.5	20	22.5	4.2	20.5	23
PPY14	14	58.5	25.5	26	26	4.8	23.2	26
PPY16	16	58.7	25.5	26	25	4.8	21	23.2

PPYW Y型变径三通



型号	ØD1	2-ØD2	B	ØP1	2-ØP2	E	F	Ød	X ₁	Y ₁	X ₂	Y ₂
PPYW6-4	6	4	37.5	13	10.5	10.8	13.5	3.2	10	11.5	12.5	14
PPYW8-6	8	6	40.2	14.4	13	13.4	14.5	3.2	12.5	14	14	15.8
PPYW10-8	10	8	46.2	18.4	14.4	14.8	18.5	3.2	14	15.8	17	19.5
PPYW12-10	12	10	52.8	20	18.4	18.4	21	4.2	17	19.5	20.5	23

气源处理元件

控制元件

真空元件

检测元件

辅助元件