

B2M-free HLA-G/aAPC Cell

CBP74190

Contents

I. Background.....	1
II. Introduction.....	1
III. Representative Data.....	1



B2M-free HLA-G/aAPC Cell CBP74190

I. Background

N/A

II. Introduction

Host Cell: N/A

Stability: 32 passages (in-house test, that not means the cell line will be instable beyond the passages we tested.)

Culture Medium:



Mycoplasma Testing: Negative

Storage: Liquid nitrogen

Application(s): Functional(Report Gene) Assay

III. Representative Data



	Population Name	Mean , FL4-A
	B2M-free HLA-G / aAPC cell+anti-HLA-G	1.83E4
	Control cell+anti-HLA-G	549

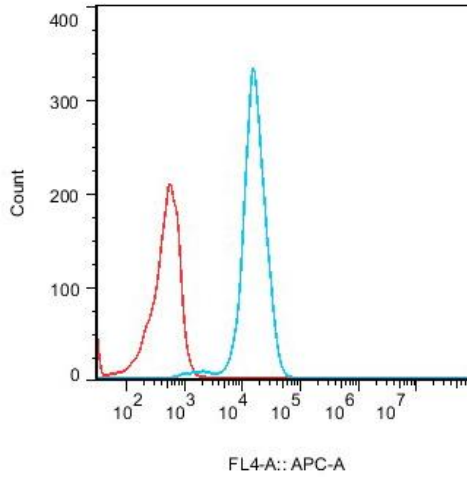


Figure 1. Recombinant B2M-free HLA-G/aAPC Cell stably expressing HLA-G.

Dose Response of LILRB2 Blocking Antibody in LILRB2 Effector Reporter Cells (C24) With B2M-free HLA-G/aAPC Cells

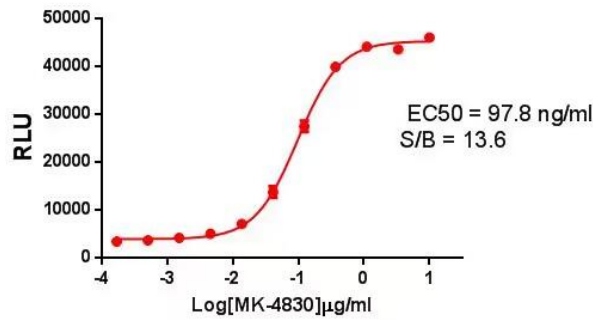


Figure 2. Dose Response of LILRB2 Blocking Antibody in LILRB2 Effector Reporter Cells (C24) With B2M-free HLA-G/aAPC Cells.

