

B2M-associated HLA-G/aAPC Cell

CBP74189

Contents

| | |
|-------------------------------|---|
| I. Background..... | 1 |
| II. Introduction..... | 1 |
| III. Representative Data..... | 1 |



B2M-associated HLA-G/aAPC Cell CBP74189

I. Background

N/A

II. Introduction

Host Cell: N/A

Stability: 32 passages (in-house test, that not means the cell line will be instable beyond the passages we tested.)

Culture Medium: N/A



Mycoplasma Testing: Negative

Storage: Liquid nitrogen

Application(s): Functional(Report Gene) Assay

III. Representative Data



| | Population Name | Mean , FL2-A |
|---|---|--------------|
|  | B2M-associated HLA-G / aAPC Cell+anti-B2M | 8.64E5 |
|  | Control Cell+anti-B2M | 826 |

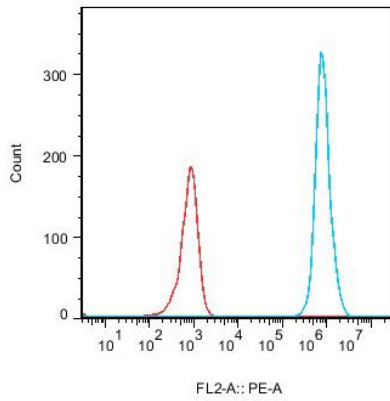




Figure 1. Recombinant B2M-associated HLA-G/aAPC Cell stably expressing B2M.

| | Population Name | Mean , FL4-A |
|---|---|--------------|
|  | B2M-associated HLA-G / aAPC cell+anti-HLA-G | 9850 |
|  | Control cell+anti-HLA-G | 316 |

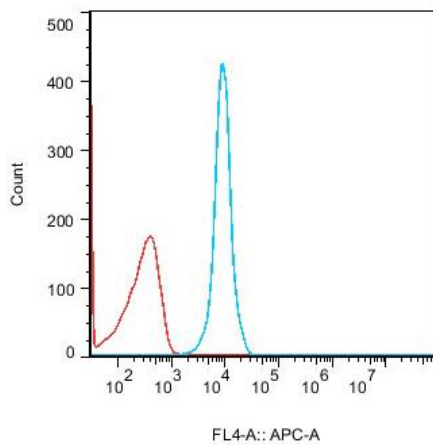


Figure 2. Recombinant B2M-associated HLA-G/aAPC Cell stably expressing HLA-G.



Dose Response of LILRB1 Blocking Antibody in LILRB1 Effector Reporter Cells (C13) With B2M-associated HLA-G/aAPC Cells (C15)

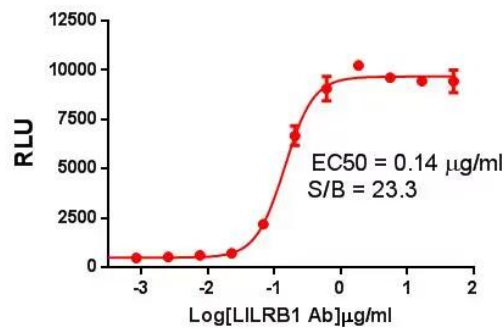


Figure 3. Dose Response of LILRB1 Blocking Antibody in LILRB1 Effector Reporter Cells (C13) With B2M-associated HLA-G/aAPC Cells (C15).

Dose Response of LILRB2 Blocking Antibody in LILRB2 Effector Reporter Cells (C24) With B2M-associated HLA-G/ aAPC Cells (C15)

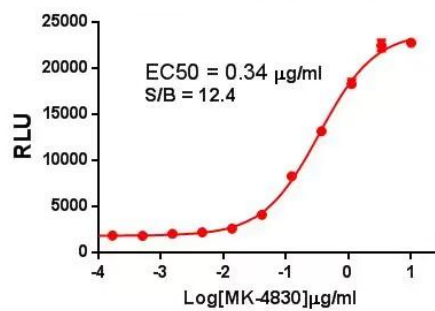


Figure 4. Dose Response of LILRB2 Blocking Antibody in LILRB2 Effector Reporter Cells (C24) With B2M-associated HLA-G/aAPC Cells(C15).

