

# **hGDF/GFRAL&RET Effector Reporter Cell**

## **CBP74186**

### **Contents**

I. Background.....	1
II. Introduction.....	1
III. Representative Data.....	1



# **hGDF/GFRAL&RET Effector Reporter Cell CBP74186**

## **I. Background**

N/A

## **II. Introduction**

Host Cell: N/A

Stability: 32 passages (in-house test, that not means the cell line will be instable beyond the passages we tested.)

Culture Medium: DMEM+10%FBS+2ug/ml puromycin+200ug/ml hygromycin+10ug/ml blasticidin



Mycoplasma Testing: Negative

Storage: Liquid nitrogen

Application(s): Functional(Report Gene) Assay

## **III. Representative Data**



	Population Name	Mean , FL4-A
	GFRAL&RET Effector Reporter cell+anti-GFRAL	8.39E4
	Control Cell+anti-GFRAL	5481

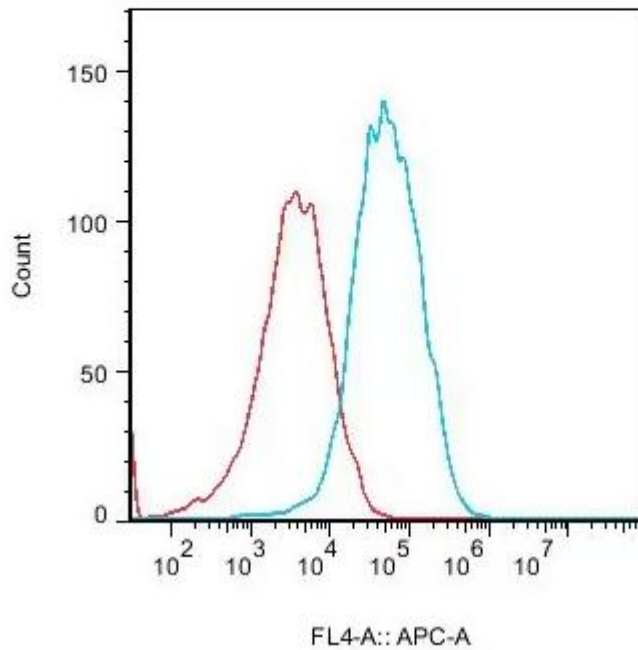




Figure 1. Recombinant hGDF/GFRAL&RET Effector Reporter Cell constitutively expressing GFRAL.



	Population Name	Mean , FL4-A
	GFRAL & Ret Effector Cell+anti-RET	1.44E4
	Control Cell+anti-Ret	1866

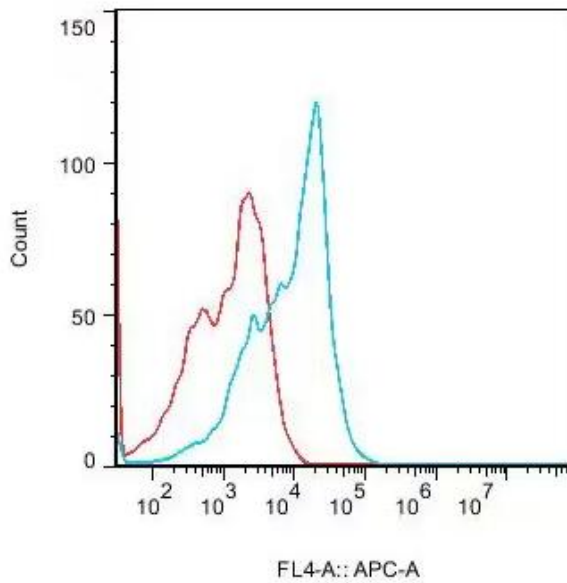


Figure 2. Recombinant hGDF/GFRAL&RET Effector Reporter Cell constitutively expressing RET.

Dose Response of Recombinant Human GDF-15 in hGDF/GFRAL&RET Effector Reporter Cells (C1)

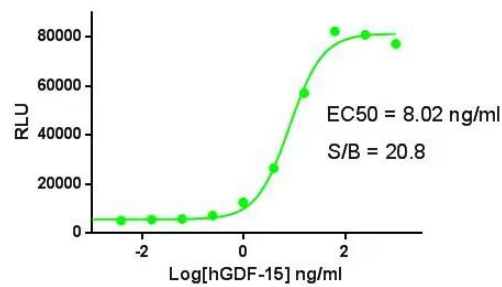


Figure 3. Dose Response of Recombinant Human GDF-15 in hGDF/GFRAL&RET Effector Reporter Cells (C1).



Inhibition of hGDF-15-induced Reporter Activity by hGDF-15 Neutralization Ab in GDF-15/hGFRAL&Ret Effector Reporter Cells (Clone1)

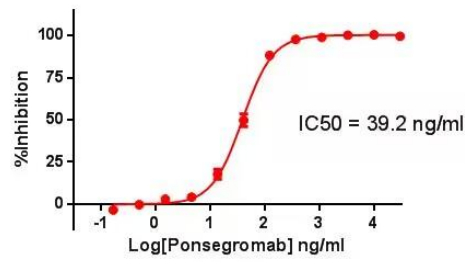


Figure 4. Inhibition of hGDF-15-induced Reporter Activity by hGDF-15 Neutralization Ab in GDF-15/hGFRAL&Ret Effector Reporter Cell (Clone1).

