

CLDN6/CHO

CBP74181

Contents

I. Background.....	1
II. Introduction.....	1
III. Description of Host Cell Line.....	1
IV. Representative Data.....	2



CLDN6/CHO

CBP74181

I. Background

CLDN6 (Claudin 6) is a Protein Coding gene. Diseases associated with CLDN6 include Hepatitis C Virus and Hepatitis C.

II. Introduction

Host Cell: CHO

Expressed gene: CLDN6

Stability: 32 passages (in-house test, that not means the cell line will be instable beyond the passages we tested.)

Culture Medium: F12K+10%FBS+5ug/ml puromycin

Storage: Liquid nitrogen

Application(s): Binding Assay,FACS

III. Description of Host Cell Line

Organism: Hamster

Tissue: Ovary



Disease: Hamster Chinese ovary

Morphology: Epithelial



Growth Properties: Adherent

IV. Representative Data

	Population Name	Mean FL4-A
	CHO-CLDN6-C21+anti-CLDN6 APC	1.40E6
	CHO+anti-CLND6 APC	5453

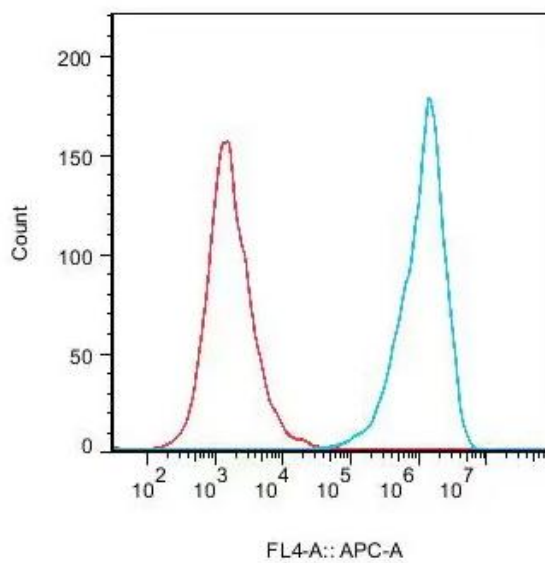


Figure 1.Recombinant CLDN6/CHO constitutively expressing CLDN6.

