

BTLA Effector Reporter Cell

CBP74118

Contents

I. Background.....	1
II. Introduction.....	1
III. Representative Data.....	1



BTLA Effector Reporter Cell CBP74118

I. Background

BTLA is a glycoprotein containing immunoglobulin domains, which is expressed on T cells, dormant B cells, macrophages, dendritic cells and a small number of NK cells.

II. Introduction

Expressed gene: BTLA

Stability: 32 passages (in-house test, that not means the cell line will be instable beyond the passages we tested.)

Synonym(s): BTLA

Freeze Medium: 90% FBS+10% DMSO

Culture Medium: RPMI-1640+10%FBS+1ug/ml puromycin+800ug/ml
hygromycin

Mycoplasma Testing: Negative

Storage: Liquid nitrogen

III. Representative Data



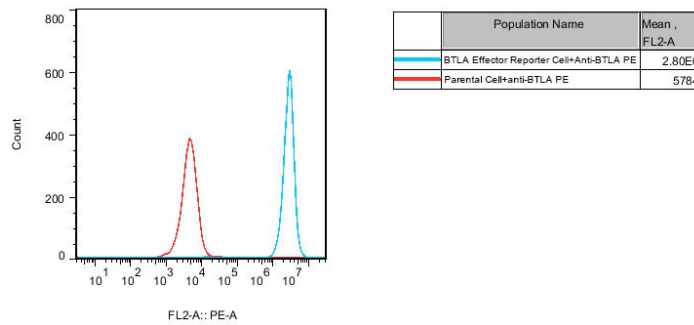


Figure 1. Recombinant BTLA Effector Reporter Cell constitutively expressing BTLA.

Dose Response of BTLA Blocking Antibody in BTLA Effector Reporter Cells (Clone 1) With HVEM / TCR Activator - CHO Cells

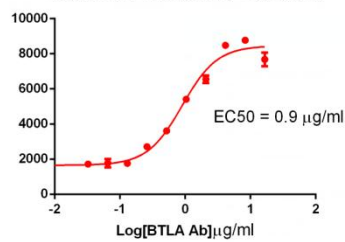


Figure 2. Dose Response of BTLA Blocking Antibody in BTLA Effector Reporter Cells (Clone 1) With HVEM/ TCR Activator - CHO Cells.

Dose Response of HVEM Blocking Antibody in BTLA Effector Reporter Cells (Clone 1) With HVEM / TCR Activator - CHO Cells

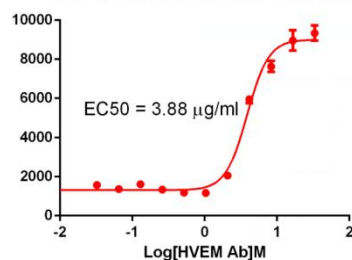


Figure 3. Dose Response of HVEM Blocking Antibody in BTLA Effector



Reporter Cells (Clone 1) With HVEM/TCR Activator - CHO Cells.

Dose Response of BTLA Agonist Abs in BTLA Effector Reporter Cells With FC γ R aAPC Cells

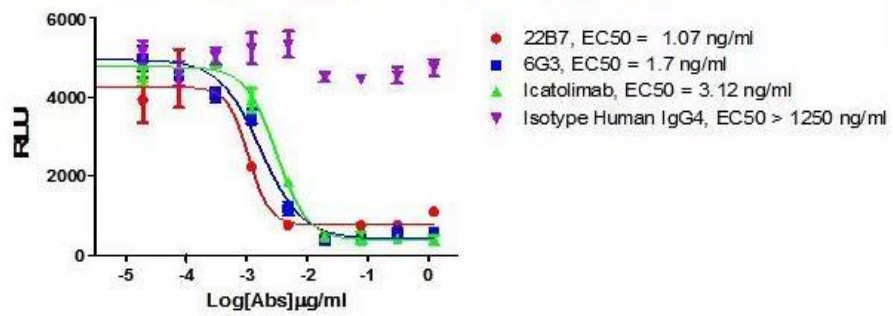


Figure 4. Dose Response of BTLA Agonist Abs in BTLA Effector Reporter Cells With FC γ R aAPC Cells.

