

# TPOR(Ligand Dependent)/BaF3

## CBP73266

### Contents

I. Introduction.....	1
II. Background.....	1
III. Representative Data.....	2
1. WB of TPOR(Ligand Dependent)/BaF3.....	2
2. Anti-proliferation assay .....	2
IV. Handling Procedure for Flask Cultures.....	3
V. Subculturing Procedure.....	4
VI. Cryopreservation Procedure.....	4
VII. Performing the Anti-proliferation Assay.....	4
1. Materials to Be Supplied by the User.....	4
2. Protocol for the Cell Viability Assay.....	5
VIII. References.....	6



# TPOR(Ligand Dependent)/BaF3

## CBP73266

### I. Introduction

Cell Line Name: TPOR(Ligand Dependent)/BaF3

Gene Synonyms: TPOR

Host Cell: Ba/F3

Stability: 16 passages (in-house test, that not means the cell line will be instable beyond the passages we tested.)

Application: Anti-proliferation assay and PD assay

Freeze Medium: 90% FBS+10% DMSO

Complete Culture Medium: RPMI-1640+10%FBS+2ug/ml puromycin+500nM Eltrombopag

Mycoplasma Status: Negative

### II. Background

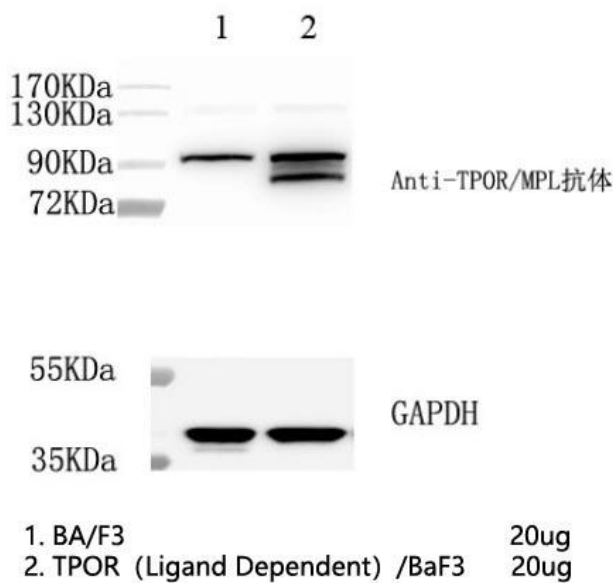
In 1990 an oncogene, v-mpl, was identified from the murine myeloproliferative leukemia virus that was capable of immortalizing bone marrow hematopoietic cells from different lineages. In 1992 the human homologue, named, c-mpl, was cloned. Sequence data revealed that c-mpl encoded a protein that was homologous with members of the hematopoietic receptor superfamily. Presence of anti-sense oligodeoxynucleotides of c-mpl inhibited megakaryocyte colony formation. The ligand for c-mpl, thrombopoietin, was cloned in 1994. Thrombopoietin was shown to be the major regulator of megakaryocytopoiesis and platelet formation. The protein encoded by the



c-mpl gene, CD110, is a 635 amino acid transmembrane domain, with two extracellular cytokine receptor domains and two intracellular cytokine receptor box motifs . TPO-R deficient mice were severely thrombocytopenic, emphasizing the important role of CD110 and thrombopoietin in megakaryocyte and platelet formation. Upon binding of thrombopoietin CD110 is dimerized and the JAK family of non-receptor tyrosine kinases, as well as the STAT family, the MAPK family, the adaptor protein Shc and the receptors themselves become tyrosine phosphorylated.

### III. Representative Data

#### 1. WB of TPOR(Ligand Dependent)/BaF3



#### 2. Anti-proliferation assay



### CTG Proliferation Assay of BaF3 TPOR Cells (C3)

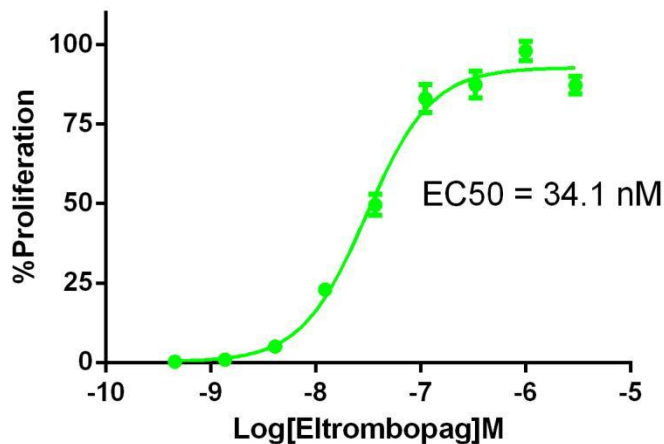


Figure 2. CTG Proliferation Assay of BaF3 TPOR Cells (C3), the EC50=34.1nM.

#### IV. Handling Procedure for Flask Cultures

The flask was seeded with cells grown and completely filled with medium at Cobioer.

1. Upon receipt visually examine the culture for macroscopic evidence of any microbial contamination.

Using an inverted microscope (preferably equipped with phasecontrast optics), carefully check for any evidence of microbial contamination.

2. Incubate the flask in an upright position for several hours at 37°C.

After the temperature has equilibrated, aseptically remove the entire contents of the flask and centrifuge at 1000 rpm for 5 minutes. Remove shipping medium and save for reuse. Resuspend the cell pellet in 10 ml of this medium.

3. From this cell suspension remove a sample for a cell count and viability. Adjust the cell density of the suspension to  $3 \times 10^5$  viable cells/ml in the shipping medium.

4. Incubate the culture, horizontally at 37°C in a 5% CO<sub>2</sub> in air



atmosphere. Maintain the cell density of the culture as suggested under the subculture procedure.

## **V. Subculturing Procedure**

Cultures can be maintained by the addition of fresh medium or replacement of medium. Alternatively, cultures can be established by centrifugation with subsequent resuspension at  $3 \times 10^5$  viable cells/mL. Do not allow the cell density to exceed  $2 \times 10^6$  cells/mL.

Interval: Maintain cultures at a cell concentration between  $3 \times 10^5$  and  $2 \times 10^6$  viable cells/mL.

Medium Renewal: Add fresh medium every 2 to 3 days (depending on cell density)

## **VI. Cryopreservation Procedure**

1. Transfer cell suspension ( $4-8 \times 10^6$  cells) to a centrifuge tube and spin at approximately 1000rpm for 5 minutes.
2. Discard supernatant and resuspend cells in cryopreservation medium (90% FBS+10%DMSO).
3. Transfer the cells into Freezing Tube, 1ml/vial.
4. Place Freezing Tube in a Frosty container that is kept at room temperature and has sufficient isopropanol.
5. Place the Frosty container into the  $-80^\circ\text{C}$  freezer overnight.
6. On next day, transfer the vials into liquid nitrogen.

## **VII. Performing the Anti-proliferation Assay**

1. Materials to Be Supplied by the User
  - Compounds to be tested



- RPMI-1640 (Gibco #C11875500CP)
- FBS (Gibco #10099-141C )
- DMSO
- CellTiter-Glo® Luminescent Cell Viability Assay (Promega, Cat.No.: G7573)
- 96 Well Assay Plate (White Plate, Clear Bottom with Lid Tissue Culture Treated Polystyrene 1/Pack, Corning #3610)
- T25 Flask
- 96 Well Storage Microplate( Corning#3357)
- Synergy H1 Hybrid Multi-Mode Reader(Biotek)

## 2. Protocol for the Anti-proliferation Assay

- 1) Take logarithmic growth cells, centrifuge and discard the culture supernatant, resuspend the centrifuged cells in fresh RPMI-1640+10%FBS medium.
- 2) Inoculate the resuspended cells into a 96-well cell culture plate with a white wall and transparent bottom, 100ul/well of cell suspension, inoculate two culture plates, and place in a 37°C cell incubator for overnight culture.
- 3) The next day, take one of the 96-well plates inoculated with cells, add 100ul/well cell titer glo detection reagent and leave it for 60 minutes, read the value, and define it as G0 data.
- 4) Take another parallel plate, and take 11.1 ul/well of compound from the previously diluted 10\*compound concentration dilution plate to this plate , And set up another DMSO control well, continue to incubate in a 37°C cell incubator for 72 hours.
- 5) Take out the 96-well plate that has been treated with the compound for 72 hours from the incubator, add 100ul/well cell titer glo detection



reagent and leave it for 60 minutes, read the value, and define it as G3 data.

6) Calculate the cell proliferation rate corresponding to each well according to the following formula %Proliferation = (Test compound well G3-G0 average value) / (DMSO control well G3 average value-G0 average value)\*100.

7) According to the corresponding proliferation rate and concentration of each gradient concentration hole, use Prism Graphpad5.0 software to fit the gradient curve of cell proliferation, and calculate the GI50 of the compound (GI50 is defined as the corresponding compound concentration when the cell proliferation rate is 50% , The fitting formula in the software is as follows:  $Y=Bottom + (Top-Bottom)/(1+10^{((LogIC50-X)*HillSlope)})$ ).

## VIII. References

1. Mpl Baltimore: a thrombopoietin receptor polymorphism associated with thrombocytosis. (PMID: 15269348) Moliterno AR ... Spivak JL Proceedings of the National Academy of Sciences of the United States of America 2004
2. MPLW515L is a novel somatic activating mutation in myelofibrosis with myeloid metaplasia. (PMID: 16834459) Pikman Y ... Levine RL PLoS medicine 2006
3. MPL515 mutations in myeloproliferative and other myeloid disorders: a study of 1182 patients. (PMID: 16868251) Pardanani AD ... Tefferi A Blood 2006
4. The thrombopoietin receptor P106L mutation functionally separates receptor signaling activity from thrombopoietin homeostasis. (PMID:



25538044) Stockklausner C ··· Kulozik AE Blood 2015

5. Screening for MPL mutations in essential thrombocythemia and primary myelofibrosis: normal Mpl expression and absence of constitutive STAT3 and STAT5 activation in MPLW515L-positive platelets. (PMID: 20113333) Glembotsky AC ··· Heller PG European journal of haematology 2010

