

Her2 A775_G776insYVMA/BaF3

CBP73184

Contents

I. Introduction.....	1
II. Background.....	1
III. Representative Data.....	1
1. WB of Her2 A775_G776insYVMA/BaF3	1
2. Anti-proliferation assay	2
IV. Handling Procedure for Flask Cultures.....	2
V. Subculturing Procedure.....	3
VI. Cryopreservation Procedure.....	3
VII. Performing the Anti-proliferation Assay.....	4
1. Materials to Be Supplied by the User.....	4
2. Protocol for the Cell Viability Assay.....	4
VIII. References.....	6



Her2 A775_G776insYVMA/BaF3

CBP73184

I. Introduction

Cell Line Name: Her2 A775_G776insYVMA/BaF3

Host Cell: Ba/F3

Stability: 16 passages (in-house test, that not means the cell line will be instable beyond the passages we tested.)

Application: Anti-proliferation assay and PD assay

Freeze Medium: 90% FBS+10% DMSO

Complete Culture Medium: RPMI-1640+10%FBS

Mycoplasma Status: Negative

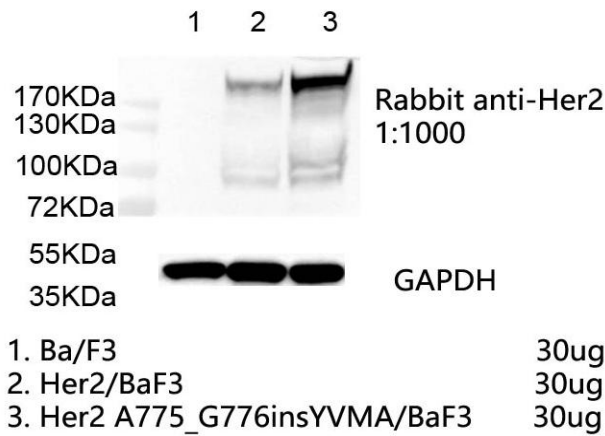
II. Background

ERBB2 (HER2) A775_G776insYVMA results in the insertion of four amino acids in the protein kinase domain of the Erbb2 (Her2) protein between amino acids 775 and 776 (UniProt.org). A775_G776insYVMA results in the same amino acid change as M774_A775insAYVM, which leads to constitutive phosphorylation of Erbb2 (Her2) and is transforming in cell culture (PMID: 17311002, PMID: 29967253).

III. Representative Data

1. WB of Her2 A775_G776insYVMA/BaF3





2. Anti-proliferation assay

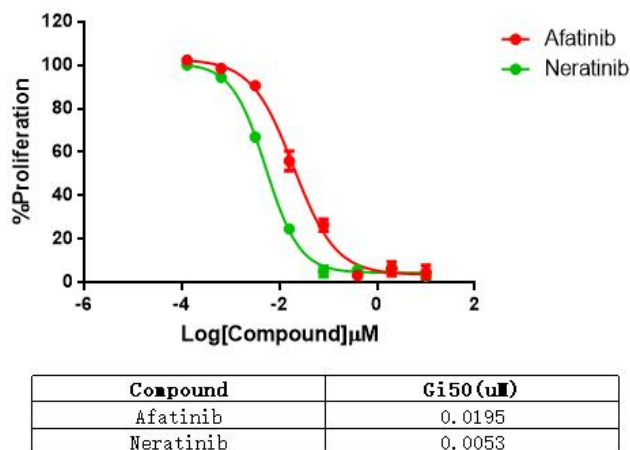


Figure 2. Anti-proliferation assay of two reference compounds on the Her2 A775_G776insYVMA/BaF3 Stable Cell Line.

IV. Handling Procedure for Flask Cultures

The flask was seeded with cells grown and completely filled with medium at Cobioer.

1. Upon receipt visually examine the culture for macroscopic evidence of any microbial contamination.

Using an inverted microscope (preferably equipped with phasecontrast



- optics), carefully check for any evidence of microbial contamination.
2. Incubate the flask in an upright position for several hours at 37°C. After the temperature has equilibrated, aseptically remove the entire contents of the flask and centrifuge at 1000 rpm for 5 minutes. Remove shipping medium and save for reuse. Resuspend the cell pellet in 10 ml of this medium.
 3. From this cell suspension remove a sample for a cell count and viability. Adjust the cell density of the suspension to 3×10^5 viable cells/ml in the shipping medium.
 4. Incubate the culture, horizontally at 37°C in a 5% CO₂ in air atmosphere. Maintain the cell density of the culture as suggested under the subculture procedure.

V. Subculturing Procedure

Cultures can be maintained by the addition of fresh medium or replacement of medium. Alternatively, cultures can be established by centrifugation with subsequent resuspension at 3×10^5 viable cells/mL. Do not allow the cell density to exceed 2×10^6 cells/mL.

Interval: Maintain cultures at a cell concentration between 3×10^5 and 2×10^6 viable cells/mL.

Medium Renewal: Add fresh medium every 2 to 3 days (depending on cell density)

VI. Cryopreservation Procedure

1. Transfer cell suspension ($4-8 \times 10^6$ cells) to a centrifuge tube and spin at approximately 1000rpm for 5 minutes.



2. Discard supernatant and resuspend cells in cryopreservation medium(90% FBS+10%DMSO).
3. Transfer the cells into Freezing Tube, 1ml/vial.
4. Place Freezing Tube in a Frosty container that is kept at room temperature and has sufficient isopropanol.
5. Place the Frosty container into the -80°C freezer overnight.
6. On next day, transfer the vials into liquid nitrogen.

VII. Performing the Anti-proliferation Assay

1. Materials to Be Supplied by the User

- Compounds to be tested
- RPMI-1640 (Gibco #C11875500CP)
- FBS (Gibco #10099-141C)
- DMSO
- CellTiter-Glo® Luminescent Cell Viability Assay (Promega, Cat.No.: G7573)
- 96 Well Assay Plate (White Plate, Clear Bottom with Lid Tissue Culture Treated Polystyrene 1/Pack, Corning #3610)
- T25 Flask
- 96 Well Storage Microplate(Corning#3357)
- Synergy H1 Hybrid Multi-Mode Reader(Biotek)

2. Protocol for the Anti-proliferation Assay

- 1) Take logarithmic growth cells, centrifuge and discard the culture supernatant, resuspend the centrifuged cells in fresh RPMI-1640+10%FBS medium.
- 2) Inoculate the resuspended cells into a 96-well cell culture plate with a



white wall and transparent bottom, 100ul/well of cell suspension, inoculate two culture plates, and place in a 37°C cell incubator for overnight culture.

3) The next day, take one of the 96-well plates inoculated with cells, add 100ul/well cell titer glo detection reagent and leave it for 60 minutes, read the value, and define it as G0 data.

4) Take another parallel plate, and take 11.1 ul/well of compound from the previously diluted 10*compound concentration dilution plate to this plate , And set up another DMSO control well, continue to incubate in a 37°C cell incubator for 72 hours.

5) Take out the 96-well plate that has been treated with the compound for 72 hours from the incubator, add 100ul/well cell titer glo detection reagent and leave it for 60 minutes, read the value, and define it as G3 data.

6) Calculate the cell proliferation rate corresponding to each well according to the following formula %Proliferation = (Test compound well G3-G0 average value) / (DMSO control well G3 average value-G0 average value)*100.

7) According to the corresponding proliferation rate and concentration of each gradient concentration hole, use Prism Graphpad5.0 software to fit the gradient curve of cell proliferation, and calculate the GI50 of the compound (GI50 is defined as the corresponding compound concentration when the cell proliferation rate is 50% , The fitting formula in the software is as follows: $Y=Bottom + (Top-Bottom)/(1+10^{((LogIC50-X)*HillSlope)})$).



VIII. References

1. Association between HER2, TOP2A, and response to anthracycline-based preoperative chemotherapy in high-risk primary breast cancer. (PMID: 20130985) Konecny GE ··· Slamon DJ Breast cancer research and treatment 2010
2. The Val allele of HER-2 codon 655 predicts the progression of oral squamous cell carcinoma. (PMID: 18849186) Wu CH ··· Kao SY Oral oncology 2009
3. ErbB2-mediated Src and signal transducer and activator of transcription 3 activation leads to transcriptional up-regulation of p21Cip1 and chemoresistance in breast cancer cells. (PMID: 19372587) Hawthorne VS ··· Yu D Molecular cancer research : MCR 2009
4. Outcome of patients with early-stage breast cancer treated with doxorubicin-based adjuvant chemotherapy as a function of HER2 and TOP2A status. (PMID: 19620488) Tubbs R ··· Hayes DF Journal of clinical oncology : official journal of the American Society of Clinical Oncology 2009
5. Topoisomerase II alpha and responsiveness of breast cancer to adjuvant chemotherapy. (PMID: 19401546) O'Malley FP ··· Pritchard KI Journal of the National Cancer Institute 2009

