

FLT3-ITD/BaF3

CBP73096

Contents

I. Introduction.....	1
II. Background.....	1
III. Representative Data.....	1
1. WB of FLT3-ITD/BaF3	1
2. Anti-proliferation assay	2
IV. Handling Procedure for Flask Cultures.....	2
V. Subculturing Procedure.....	3
VI. Cryopreservation Procedure.....	3
VII. Performing the Anti-proliferation Assay.....	4
1. Materials to Be Supplied by the User.....	4
2. Protocol for the Cell Viability Assay.....	4
VIII. References.....	5



FLT3-ITD/BaF3

CBP73096

I. Introduction

Cell Line Name: FLT3-ITD/BaF3

Host Cell: Ba/F3

Stability: 16 passages (in-house test, that not means the cell line will be instable beyond the passages we tested.)

Application: Useful for the study of enzyme kinetics, screening inhibitors, and selectivity profiling.

Freeze Medium: 90% FBS+10% DMSO

Complete Culture Medium: RPMI-1640+10%FBS

Mycoplasma Status: Negative

II. Background

FLT3, receptor-type tyrosine-protein kinase FLT3, activates Akt, Ras, and Erk pathways to regulate differentiation, proliferation, and survival of hematopoietic progenitor cells (PMID: 29316714, PMID: 28538663).

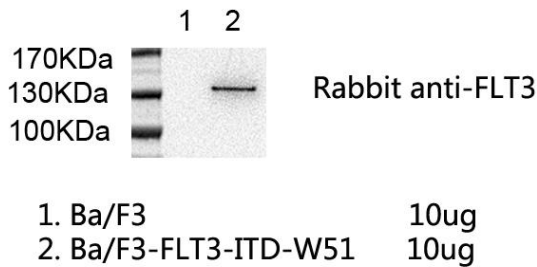
Activating mutations of FLT3 are common in hematologic tumors (PMID: 19467916) and the internal tandem duplication (ITD) mutation is commonly observed in acute myeloid leukemia (PMID: 30181385).

III. Representative Data

1.WB of FLT3-ITD/BaF3



Ba/F3-FLT3-ITD-W51



2. Anti-proliferation assay

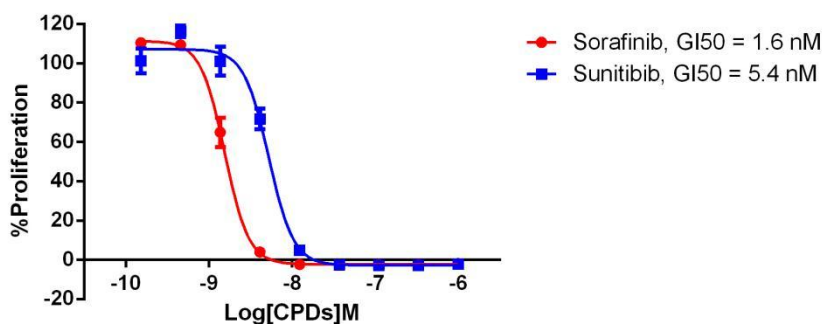


Figure 2. Anti-proliferation assay of three reference compounds on the FLT3-ITD/BaF3 Stable Cell Line.

IV. Handling Procedure for Flask Cultures

The flask was seeded with cells grown and completely filled with medium at Cobioer.

1. Upon receipt visually examine the culture for macroscopic evidence of any microbial contamination.

Using an inverted microscope (preferably equipped with phasecontrast optics), carefully check for any evidence of microbial contamination.

2. Incubate the flask in an upright position for several hours at 37°C.

After the temperature has equilibrated, aseptically remove the entire contents of the flask and centrifuge at 1000 rpm for 5 minutes. Remove shipping medium and save for reuse. Resuspend the cell pellet in 10 ml of



this medium.

3. From this cell suspension remove a sample for a cell count and viability. Adjust the cell density of the suspension to 3×10^5 viable cells/ml in the shipping medium.
4. Incubate the culture, horizontally at 37°C in a 5% CO_2 in air atmosphere. Maintain the cell density of the culture as suggested under the subculture procedure.

V. Subculturing Procedure

Cultures can be maintained by the addition of fresh medium or replacement of medium. Alternatively, cultures can be established by centrifugation with subsequent resuspension at 3×10^5 viable cells/mL. Do not allow the cell density to exceed 2×10^6 cells/mL.

Interval: Maintain cultures at a cell concentration between 3×10^5 and 2×10^6 viable cells/mL.

Medium Renewal: Add fresh medium every 2 to 3 days (depending on cell density)

VI. Cryopreservation Procedure

1. Transfer cell suspension ($4-8 \times 10^6$ cells) to a centrifuge tube and spin at approximately 1000rpm for 5 minutes.
2. Discard supernatant and resuspend cells in cryopreservation medium (90% FBS+10%DMSO).
3. Transfer the cells into Freezing Tube, 1ml/vial.
4. Place Freezing Tube in a Frosty container that is kept at room temperature and has sufficient isopropanol.



5. Place the Frosty container into the -80°C freezer overnight.
6. On next day, transfer the vials into liquid nitrogen.

VII. Performing the Anti-proliferation Assay

1. Materials to Be Supplied by the User

- Compounds to be tested
- RPMI-1640 (Gibco #C11875500CP)
- FBS (Gibco #10099-141C)
- DMSO
- CellTiter-Glo® Luminescent Cell Viability Assay (Promega, Cat.No.: G7573)
- 96 Well Assay Plate (White Plate, Clear Bottom with Lid Tissue Culture Treated Polystyrene 1/Pack, Corning #3610)
- T25 Flask
- 96 Well Storage Microplate(Corning#3357)
- Synergy H1 Hybrid Multi-Mode Reader(Biotek)

2. Protocol for the Anti-proliferation Assay

- 1) Take logarithmic growth cells, centrifuge and discard the culture supernatant, resuspend the centrifuged cells in fresh RPMI-1640+10%FBS medium.
- 2) Inoculate the resuspended cells into a 96-well cell culture plate with a white wall and transparent bottom, 100ul/well of cell suspension, inoculate two culture plates, and place in a 37°C cell incubator for overnight culture.
- 3) The next day, take one of the 96-well plates inoculated with cells, add 100ul/well cell titer glo detection reagent and leave it for 60 minutes,



read the value, and define it as G0 data.

4) Take another parallel plate, and take 11.1 ul/well of compound from the previously diluted 10*compound concentration dilution plate to this plate , And set up another DMSO control well, continue to incubate in a 37°C cell incubator for 72 hours.

5) Take out the 96-well plate that has been treated with the compound for 72 hours from the incubator, add 100ul/well cell titer glo detection reagent and leave it for 60 minutes, read the value, and define it as G3 data.

6) Calculate the cell proliferation rate corresponding to each well according to the following formula %Proliferation = (Test compound well G3-G0 average value) / (DMSO control well G3 average value-G0 average value)*100.

7) According to the corresponding proliferation rate and concentration of each gradient concentration hole, use Prism Graphpad5.0 software to fit the gradient curve of cell proliferation, and calculate the GI50 of the compound (GI50 is defined as the corresponding compound concentration when the cell proliferation rate is 50% , The fitting formula in the software is as follows: $Y=Bottom + (Top-Bottom)/(1+10^{((LogIC50-X)*HillSlope)})$).

VIII. References

1. Daver N, Schlenk RF, Russel NH, et al. Targeting FLT3 mutations in AML: review of current knowledge and evidence. *Leukemia*. 2019;33(2):299-312. doi:10.1038/s41375-018-0357-9
2. Cuervo-Sierra J, Jaime-Pérez JC, Martínez-Hernández RA, et al. Prevalence and clinical significance of FLT3 mutation status in acute



myeloid leukemia patients: a multicenter study. *Arch Med Res.*

2016;47(3):172 - 179. doi:10.1016/j.arcmed.2016.06.003

3. Murphy KM, Levis M, Hafez MJ, et al. Detection of FLT3 internal tandem duplication and D835 mutations by a multiplex polymerase chain reaction and capillary electrophoresis assay. *J Mol Diagn.*

2003;5(2):96-102. doi:10.1016/S1525-1578(10)60458-8

4. Yamamoto Y, Kiyoi H, Nakano Y, et al. Activating mutation of D835 within the activation loop of FLT3 in human hematologic malignancies.

Blood. 2001;97(8):2434-2439. doi:10.1182/blood.V97.8.2434

