

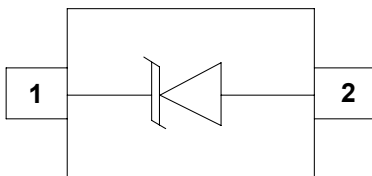
### Description

The AU0571D3 is an Uni-directional high power TVS diode, utilizing leading monolithic silicon technology to provide fast response time and low ESD clamping voltage, making this device an ideal solution for protecting voltage sensitive data and power line. The AU0571D3 complies with the IEC 61000-4-2 (ESD) with  $\pm 30\text{kV}$  air and  $\pm 30\text{kV}$  contact discharge. It is assembled into an ultra-small lead-free SOD-323 package. The small size and high ESD surge protection make AU0571D3 an ideal choice to protect cell phone, digital cameras, audio players and many other portable applications.

### Features

- Small SOD-323 package
- Protects one data or power line
- Operating Voltage: 5.0V
- High peak pulse current capability
- Ultra low clamping voltage
- Complies with following standards:
  - IEC 61000-4-2 (ESD) immunity test
    - Air discharge:  $\pm 30\text{kV}$
    - Contact discharge:  $\pm 30\text{kV}$
  - IEC61000-4-5 (Lightning) 120A (8/20 $\mu\text{s}$ )
- RoHS Compliant

### Dimensions and Pin Configuration



### **SOD-323 (Top View)**

Circuit Diagram

### Mechanical Characteristics

- Package: SOD-323
- Lead Finish: Matte Tin
- Case Material: "Green" Molding Compound.
- Terminal Connections: See Diagram Below
- Marking Information: See Below

### Applications

- Mobile Phones and Accessories
- Power Supply Protection
- Hand Held Portable Applications

### Marking Information



57D= Device Marking Code  
 Bar denotes Cathode

### Ordering Information

### Ordering Information

Part Number	Marking	Packaging	Reel Size
AU0571D3	57D	3000/Tape & Reel	7 inch

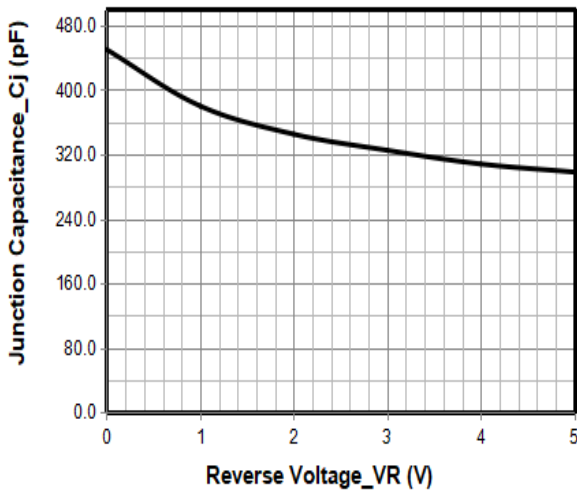
**Absolute Maximum Ratings ( $T_A=25^{\circ}\text{C}$  unless otherwise specified)**

Parameter	Symbol	Value	Unit
Peak Pulse Power (8/20 $\mu\text{s}$ )	Ppk	1800	W
Peak Pulse Current (8/20 $\mu\text{s}$ )	Ipp	120	A
ESD per IEC 61000-4-2 (Air)	VESD	$\pm 30$	kV
ESD per IEC 61000-4-2 (Contact)		$\pm 30$	
Operating Temperature Range	TJ	-55 to +125	$^{\circ}\text{C}$
Storage Temperature Range	Tstg	-55 to +150	$^{\circ}\text{C}$

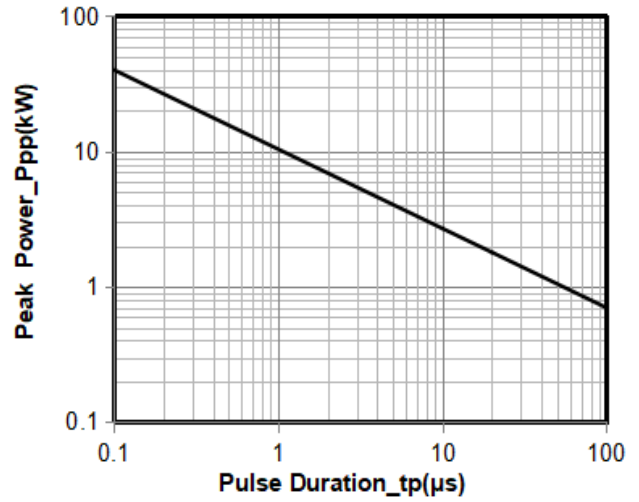
**Electrical Characteristics ( $T_A=25^{\circ}\text{C}$  unless otherwise specified)**

Parameter	Symbol	Min	Typ	Max	Unit	Test Condition
Reverse Working Voltage	VRWM			5.0	V	
Breakdown Voltage	VBR	6.0			V	IT = 1mA
Reverse Leakage Current	IR			1	$\mu\text{A}$	VRWM = 5V
Clamping Voltage	VC			9.5	V	IPP = 20A (8 x 20 $\mu\text{s}$ pulse)
Clamping Voltage	VC			15	V	IPP = 120A (8 x 20 $\mu\text{s}$ pulse)
Junction Capacitance	CJ		450		pF	VR = 0V, f = 1MHz

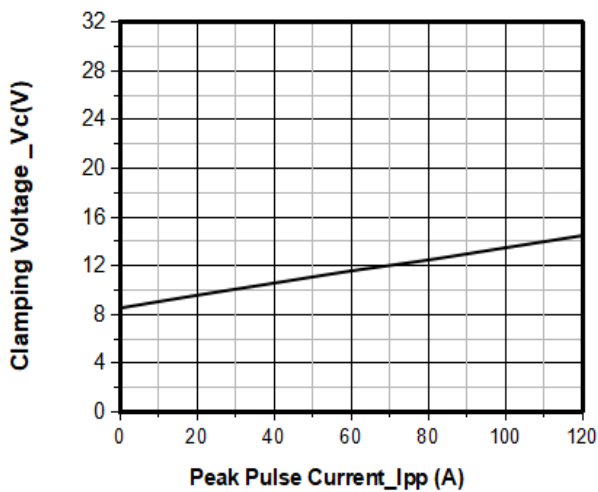
**Typical Performance Characteristics ( $T_A=25^\circ\text{C}$  unless otherwise Specified)**



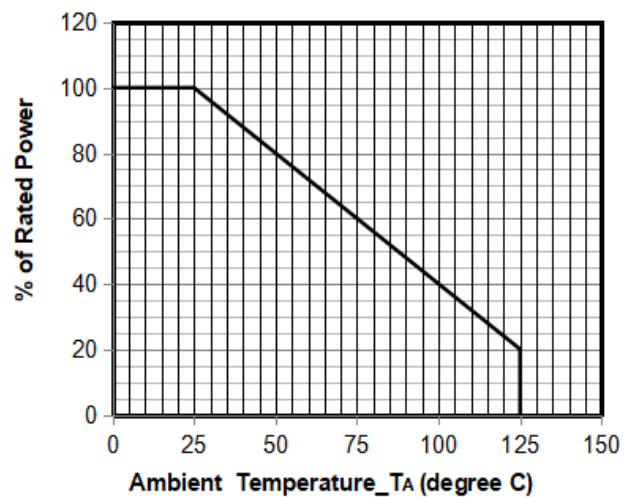
**Junction Capacitance vs. Reverse Voltage**



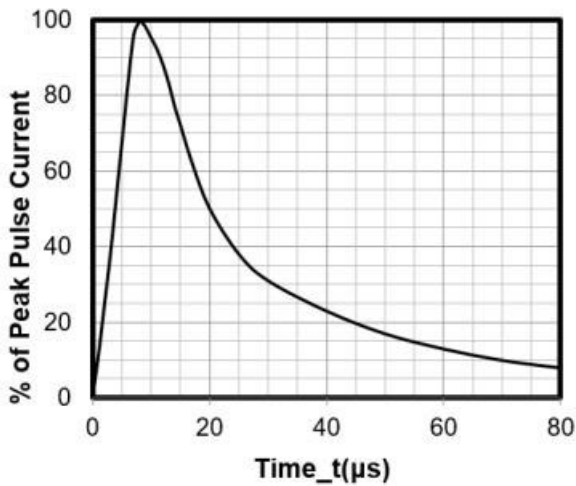
**Peak Pulse Power vs. Pulse Time**



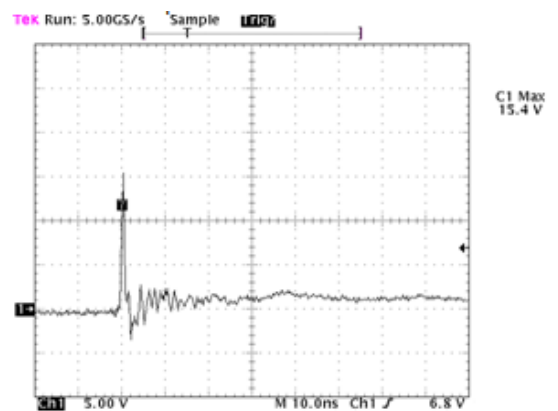
**Clamping Voltage vs. Peak Pulse Current ( $t_p = 8/20\mu\text{s}$ )**



**Power Derating Curve**



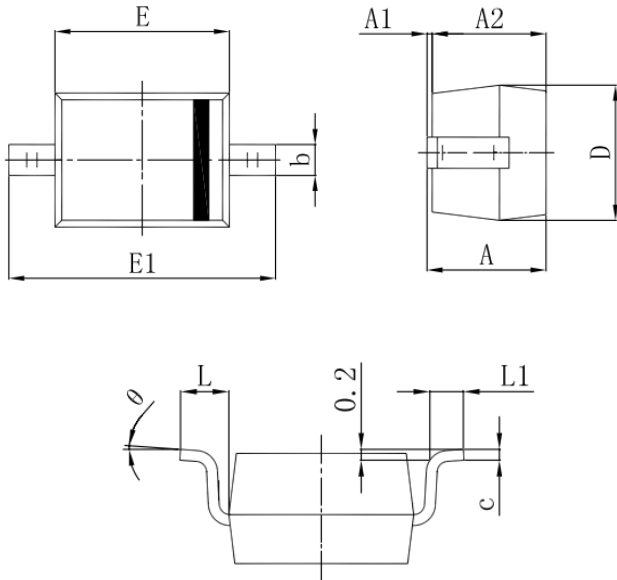
**8 X 20μs Pulse Waveform**



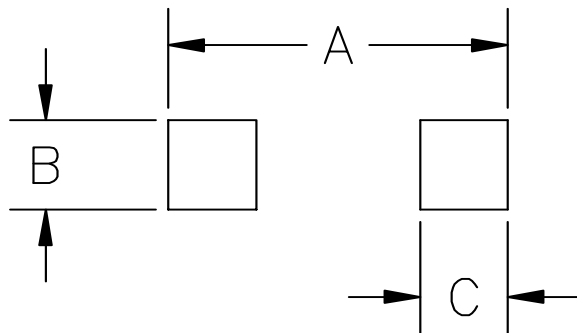
Note: Data is taken with a 10x attenuator

**ESD Clamping Voltage**

**8 kV Contact per IEC61000-4-2**

**SOD-323 Package Outline Drawing**


SYM	DIMENSIONS			
	MILLIMETERS		INCHES	
	MIN	MAX	MIN	MAX
A		1.00		0.039
A1	0.00	0.10	0.000	0.004
A2	0.80	0.90	0.031	0.035
b	0.25	0.35	0.010	0.014
c	0.08	0.15	0.003	0.006
D	1.20	1.40	0.047	0.055
E	1.60	1.80	0.063	0.071
E1	2.50	2.75	0.098	0.108
L	0.475REF		0.019REF	
L1	0.25	0.40	0.010	0.016
$\theta$	0°	8°	0°	8°

**Suggested Land Pattern**


SYM	DIMENSIONS	
	MILLIMETERS	INCHES
A	3.15	0.120
B	0.80	0.031
C	0.80	0.031

**Contact Information**

Applied Power Microelectronics Inc.

 Website: <http://www.appliedpowermicro.com>

 Email: [sales@appliedpowermicro.com](mailto:sales@appliedpowermicro.com)

Phone: +86 (0519) 8399 3606