

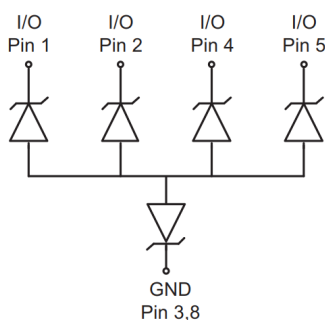
## Description

The AR0544P5LVA is an ultra low capacitance TVS array, utilizing leading monolithic silicon technology to provide fast response time and low ESD clamping voltage, making this device an ideal solution for protecting voltage sensitive high-speed data lines. The AR0544P5LVA has a low capacitance with a typical value at 0.7pF, and complies with the IEC 61000-4-2 (ESD) with  $\pm 25\text{kV}$  air and  $\pm 25\text{kV}$  contact discharge. It is assembled into a 10-pin 2.5x1.0x0.5mm lead-free DFN package. The flow through style package allows for easy PCB layout and matched trace lengths necessary to maintain consistent impedance between high speed differential lines such as USB3.2 gen2 and HDMI. The small size, ultra low capacitance and high ESD surge protection make AR0544P5LVA an ideal choice to protect HDMI 2.0/2.1, USB3.2 gen2, Thunderbolt3 and other high speed ports.

## Features

- low capacitance: 0.7pF typical
- Ultra low leakage: nA level
- Operating voltage: 5V
- Low clamping voltage
- Up to 4 lines protects
- Complies with following standards:
  - IEC 61000-4-2 (ESD) immunity test
    - Air discharge:  $\pm 25\text{kV}$
    - Contact discharge:  $\pm 25\text{kV}$
  - IEC61000-4-5 (Lightning) 2.5A (8/20 $\mu\text{s}$ )
- RoHS Compliant

## Equivalent Circuit and Pin Configuration



Circuit and Pin Schematic

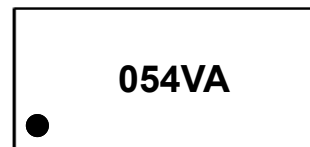
## Mechanical Characteristics

- Package: DFN2510-10 (2.5x1.0x0.5mm)
- Lead Finish: Matte Tin
- Case Material: "Green" Molding Compound.
- Terminal Connections: See Diagram Below
- Marking Information: See Below

## Applications

- HDMI 2.0/2.1, USB3.2 gen2 and Thunderbolt3
- Monitors and flat panel displays
- Set-top box and Digital TV
- Video graphics cards
- Digital Visual Interface (DVI)
- Notebook Computers
- PCI Express and Serial SATA Ports

## Marking Information



054VA= Device Marking Code

## Ordering Information

Part Number	Packaging	Reel Size
AR0544P5LVA	3000/Tape & Reel	7 inch

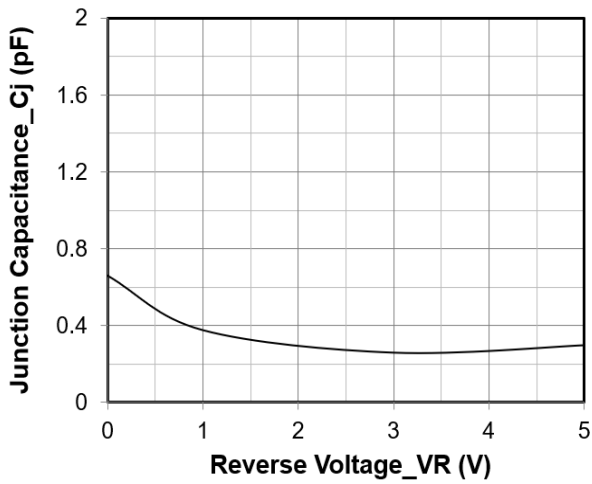
**Absolute Maximum Ratings ( $T_A=25^\circ\text{C}$  unless otherwise specified)**

Parameter	Symbol	Value	Unit
Peak Pulse Power (8/20 $\mu\text{s}$ )	Ppk	35	W
Peak Pulse Current (8/20 $\mu\text{s}$ )	I <sub>PP</sub>	2.5	A
ESD per IEC 61000-4-2 (Air) ESD per IEC 61000-4-2 (Contact)	V <sub>ESD</sub>	$\pm 25$ $\pm 25$	kV
Operating Temperature Range	T <sub>J</sub>	-55 to +125	$^\circ\text{C}$
Storage Temperature Range	T <sub>stg</sub>	-55 to +150	$^\circ\text{C}$

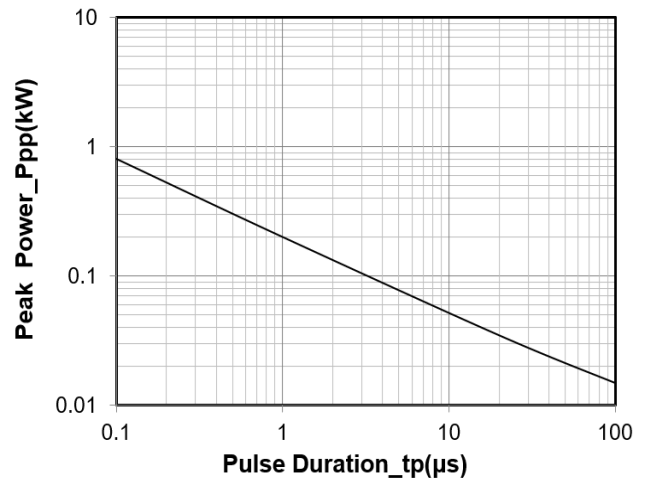
**Electrical Characteristics ( $T_A=25^\circ\text{C}$  unless otherwise specified)**

Parameter	Symbol	Min	Typ	Max	Unit	Test Condition
Reverse Working Voltage	V <sub>RWM</sub>			5	V	Any I/O pin to ground
Breakdown Voltage	V <sub>BR</sub>	6			V	I <sub>T</sub> = 1mA, any I/O pin to ground
Reverse Leakage Current	I <sub>R</sub>			0.5	$\mu\text{A}$	V <sub>RWM</sub> = 5V, any I/O pin to ground
Clamping Voltage	V <sub>C</sub>			14	V	I <sub>PP</sub> = 2.5A (8 x 20 $\mu\text{s}$ pulse), any I/O pin to ground
Junction Capacitance	C <sub>J</sub>		0.7		pF	V <sub>R</sub> = 0V, f = 1MHz, any I/O pin to ground

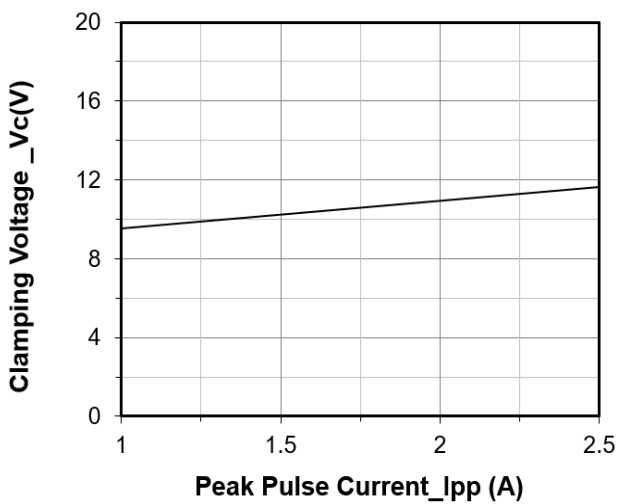
**Typical Performance Characteristics ( $T_A=25^\circ\text{C}$  unless otherwise Specified)**



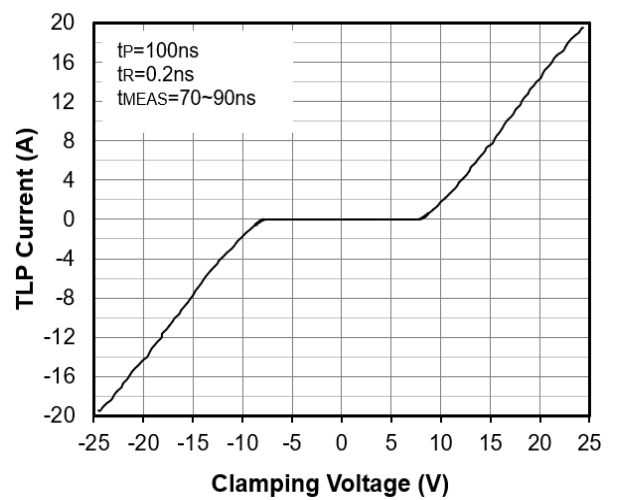
**Junction Capacitance vs. Reverse Voltage**



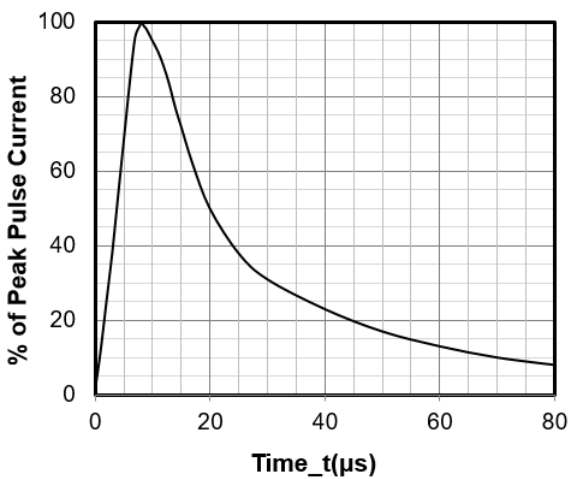
**Peak Pulse Power vs. Pulse Time**



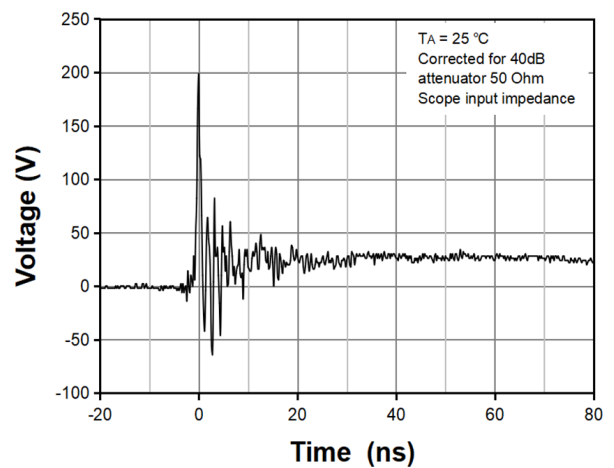
**Clamping Voltage vs. Peak Pulse Current ( $t_p = 8/20\mu\text{s}$ )**



**TLP Measurement**



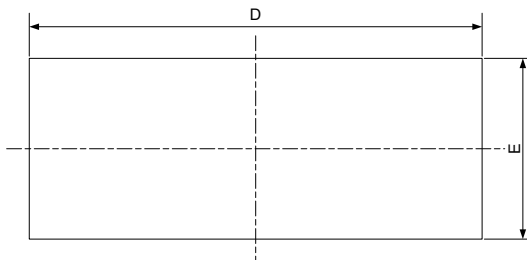
**8 X 20μs Pulse Waveform**



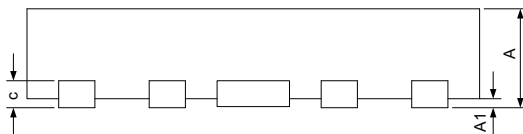
**ESD Clamping Voltage**

**8 kV Contact per IEC61000-4-2**

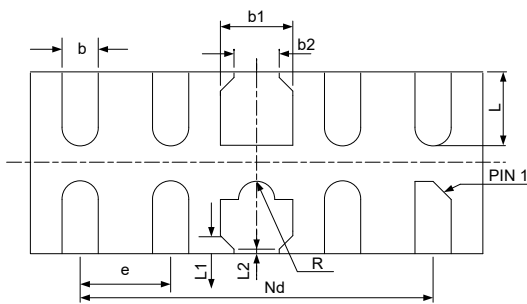
### DFN2510-10 Package Outline Drawing



TOP VIEW



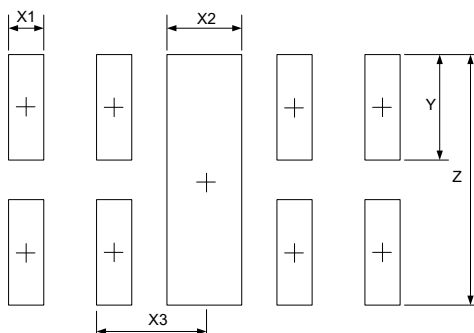
SIDE VIEW



BOTTOM VIEW

SYM	DIMENSIONS					
	MILLIMETERS			INCHES		
	MIN	NOM	MAX	MIN	NOM	MAX
A	0.500	0.550	0.600	0.020	0.022	0.024
A1	0.000	0.020	0.050	0.000	0.001	0.002
b	0.150	0.200	0.250	0.006	0.008	0.010
b1	0.350	0.400	0.450	0.014	0.016	0.018
b2	0.200 REF			0.008 REF		
c	0.150 REF			0.006 REF		
D	2.450	2.500	2.550	0.098	0.100	0.102
e	0.500 BSC			0.020 BSC		
Nd	2.000 BSC			0.080 BSC		
E	0.950	1.000	1.050	0.038	0.040	0.042
L	0.330	0.380	0.430	0.013	0.015	0.017
L1	0.075REF			0.003REF		
L2	0.050REF			0.002REF		
h	0.080	0.120	0.150	0.003	0.005	0.006
R	0.050	0.100	0.150	0.002	0.004	0.006

### Suggested Land Pattern



SYM	DIMENSIONS	
	MILLIMETERS	INCHES
X1	0.200	0.008
X2	0.400	0.016
X3	0.600	0.024
Y	0.600	0.024
Z	1.400	0.056

### Contact Information

Applied Power Microelectronics Inc.

Website: <http://www.appliedpowermicro.com>

Email: [sales@appliedpowermicro.com](mailto:sales@appliedpowermicro.com)

Phone: +86 (0519) 8399 3606