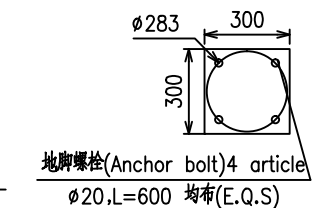
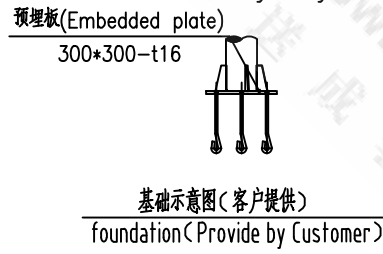
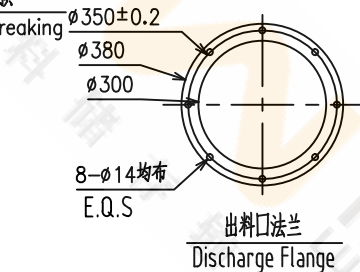
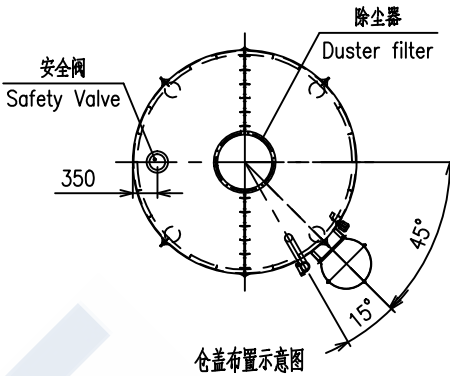
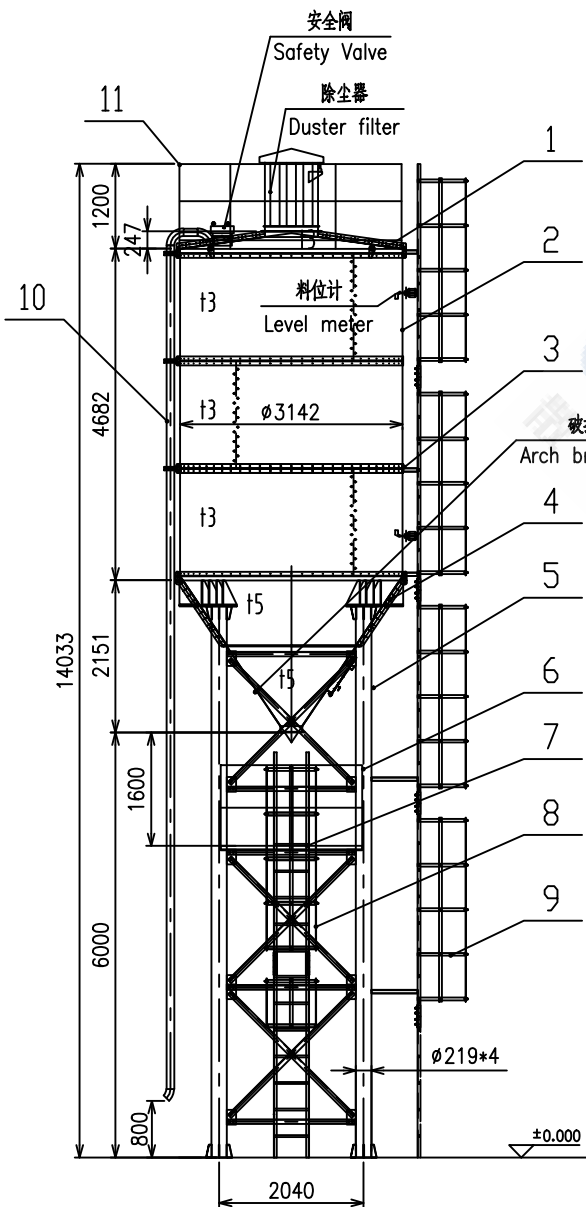
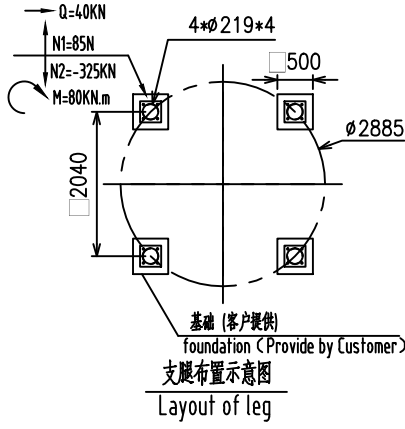
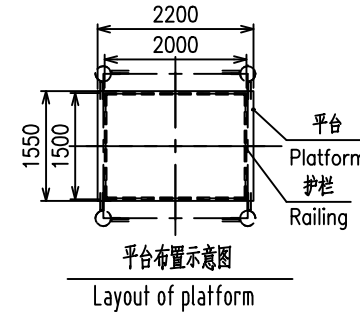


TP3100T50.00



埋板示意图 (客户提供)  
Embedded plate sketch drawing (Provide by Customer)



技术参数 (Technical Parameter):

- 筒仓容量54T, 扣除500高料位装载49T, 装载效率90.9%, 密度按1.3t/m<sup>3</sup>计;  
(Capacity 54T, Actual Capacity 49T, Volume Ratio 90.9%, Density 1.3t/m<sup>3</sup>);
- 底漆: 铁红环氧防锈底漆, 面漆: 丙烯酸面漆, 颜色业主定;  
(Primer: Iron red epoxy antirust primer, Finish paint: pionicer topcoat, Customer specified color.);
- 使用条件: 压力<5KPa, 风压: 0.8KN/m<sup>2</sup>. (Use conditions: Pressure<5KPa, Wind pressure: 0.8KN/m<sup>2</sup>.)

11	TP3100T50.11	顶护栏(Silo top railing)	1	Q235B				
10	TP3100T50.10	进灰管(Feed pipe)	1	Q235B				
9	TP3100T50.09	仓顶爬梯(Top Straight ladder)	1	Q235B				
8	TP3100T50.08	平台爬梯(Platform Straight ladder)	1	Q235B				
7	TP3100T50.07	平台(Platform)	1	Q235B				
6	TP3100T50.06	平台护栏(Platform railing)	1	Q235B				
5	TP3100T50.05	支腿架(Leg assembly drawing)	1	Q235B				
4	TP3100T50.04	锥体(Cone)	1	Q235B				
3	TP3100T50.03	T型法兰(T type steel flange)	2	Q235B				
2	TP3100T50.02	仓板1(body plate)	6	Q235B				
1	TP3100T50.01	仓盖(Silo Cover)	1	Q235B				
序号 NO.	代号 CODE	名称/NAME	数量 Q.T.Y	材料 MATERIAL	单重 S-WEIGHT 重量 WEIGHT	总重 T-WEIGHT	备注 MARK	

方案图 (Plan drawing) 厦门陆威工程机械有限公司  
Xiamen Luwei Construction Equipment Co., Ltd.

TPφ3100-50T-H6000

TP3100T50.00

设计 Designer	标准号 Standardization	图样标记	版本	重量/Weight	比例/Scale
标准化 Standardization				0	1:70
日期/Date		Total Pages共	页	Pages第	页

借通用件登记  
描图  
B校描  
旧底图总号  
签字  
日期