

C5 SERIES

PRODUCT FEATURES

»

- Ergonomic design, fingertip-operated
- Different paddle colors
- Compact design, easy to mount on the top of panel
- Side-by-side mount available, saving space
- Non-contacting hall effect technology, long lifetime
- Design for severe environment, IP67 (electronics)

MARKET FOCUS

»

- Industrial remote controller
- Control panel
- Armrest box



C5 Paddle joystick

TECHNICAL SPECIFICATIONS

» » » » » » » » » »

Mechanical data

Travel angle: $\pm 30^\circ$
 Operating force: 1.6~3.5N
 Maximum allowable force: 30N
 Mechanical life: 3 million cycles
 Weight: 40g

Electrical data

Supply voltage: $5.0 \pm 0.5Vdc$
 Power current consumption: $< 11mA$ (per channel)
 Center voltage: $2.5 \pm 0.1Vdc$
 Maximum linearity tolerance: $\pm 3\%$
 Maximum overload voltage: 20Vdc
 Maximum reserve voltage: -10Vdc
 Load resistance: $> 10K\Omega$
 Insulation resistance: $> 1000M\Omega$
 EMC: 100V/m

Environmental data

Operating temperature $-40^\circ C \sim +70^\circ C$	Storage temperature $-40^\circ C \sim +85^\circ C$	Protection class IP67 (only for electronics)
---	---	--

Paddle Color

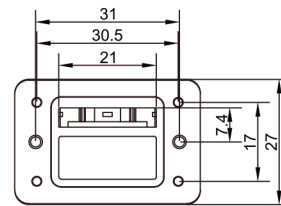
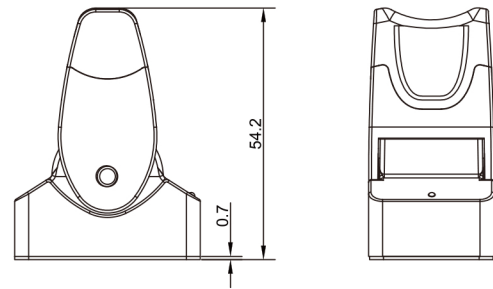


Black RAL 9005	Blue RAL 5010	Green RAL 6038	Yellow RAL 1023	Grey RAL 7042
-------------------	------------------	-------------------	--------------------	------------------

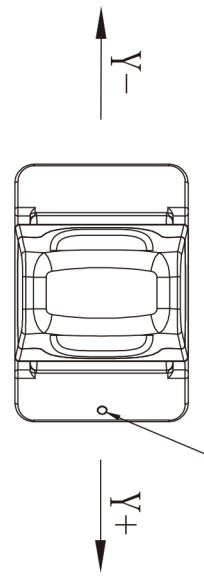


SHAPE DIMENSIONS

» » » » » » » » » »



C5P_shape



ORDERING CODES » » » » » » » » » »

C5 - ① - ② - ③ - ④ - ⑤

① Actuation type

- S Spring return, travel angle $\pm 30^\circ$
- F Spring return, feel point at $\pm 23^\circ$
- L Spring return, latch point at $\pm 23^\circ$

② Output signal

- H11 Supply voltage 5Vdc, 0.5~4.5V ratiometer output
- H21 Supply voltage 5Vdc, 0~4.5V and 4.5~0.5V redundant ratiometer output
- W11 Supply voltage 9~32Vdc, 0.5~4.5V ratiometer output
- W12 Supply voltage 9~32Vdc, 0.5~4.5V and 4.5~0.5V redundant ratiometer output

③ Paddle Color

- 1 Black
- 2 Blue
- 3 Yellow
- 4 Green
- 5 Grey

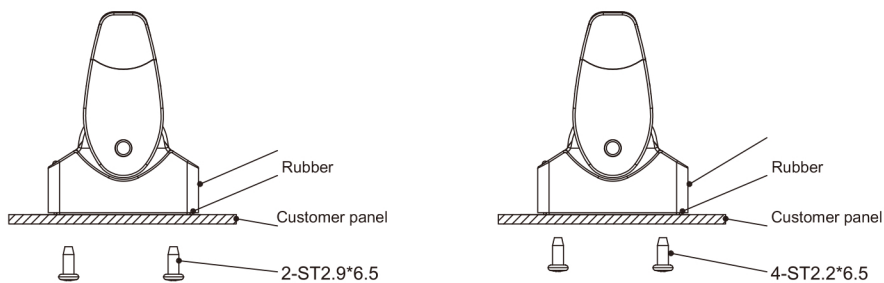
④ Mount

- M1 Self-tapping screw st2.9, 2 holes mounting
- M2 Self-tapping screw st2.9, 4 holes mounting

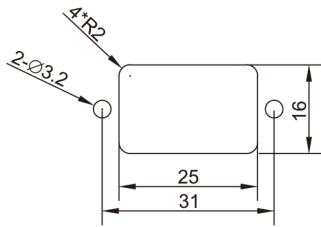
⑤ Wiring

- L Cable wiring, length 350mm
- C connector (custom design)

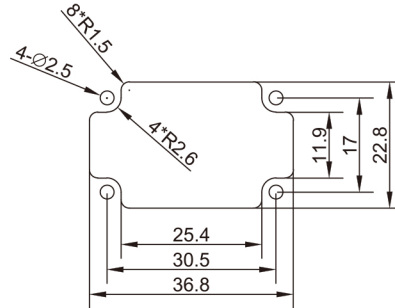
MECHANICAL INSTALLATIONS » » » » » » » » » »



C5P installation



Panel cutout, 2 holes

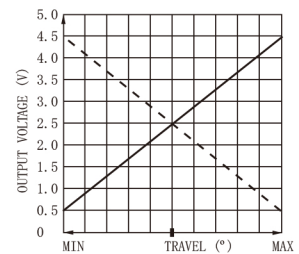
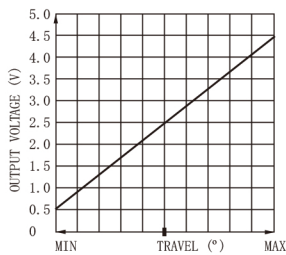


Panel cutout, 4 holes

ELECTRICAL CONNECTIONS » » » » » » » » » »

NO.	Color	Function	
		Voltage (5Vdc)	Voltage (9~32V)
1	Red	VCC	VCC
2	Black	GND	GND
3	blue	Yout1	Yout1
4	Yellow	Yout2	Yout2

OUTPUT CURVE » » » » » » » » » »



CP_output