

The MERCURY Series

High-Speed Glue Tape Lamination

MERCURY GTL-03

High-Speed Glue Tape Laminator

- Glue Tape Punch
- Glue Tape Lamination

Output: 22,000 M3 Modules/Hr

15,000 M4 Modules/Hr

Voltage: 220VAC 50/60Hz

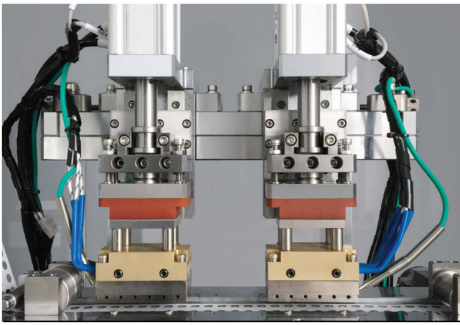
Power: 0.8 kW

Compressed Air: 6kg/cm² 80 L/min

Dims: [L]2010mm [W]730mm

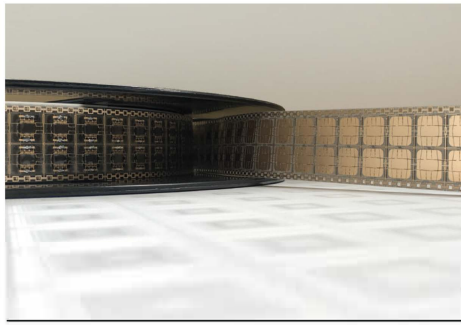
[H]1830mm

Multimedia: [Video link](#)



MERCURY GTL-03

Glue Tape Punching Station



MERCURY GTL-03

Module Reel



MERCURY GTL-03

Glue Tape Lamination Station

The MERCURY high-speed series includes separate machines for cavity milling, module embedding, and glue tape application. These machines are engineered to work independently at a market dominating pace.

The GTL-03 is a heavy-duty high speed glue tape laminator with an economical price point. It will give you the speed and reliability required for those large projects where every efficiency counts.

Glue Tape Punch: For trimming glue tape and paper carrier to match the module tape profile. Japanese HSS tool steel is used to make customized tooling for virtually any type of module tape - from SIM to Dual Interface modules.

Dual Format Tooling (for example, M2 and M3) so changing between module types is fast and easy, requiring only a manual switch and a touch screen selection.

Adjustable Heat & Cycle Time:

Programmable temperature and lamination time to ensure maximum compatibility with a wide variety of glue tape suppliers.

Heating Elements: The GTL-03 is equipped with an dual ceramic heating elements and an Omron PID temperature controller for precise temperature control and long life.

Heat is applied to the top and bottom of the module tape to achieve the consistent application of glue tape.

Tape Detection Sensors: Sensors detect both the presence of glue tape and modules to ensure optimal production control.

PLC Control: Mitsubishi PLC for reliable field proven machine control.