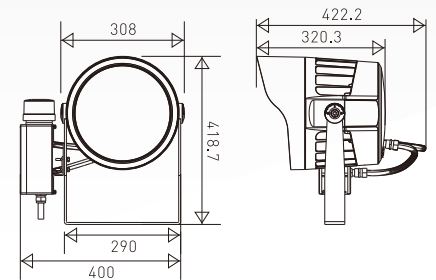
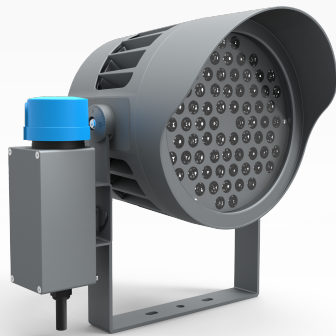


Specification HEBE F394.A

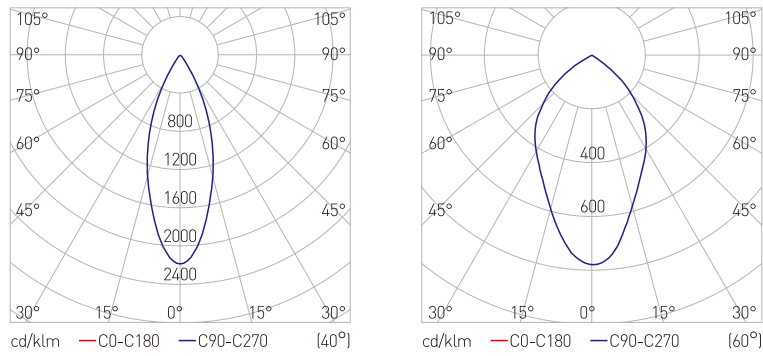


Features

- F.394A is the latest circular outdoor lighting product that adopts a new design concept and brings new visual impact to users;
- The non-visible screw design makes the whole lamp surface simple and smooth;
- The integrated double-cavity sealing structure makes the heat of the LED source of power driver not interfere with each other to extend the whole lamp life and the sealing performance does not affect each other, easy to disassemble and install;
- Open type heat dissipation structure makes the heat dissipation effect is significant and the fin design framework also avoid dust,leaves,rain accumulation. Rain can be drained from any direction smoothly;
- Various installation methods: bracket installation, visible buried installation, ground installation, hoop installation;
- The lamp body can rotate $\pm 90^\circ$ and the bracket adopts gear type bite design which is reliable, accurate and convenient;
- Visible installation is apply to parks, residential square, hill landscape, etc.

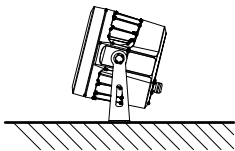
Technical Data

Model	F.394A.10.0120.060.W4.02	F.394A.10.0150.060.W4.02	F.394A.10.0180.060.W4.02
Rated Power	120W	150W	180W
LED Type	Samsung LH351B	Samsung LH351B	Samsung LH351B
LED QTY	48PCS	60PCS	72PCS
Lumens Output	14594lm	18023lm	21605lm
Nominal Voltage	240VAC/50Hz	240VAC/50Hz	240VAC/50Hz
Input Voltage	176~265VAC	176~265VAC	176~265VAC
Input Current	0.5A	0.625A	0.75A
Inrush Current	65A/268us	80A/225us	80A/225us
Power factor	> 0.9	> 0.9	> 0.9
Driver Model	TRIDONIC: Driver LCo 135W 200-1050mA 220V one4all NFC C EXC3	TRIDONIC: Driver LCo 200W 200-1050mA 355V one4all NFC C EXC3	
Net Weight	10.8kg		
CCT	4000K		
CRI	70		
Color Tolerance	5-Step		
LED Current	1500mA		
LED Voltage	2.8-3.0V		
Beam Angle	40°/60°		
Control Type	DALI/ON-OFF		
IK Grade	Ik07		
Security Grade	Class I		
Ambient Temperature	-20°~+40°		
Ambient humidity	10%~95%RH		
Ingress Protection	Ip66		
SPD	10KV, 5KA		

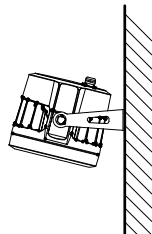


Installation Method

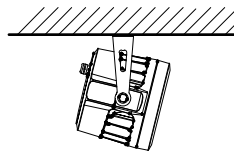
Horizontal Installation



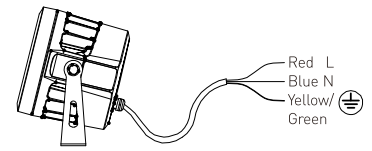
Wall Installation



Ceiling Installation



Wiring



Encoding Rule

Product Type	Product Code	Classification	Light Source	Rated Power	Beam Angle	Light Color	Input Voltage
F: Flood Light	394	A	10: LED	0120: 120W 0150: 150W 0180: 180W	040: 40° 060: 60°	W4: 4000K	02: AC176V~265V

