



Product features

- DAEDALUS F.374D is a simple ,fashionable and compact flood light , widely used in outdoor any lighting places;
- Brand LED chip design ,high brightness, strong color rendering, max 48W, super energy saving design, ultra high efficiency ,max 94lm/w achievable;
- High standard ADC12 Aluminum, integrated die- casting technology ensures it's strong and durable;
- Lamp body is with 500 hours anti-salt spray corrosion spraying treatment ,which can effectively resist UV and harsh environment corrosion;
- Integrated light source and built-in driver for easy installation ;
- High light transmittance ultra-white toughed glass, multiple beam angle and colors optional;
- Providing a variety of anti-glare grille accessories and stretch optic glass for free matching;
- Ingress protection : IP65.

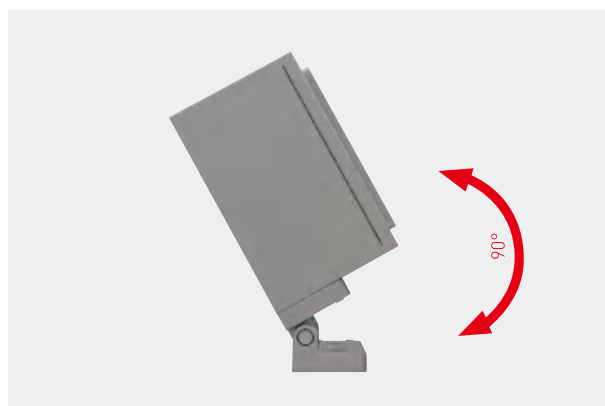


Sturdy and Durable

Compact, high standard ADC12 Aluminum, integrated die- casting technology;
500 hours anti-salt spray corrosion spraying treatment.

Angle Adjustment

Adjustable angle 0-90°



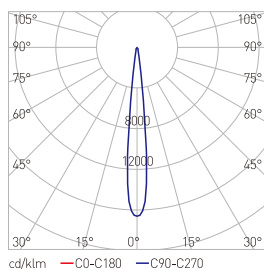
Model	F.374D.10.0024.02	F.374D.10.0048.02
Rated Power	24W	48W
LED Type	3535	3535
LED QTY	24	24
CRI	CRI ≥ 70	CRI ≥ 70
PF	≥0.9	≥0.9
CCT	3000K/4000K/5000K	3000K/4000K/5000K
Beam Angle	10°/25°/40°/60°	10°/25°/40°/60°
Dimension	180*180*119mm(Without bracket)	180*180*119mm(Without bracket)
Weight	3.7KG	3.7KG
Input Voltage	AC176V~265V 50/60Hz	AC176V~265V 50/60Hz
Control Mode	Single color ON/OFF, RGBW	Single color ON/OFF
Material	Die-casting Aluminum	Die-casting Aluminum
Lifespan	50000H	50000H
Ambient Temperature	-20°C~40°C	-20°C~40°C
Ambient humidity	10%~95%RH	10%~95%RH
Security Level	CLASS I	CLASS I
Ingress Protection	IP65	IP65

Light Color Model Luminous Flux (lm)	3000K (Single color ON/OFF)	4000K (Single color ON/OFF)	5000K (Single color ON/OFF)	RGBW
F.374D.10.0024.010	2075	2200	2200	1159
F.374D.10.0024.025	2079	2225	2225	1219
F.374D.10.0024.040	1933	2050	2050	1124
F.374D.10.0024.060	2079	2287	2287	1296
F.374D.10.0048.010	4150	4400	4400	/
F.374D.10.0048.025	4158	4450	4450	/
F.374D.10.0048.040	3866	4100	4100	/
F.374D.10.0048.060	4158	4574	4574	/

Light Distribution Curve

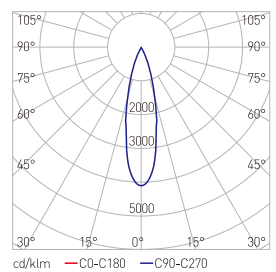
F.374D.10.0048.010.W4.02

H(m)	D(m)	Eav(lx)	Ecen(lx)
4.0	0.68	3072	3980
8.0	1.36	755	972
12.0	2.04	334	428
16.0	2.72	187	240
20.0	3.40	120	153
24.0	4.08	83	106



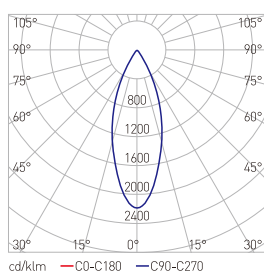
F.374D.10.0048.025.W4.02

H(m)	D(m)	Eav(lx)	Ecen(lx)
4.0	1.76	779	1260
8.0	3.52	192	308
12.0	5.28	85	136
16.0	7.04	48	76
20.0	8.80	31	49
24.0	10.56	21	34



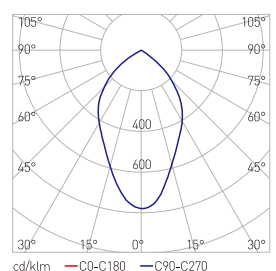
F.374D.10.0048.040.W4.02

H(m)	D(m)	Eav(lx)	Ecen(lx)
4.0	2.92	329	520
8.0	5.84	81	127
12.0	8.76	36	56
16.0	11.68	20	31
20.0	14.60	13	20
24.0	17.52	9.04	14

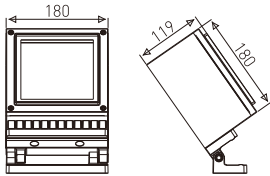


F.374D.10.0048.060.W4.02

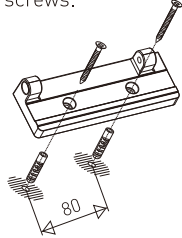
H(m)	D(m)	Eav(lx)	Ecen(lx)
4.0	4.07	153	281
8.0	8.14	38	70
12.0	12.21	17	31
16.0	16.28	9	17
20.0	20.35	6	11
24.0	24.40	4	7



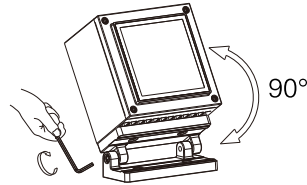
Unit: mm



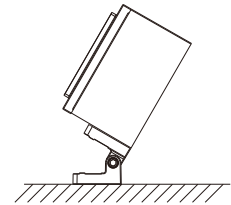
1、Drilling 2 holes (∅ 8 mm, depth 30 mm) on the mounting surface with percussion drill , then using a screwdriver to install screws.



2、 Rotate the angle according to the demand, and then fix the bracket with L-shaped hexagon wrench. No loosening is allowed.



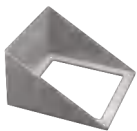
3、 Installation complete



Encoding Rule Example: F.374D.10.0048.060.W3.02-D

Product Type	Product Code	Classification	Light Source	Rated Power	Beam angle	Light Color	Input Voltage
F: Flood light	374	D	10: LED	0024:24W 0048:48W	010: 10° 025:25° 040:40° 060:60°	W3: 3000K W4: 4000K W5: 5000K RGBW: RGBW	02: AC176V~265V

Accessories (Sold Separately) :



Square anti glare mask

Color Options:

