



ZHOUSHAN XINYA SHIPYARD CO., LTD SURVIVE BY QUALITY AND HONESTY

ZHOUSHAN XINYA SHIPYARD CO., LTD

Add: Donglangzui, Liuheng Town, Putuo District, Zhoushan City, China 316131

Tel: +86-580-6088586 8108772 8108773

Fax: +86-580-6089032

Website: www.xinyashipyard.com

E-mail: xinyashipyard@xinyashipyard.com

qscenter@xinyashipyard.com(Quality Service Center)

WeChat Subscription

**PROFESSIONAL
AND
RELIABLE**

**XINYA
SERVE THE WORLD**

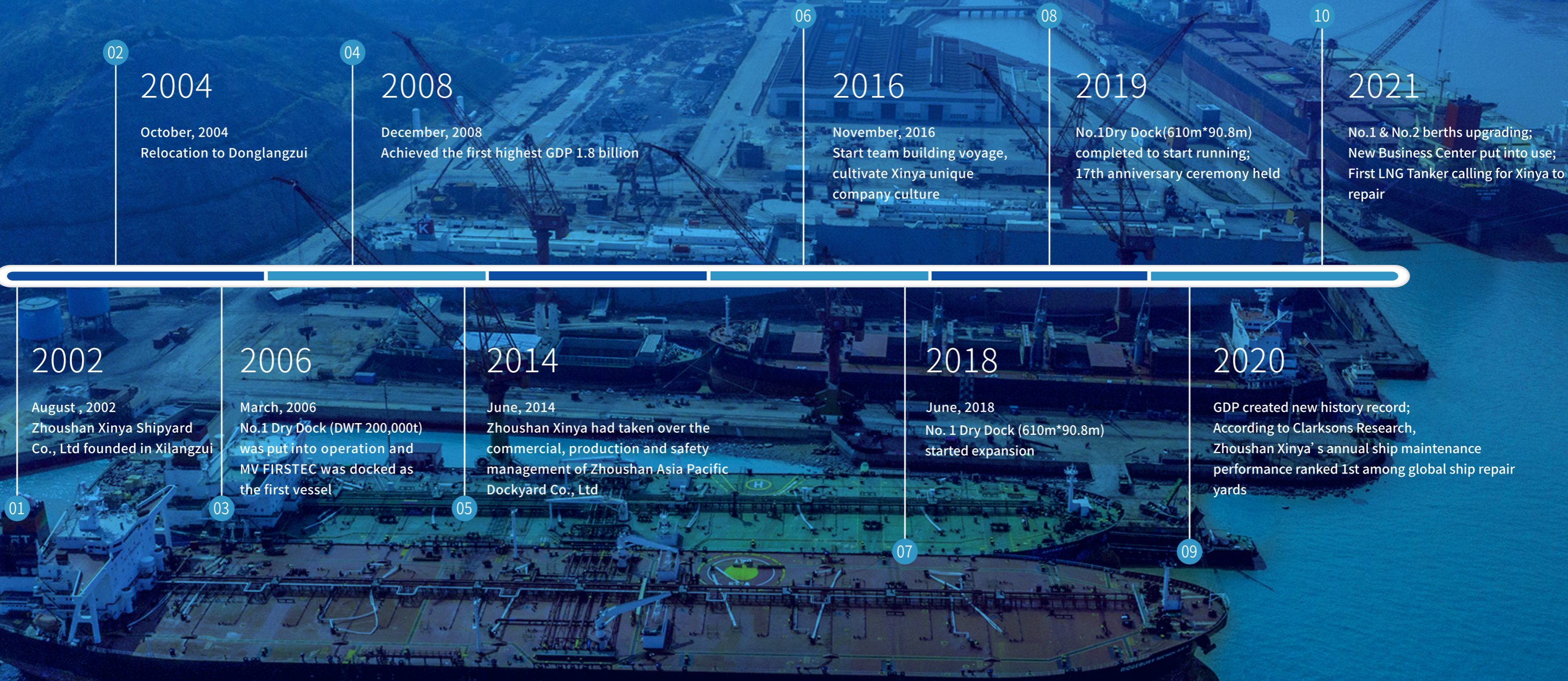
**PROFESSIONAL PERFECT
LEADING ETERNAL**



CONTENTS



TO BE FIRST CLASS IN GLOBAL SHIP-REPAIR



COMPANY PROFILE

Zhoushan Xinya Shipyard Co., Ltd. was founded in August 2002 and is currently the largest private corporation in the ship repairing industry in China, owning three production bases. Xinya Shipyard is located at Donglangzui, Liuheng Town, Zhoushan City, Zhejiang Province, where is at the south bank of Shuangyu Port (Fodu Waterway). Slow tide, convenient water and land traffic, is the ideal place for various vessels to enter and exit the docks smoothly. The total investment is reaching RMB 3.2 billion, covering an area of over 950,000m² in all and a construction area of about 230,000 m², and around 3,600 m of deep water coastline with 10 berths and 4 docks. At present, there are over 1,500 employees and more than 5,000 subcontractor workers in Xinya.

Xinya has an annual capacity to repair over 400 vessels. Specializing in repairing various large and medium-sized vessels such as container vessels, oil tankers, bulk carriers, chemical tankers, engineering vessels and PCTC, and continuously improve the proportion of “double-high vessels” such as LPG/LNG carriers. Our clients come from more than 30 countries and regions including Italy, Canada, South Korea, Singapore, the United States, Japan, Greece, etc. Xinya has established long-term and stable strategic cooperation with internationally renowned shipping corporations such as MAERSK, MSC, Evergreen, HMM, Hyundai Glovis, NYK, MOL, K-Line, Shoeni Kisen.

SHANGHAI



SHANGHAI AIRPORT

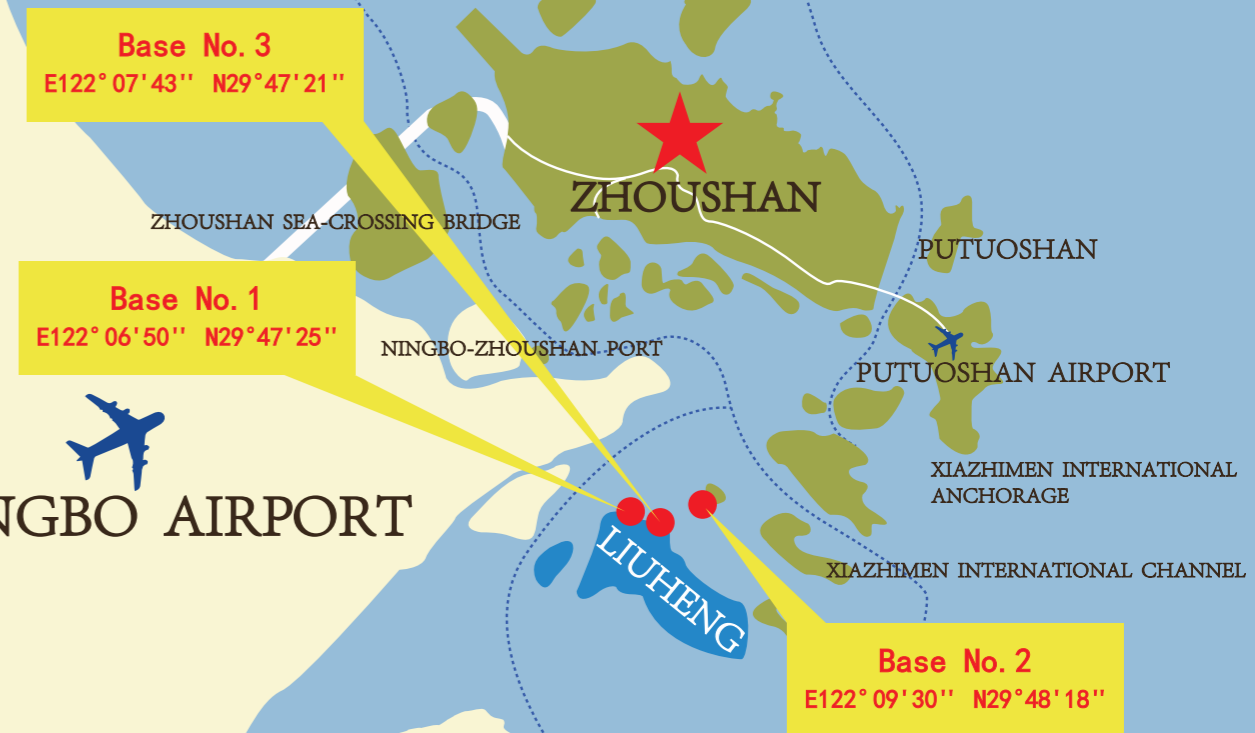
Xinya has been accredited to ISO 9001:2015 Quality Management System, ISO14001:2015 Environmental Management System and ISO45001:2018 Occupational Health and Safety Management System, and is subsequently awarded the titles as Enterprise with Credible Quality in China, Outstanding Enterprise of Technological Transformation during the Tenth Five-year Plan in Zhejiang Province, Excellent Enterprise with Quality Assured and Customers Satisfied in Zhejiang Province, Demonstration Unit of Energy Use in Zhejiang Province, Zhoushan Quality Award, Four Provinces and One City Quality Work Advanced Unit etc. Xinya Shipyard was identified as the first batch of advantageous ship repairing enterprises in Zhoushan City. According to the statistics of China Association of the National Shipbuilding Industry, since 2006, Xinya's annual ship repairing output value and quantity, annual sales and foreign exchange income have been among the top ten national ship repairing enterprises. Since 2017, Xinya Shipyard has ranked third among national ship repairing enterprises above the designated size.



ZHEJIANG

NINGBO

TO NINGBO AIRPORT

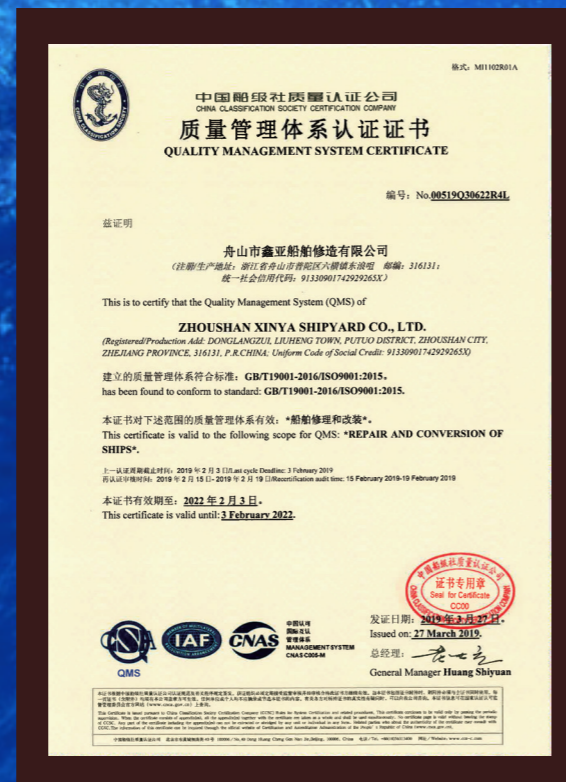


HONOR

The company is a provincial standardization pilot unit of green manufacturing in shipbuilding industry, and has been rated as Green Ship Repairing Enterprise in Zhoushan City.



PERSISTENCE IN ACHIEVING DREAMS





SAFE XINYA



GREEN XINYA



ENVIRONMENT





舟山市鑫亚船舶修造有限公司平面图

ZHOUSHAN XINYA SHIPYARD CO., LTD BLUEPRINT



Note:

- Total length of coastline: 3600m
- Distance between Base No. 3 and Base No. 2 is 2.1 nautical miles apart
- Sailing time: 15 minutes
- Equipped with 6 transport vessels, 20 round-trip per day

DRY DOCK

Dock No.1 & No.2 in Base No.1

Dock	Grade(t)	Dimension(m)	Crane
No.1	600,000	610*90.8*12.5	200t*120.3m,120t*62m, 50t*90m,50t*80m*2sets
No.2	80,000	230*38*11	60t*43m, 30t*50m



DRY DOCK

Dock No.3 & No.5 in Base No.2

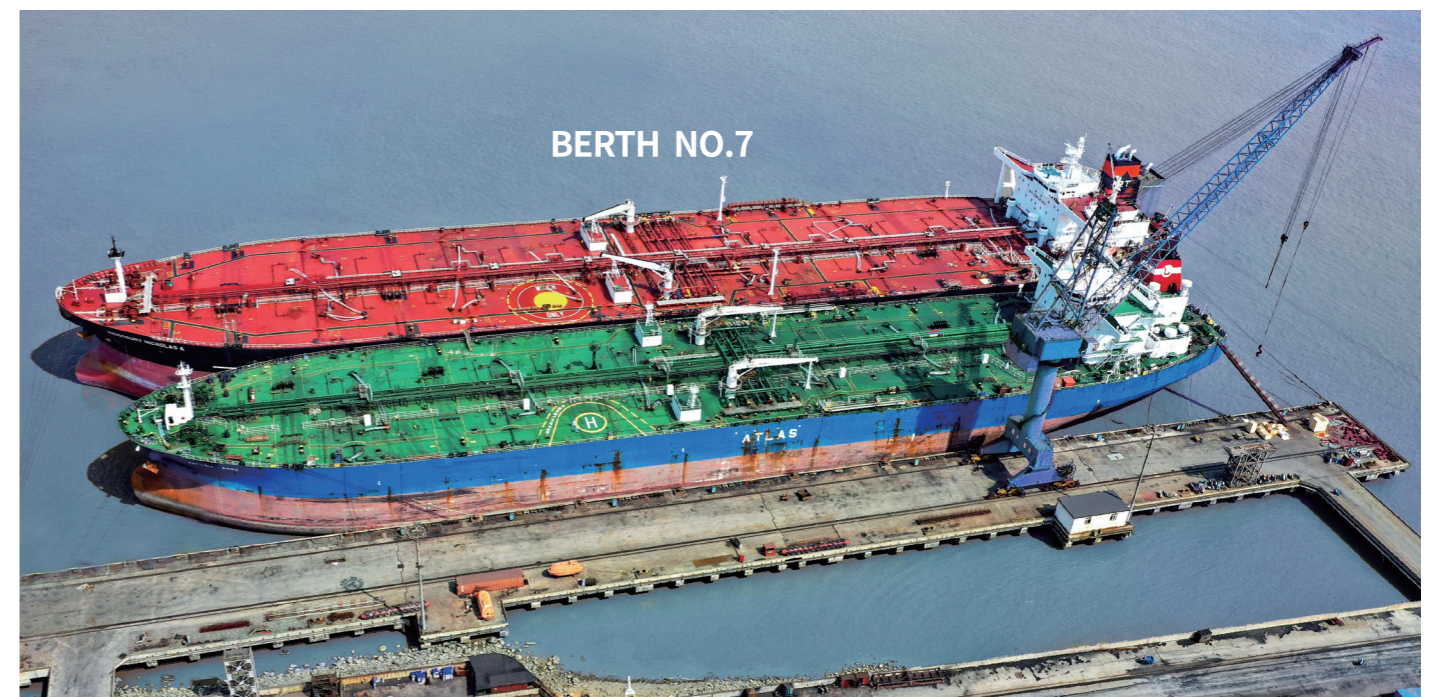
Dock	Grade(t)	Dimension(m)	Crane
No.3	300,000	368*76*14.5	50t*75m*3sets
No.5	180,000	300*46*13.5	40t*65m



OUTFITTING QUAY

BERTH PARAMETER TABLE

Berth	Capacity(t)	Size(m)	Draft (m)	Crane
No.1	200,000	478*20	8-10 as usual (15 at max)	30t*62m, 50t*98m*2sets
No.2				
No.3	80,000	217*20		50t*90m
No.5	150,000	292*30		50t*70m,50t*98m
No.6	80,000	230*20		30t*62m,50t*98m
No.7	80,000	292*25		50t*75m
No.8	300,000	300*25		50t*75m,50t*90m
No.9		300*25		50t*75m
No.10	300,000	400*20		50t*90m*2sets 30t*62m
No.11				



FACILITIES & WORKSHOPS

The company is equipped with intelligent, digital and environment-friendly 8S standard workshops such as Hull Workshop, Pipe Workshop, Machinery Workshop and Chemical Cleaning Workshop, equipped with portal crane, gantry crane and advanced machining equipment, shipbuilding equipment and testing equipment.

ENTERPRISE STRENGTH DISPLAY

WORKSHOPS



CHEMICAL CLEANING WORKSHOP

Self-developed hybrid electric cabinet equipment.



ELECTRICAL WORKSHOP

With motor repair workshop running test equipment (440V 60HZ); axial fan load test equipment (440V, 60HZ); fan dynamic balance calibration equipment.



GAS STATION

With 15 Ingersoll rand screw air compressors.



HULL WORKSHOP

With numerical control plasma cutting, frequency conversion driving, 800T hydraulic machine, environmental protection telescopic dust removal equipment and so on.



DOCKING WORKSHOP

Equipped with environment-friendly mobile grinding platform, pneumatic hoist and so on.



EQUIPMENT MAINTENANCE WORKSHOP

Equipped with sensorless vector converter.



INTEGRATED WAREHOUSE

Establish OA system, BAR CODE system and ERP management system to ensure the timeliness and accuracy of purchase orders.



LNG WORKSHOP



MACHINING WORKSHOP

Equipped with CNC milling and boring machine, CNC lathe processing instruments and so on.



PIPE WORKSHOP

Equipped with bending machine, CNC intersecting pipe system cutting equipment and so on.



MACHINERY WORKSHOP

The Machinery Workshop is equipped with main engine piston overhaul platform and other equipment and facilities.

FACILITIES



CHERRY PICKERS

Owned Cherry Pickers 130 vehicles, lifting height ranging from 21m, 25m, 30m to 36m.



TUGBOATS

The company is equipped with 5 large tugboats. Tugboat with 5000hp at max.

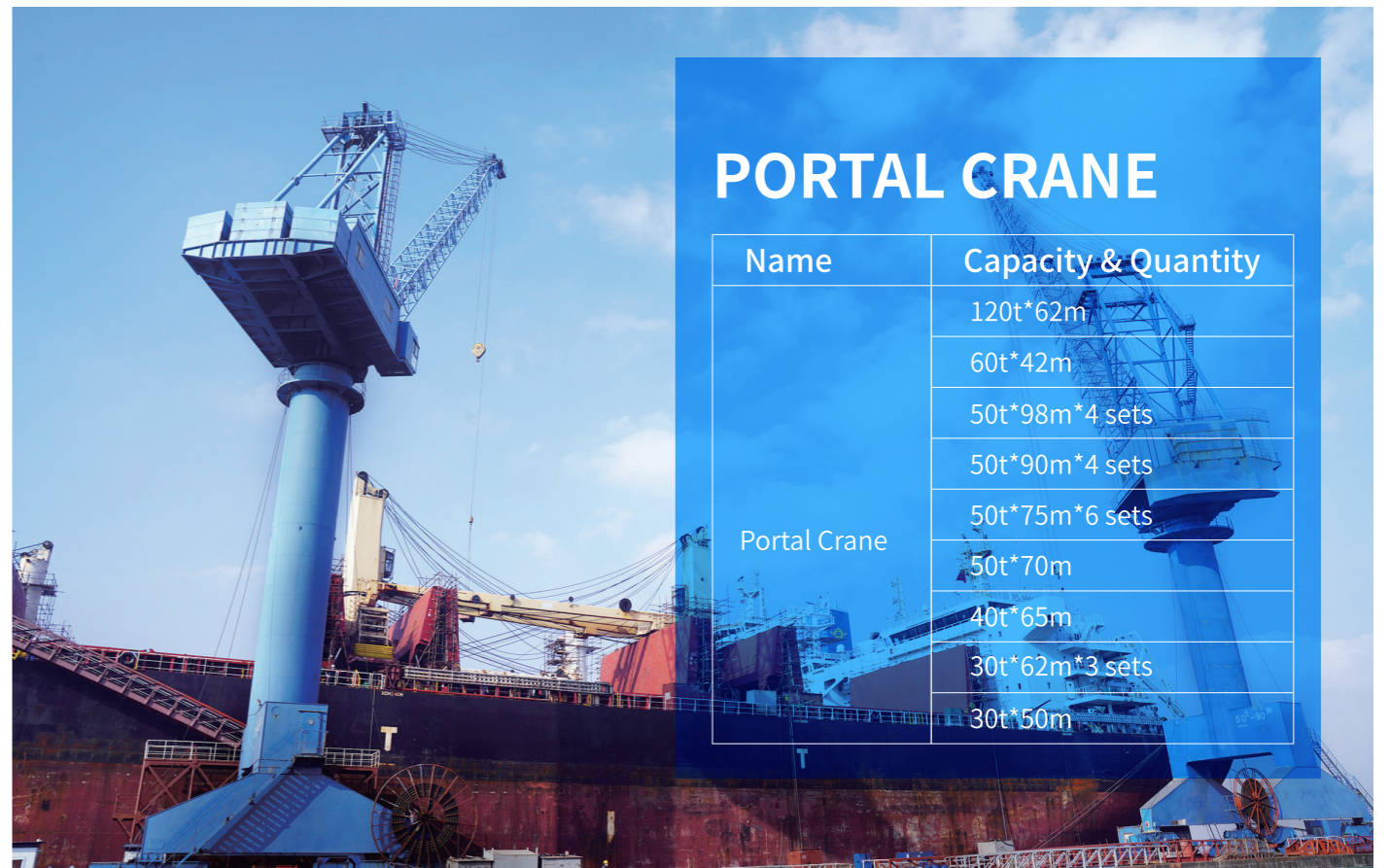
GANTRY CRANE

Name	Capacity & Quantity
Gantry Crane	200t*120.3m
	100t*30m
	50t*40m
	50t*30m*2 sets
	40t*40m*2 sets
	20t*26.5m
	16t*30m



PORTAL CRANE

Name	Capacity & Quantity
Portal Crane	120t*62m
	60t*42m
	50t*98m*4 sets
	50t*90m*4 sets
	50t*75m*6 sets
	50t*70m
	40t*65m
	30t*62m*3 sets
	30t*50m





**ABB JIANGJIN TURBO
SYSTEMS CO., LTD
ZHOSHAN BRANCH**

Maintenance and repair for all ABB turbochargers, regardless of the model, types and use.



**DALIAN WANFANG MARINE
TECHNOLOGY CO., LTD
SERVICE STATION**

Maintenance and repair for YANMAR, MAN B&W, MAK and among others related diesel engines. Maintenance and repair for KAWASAKI and others related hydraulic facilities and equipment.



**MAN PRIMESERV ZHOSHAN
WORKSHOP**

Offering the perfect after-sale packages for power plants and guaranteeing rapid completion of maintenance work and high availability of MAN products in operation.



**ALFA LAVAL (SHANGHAI)
TECHNOLOGIES CO., LTD
SERVICE STATION**

Maintenance and repair for gasketed plate heat exchangers etc.



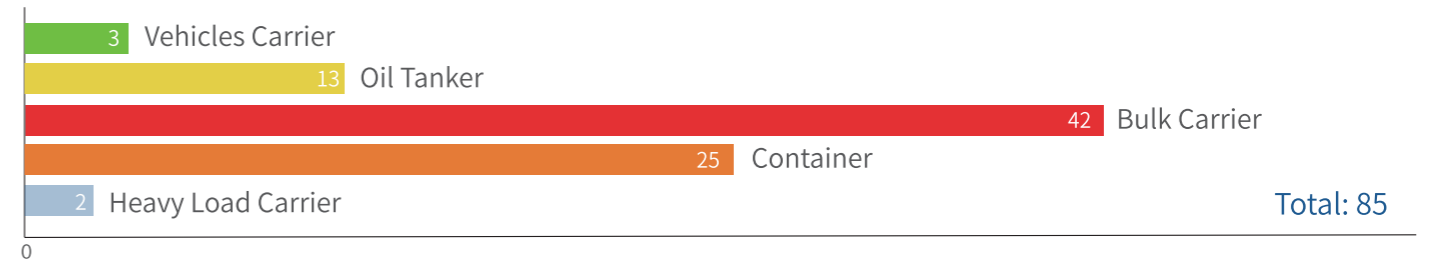


VESSELS REPAIRED

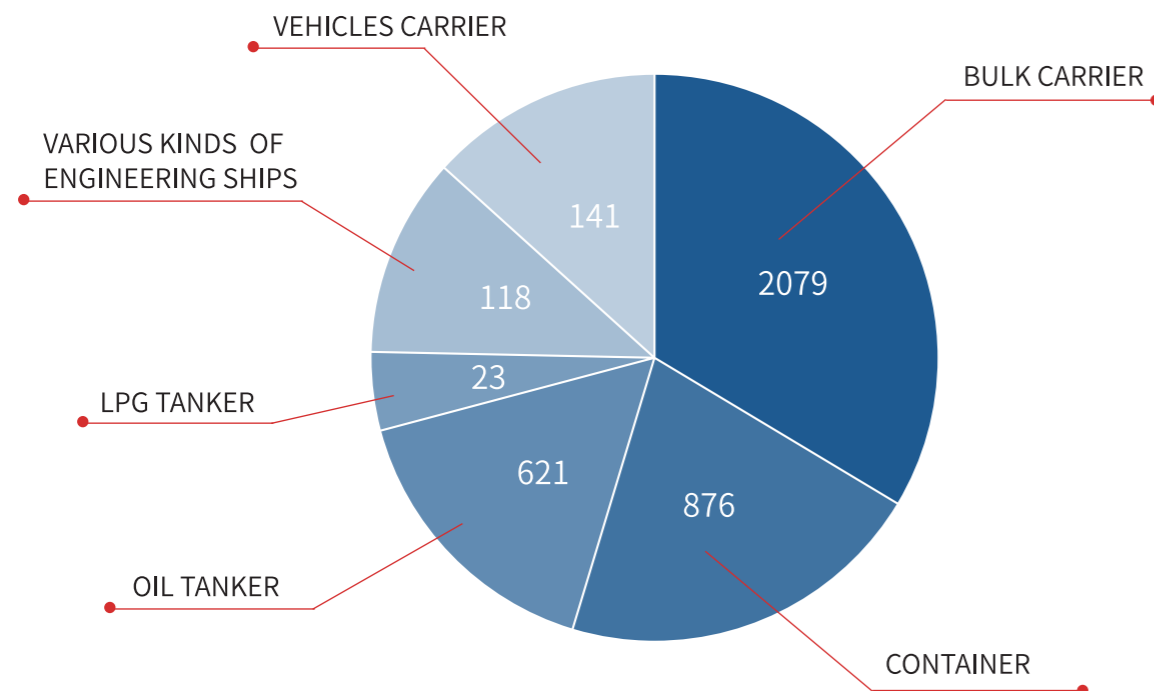
(FROM YEAR 2006 TO 2020)

BE CONSCIENTIOUS BE FAST KEEP WORDS NO EXCUSE

SEA DAMAGE VESSEL REPAIR

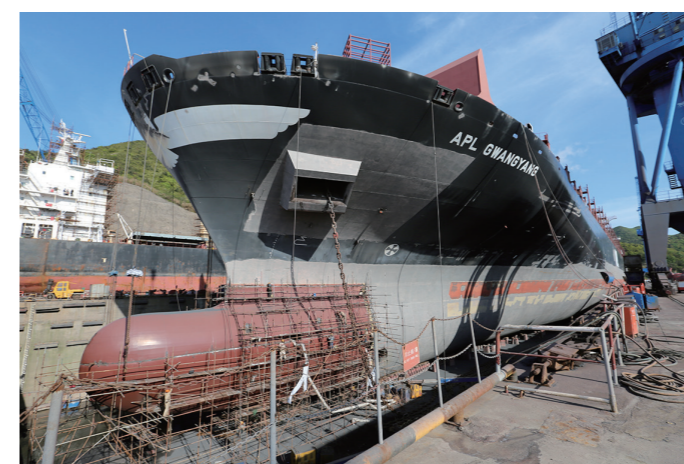


SECTOR TABLE

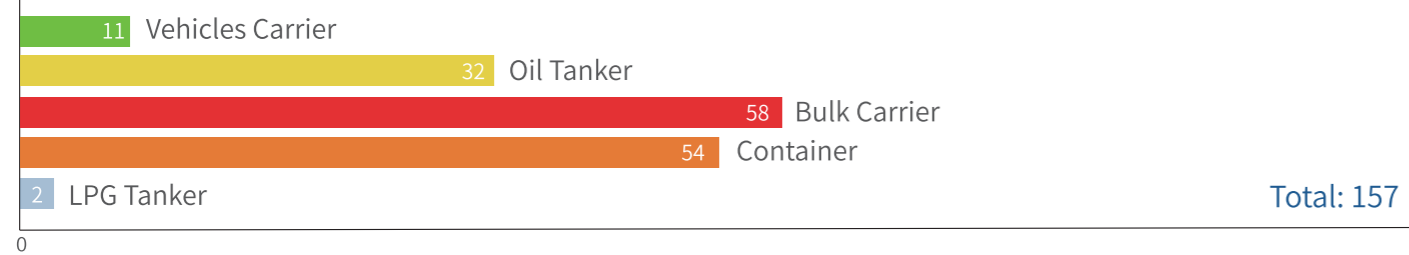


BULBOUS BOW MODIFICATION

The company not only initiated the new process of bulbous bow blocks assemble above the water, and also accomplished the conversion of a bulbous bow within 96 hours which broke the industry record.

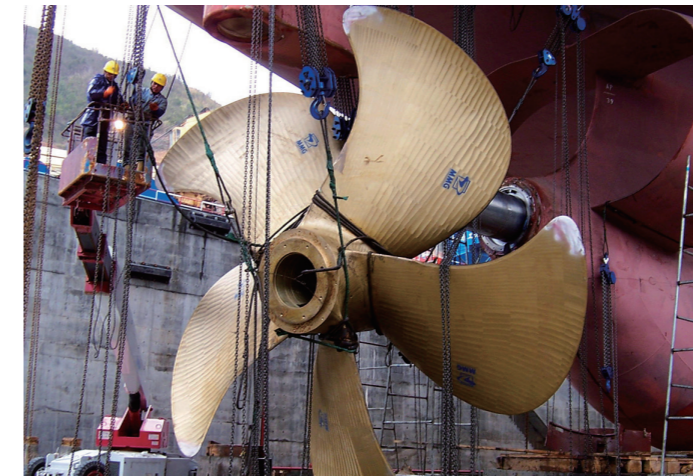


EGCS INSTALLATION



PROPELLER HORIZONTAL BLUE FITTING

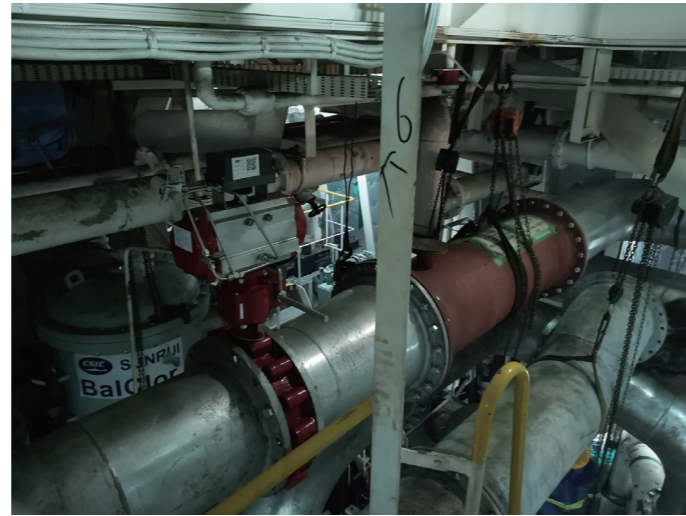
Engineering Management Dept invented special device for propeller replacement, which can save time, manpower and lifting costs substantially. The device replaced propellers by bracket supporting and track propulsion, the accuracy is greatly improved.



BWMS INSTALLATION MODIFICATION

299 BWMS Installation Modification

Total: 299



THE FIRST CONVERTED SHIP

VESSEL PARTICULAR:93.8m*14.6m

CONVERSION INFORMATION:As the first converted ship, the oil tanker converted to an asphalt ship, the structure of the original cargo oil tank and the side water tank was dismantled, and the asphalt tank and deck piping system were newly installed.



CHEMICAL TANKER (CARGO TANK REPAIR)

REPAIR PERIOD: From JUL. 13, 2019 to AUG. 15, 2019

MAIN JOB: The 20 side tanks and cargo oil tanks of the ship needed to be replaced and repaired, especially for No.7 tank, which required large area of single 316L stainless steel plate to replace the composite plate.



ICE BREAKER CPP&SHAFTING SYSTEM MAINTENANCE

VESSEL PARTICULAR:88m*18m

MAIN JOB: Overhaul of CPP system, bow thruster and rudder. The controllable-pitch propeller (including the stern shaft) weighs 83 tons with 16m in length.



HIGH-QUALITY SERVICE

Adhering to the service concept of "Always care about shipowners' requirements. Always provide shipowners a better experience. Always strive to create greater value for shipowners.", our company fully implements high-quality service standard.

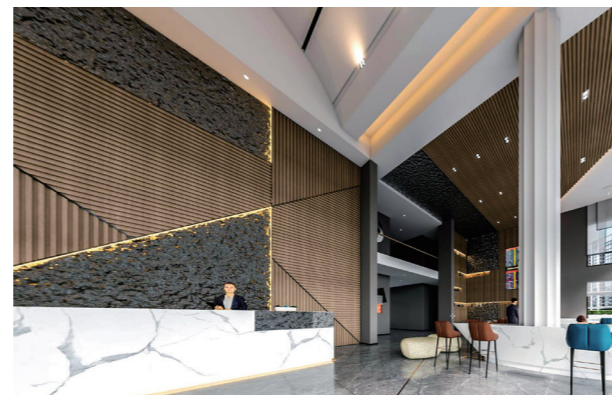


Swearing-in Ceremony for the Full Implementation of High Quality Service.

ALWAYS MAKE OWNERS FEEL AT HOME



BUSINESS CENTER

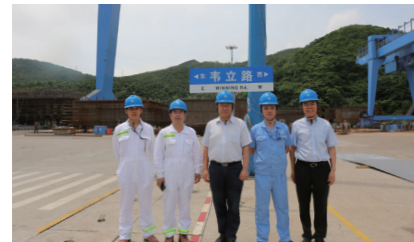


OWNER CAFETERIA

CUSTOMERS



GROUP PHOTOS



CONTACT



Mr. Xia Songkang
CEO

Tel: +86 580 6088 222
M.P.: +86 139 0680 6703
Website: www.xinyashipyard.com
E-mail: xiasongkang@xinyashipyard.com
xinyashipyard@xinyashipyard.com



Mr. Fon He
Vice President

Tel: +86 580 6089 846
Fax: +86 580 6089 032
M.P.: +86 139 6723 1784
Website: www.xinyashipyard.com
E-mail: fon.he@xinyashipyard.com
xinyashipyard@xinyashipyard.com



Mrs. Dolphin Le
Commercial Manager

Tel: +86 580 6089 970
Fax: +86 580 6089 032
M.P.: +86 138 6822 8418
Website: www.xinyashipyard.com
E-mail: dolphin.le@xinyashipyard.com
xinyashipyard@xinyashipyard.com



Mr. Shao Dong
Executive Vice Commercial Manager

Tel: +86 580 6180 108
Fax: +86 580 6089 032
M.P.: +86 136 6658 1060
Website: www.xinyashipyard.com
E-mail: shaodong@xinyashipyard.com
xinyashipyard@xinyashipyard.com



Mr. Shao Kai
Vice Commercial Manager

Tel: +86 580 6089 560
Fax: +86 580 6089 032
M.P.: +86 138 6824 5646
Website: www.xinyashipyard.com
E-mail: shao.kai@xinyashipyard.com
xinyashipyard@xinyashipyard.com



Mrs. Joyce Bao
Assistant Commercial Manager

Tel: +86 580 6689 313
Fax: +86 580 6089 032
M.P.: +86 158 5805 9980
Website: www.xinyashipyard.com
E-mail: joyce.bao@xinyashipyard.com
xinyashipyard@xinyashipyard.com



Mr. Xia Liangtan
Marketing Manager

Tel: +86 580 6088 700
Fax: +86 580 6089 032
M.P.: +86 137 3252 6032
Website: www.xinyashipyard.com
E-mail: xlt@xinyashipyard.com
xinyashipyard@xinyashipyard.com