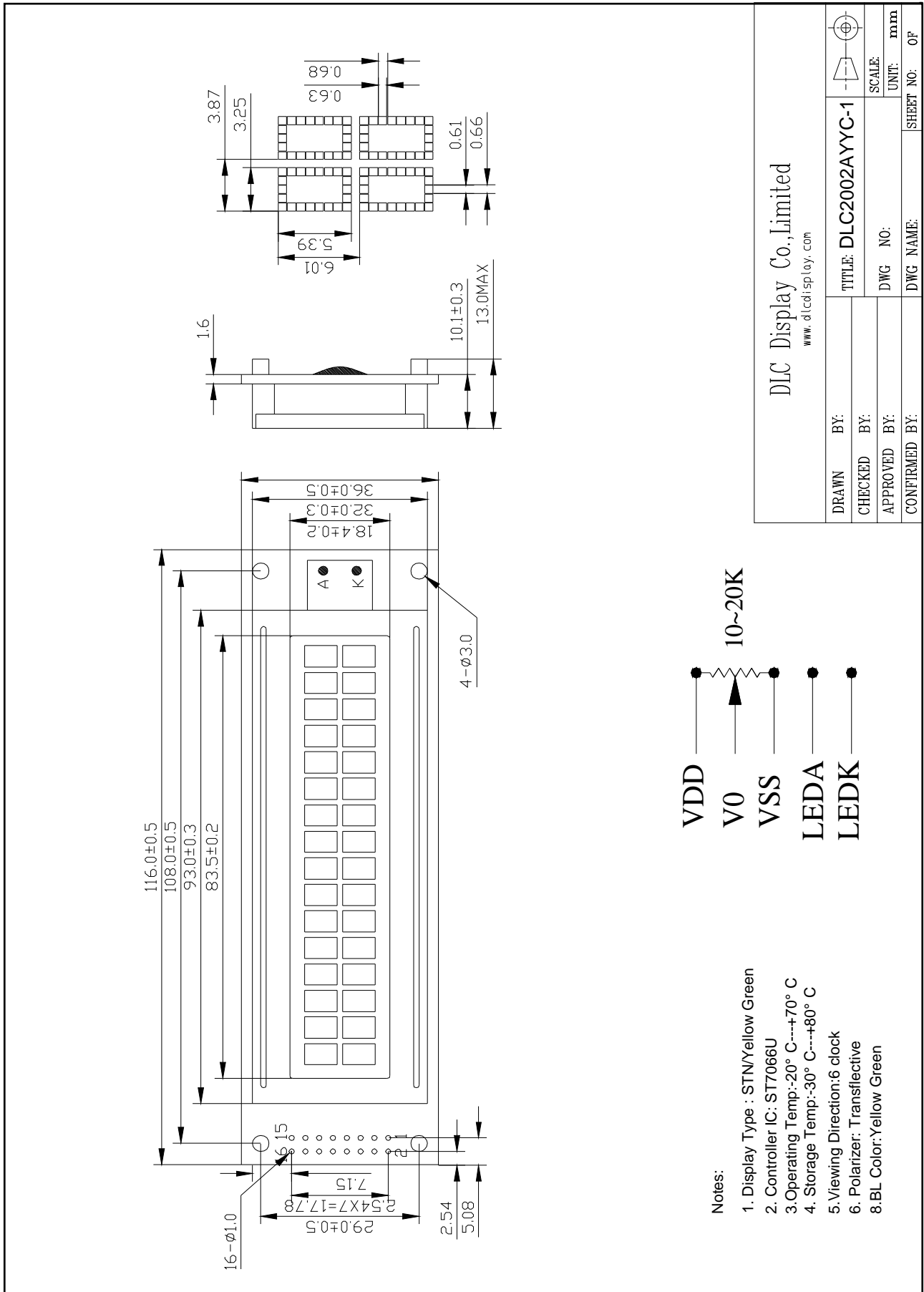
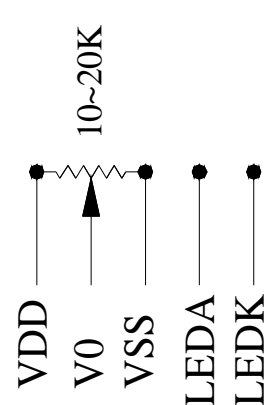


Outline Drawing



DLC Display Co., Limited www.dlcdisplay.com		TITLE: DLC2002AYYC-1		SCALE:	
DRAWN BY:	CHECKED BY:	DWG NO:	DWG NAME:	UNIT: mm	SHEET NO. OF



- Notes:
1. Display Type : STN/Yellow Green
  2. Controller IC : ST7066U
  3. Operating Temp.: -20° C --- +70° C
  4. Storage Temp.: -30° C --- +80° C
  5. Viewing Direction: 6 clock
  6. Polarizer: Transflective
  8. BL Color: Yellow Green



<b>MECHANICAL DATA</b>		
<b>Item</b>	<b>Nominal Dimensions</b>	<b>Unit</b>
Module Size(W×H×T)	116.0×36.0×13.0	mm
Viewing Area(W×H)	83.5×18.4	mm
Character Size(W×H)	3.25×5.39	mm
Dot Size(W×H)	0.61×0.63	mm

<b>ABSOLUTE MAXIMUM RATINGS</b>					
<b>Item</b>	<b>Symbol</b>	<b>Min</b>	<b>Type</b>	<b>Max</b>	<b>Unit</b>
Operating Voltage	VDD	4.5	5.0	5.5	V
Operating Current	IDD	1.2	1.6	2.0	mA
LED Voltage	V <sub>LED</sub>	4.5	5.0	5.5	V
LED Current	I <sub>LED</sub>	77	120	180	mA
Operating Temp.	Topr	-20	—	+70	°C
Storage Temp.	Tsto	-30	—	+80	°C

<b>ELECTRICAL CHARACTERISTICS</b>					
<b>Item</b>	<b>Symbol</b>	<b>Min</b>	<b>Type</b>	<b>Max</b>	<b>Unit</b>
Input Hight Voltage	V <sub>IH</sub>	2.2	—	VDD	V
Input Low Voltage	V <sub>IL</sub>	0	—	0.6	V
Output Hight Voltage	V <sub>OH</sub>	2.4	—	VDD	V
Output Low Voltage	V <sub>OL</sub>	0	—	0.4	V

PIN CONNECTIONS			
PIN	Symbol	Level	Function
1	VSS	—	GND(0V)
2	VDD	—	Supply Voltage for Logic(+5V)
3	V0	—	Power supply for LCD
4	RS	H/L	H: Data; L: Instruction Code
5	R/W	H/L	H: Read; L: Write
6	E	H/L	Enable Signal
7	DB0	H/L	Data Bus Line
8	DB1	H/L	
9	DB2	H/L	
10	DB3	H/L	
11	DB4	H/L	
12	DB5	H/L	
13	DB6	H/L	
14	DB7	H/L	
15	LEDA	—	Backlight Power(+5V)
16	LEDK	—	Backlight Power(0V)

