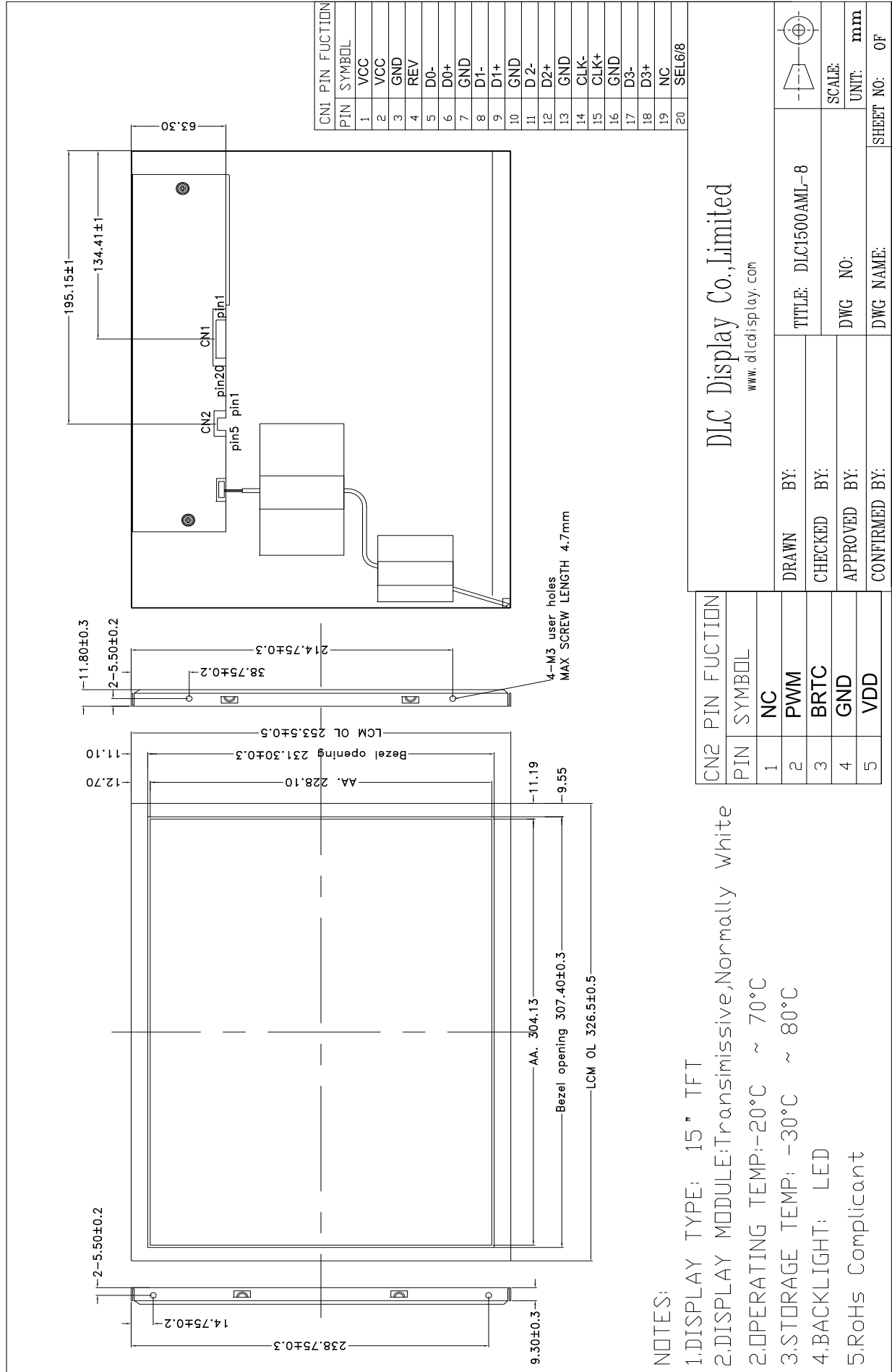


Outline Drawing



DLC Display Co., Limited
www.dlcdisplay.com

CN2 PIN	FUNCTION
1	NC
2	PWM
3	BRTC
4	GND
5	VDD

DRAWN BY:	TITLE: DLC1500AML-8	
CHECKED BY:	DWG NO:	
APPROVED BY:	DWG NAME:	UNIT: mm
CONFIRMED BY:		SHEET NO: 0F

- NOTES:
- 1.DISPLAY TYPE: 15" TFT
 - 2.DISPLAY MODULE: Transmissive, Normally White
 - 2.OPERATING TEMP: -20°C ~ 70°C
 - 3.STORAGE TEMP: -30°C ~ 80°C
 - 4.BACKLIGHT: LED
 - 5.RoHS Compliant