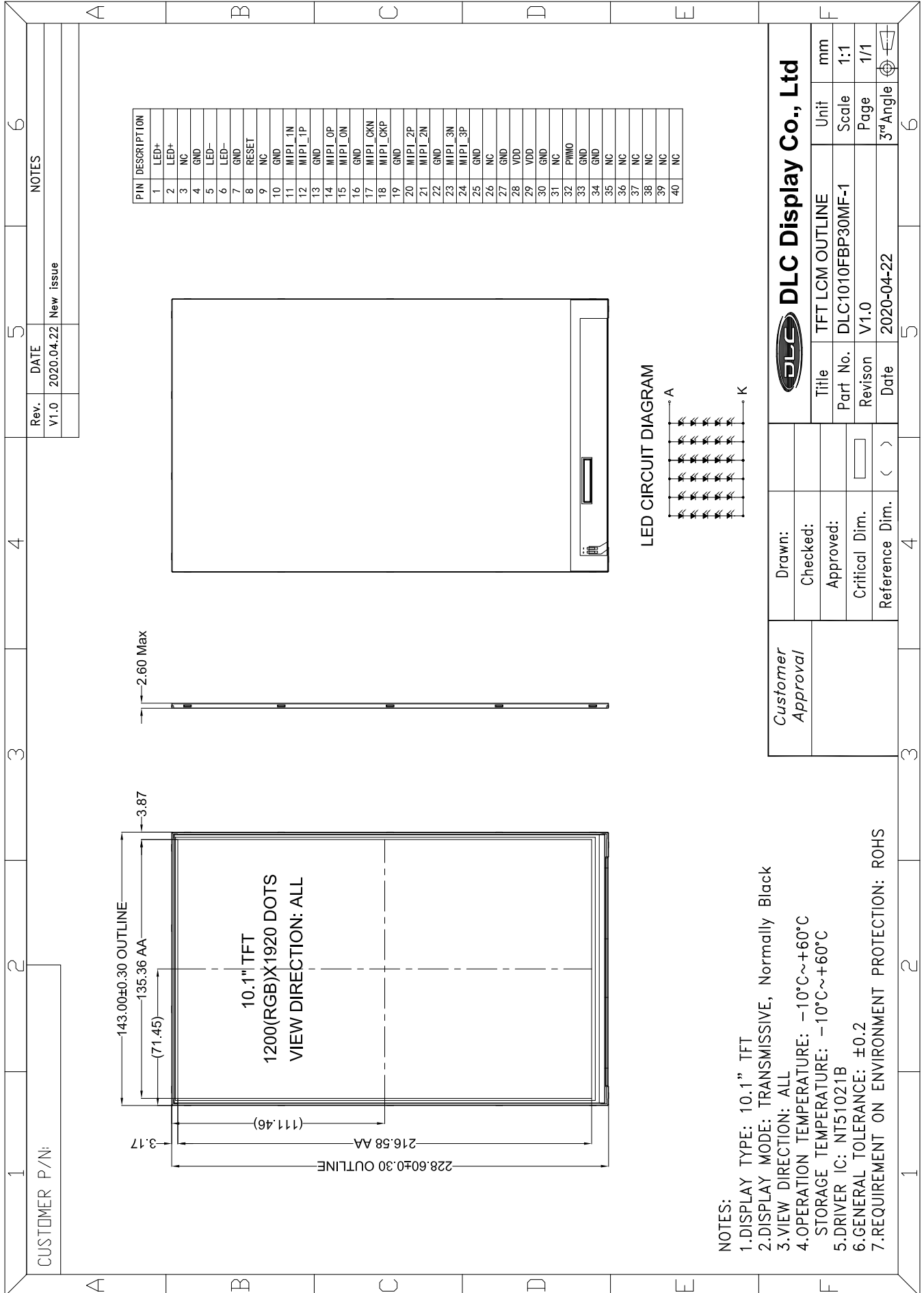


Outline Drawing



PIN	DESCRIPTION
1	LED+
2	LED+
3	NC
4	GND
5	LED-
6	LED-
7	GND
8	RESET
9	NC
10	GND
11	MIP1_1N
12	MIP1_1P
13	GND
14	MIP1_OP
15	MIP1_ON
16	GND
17	MIP1_CKN
18	MIP1_CKP
19	GND
20	MIP1_2P
21	MIP1_2N
22	GND
23	MIP1_3N
24	MIP1_3P
25	GND
26	NC
27	GND
28	VDD
29	VDD
30	GND
31	NC
32	PWM0
33	GND
34	GND
35	NC
36	NC
37	NC
38	NC
39	NC
40	NC

LED CIRCUIT DIAGRAM



NOTES:

- 1.DISPLAY TYPE: 10.1" TFT
- 2.DISPLAY MODE: TRANSMISSIVE, Normally Black
- 3.VIEW DIRECTION: ALL
- 4.OPERATION TEMPERATURE: -10°C~+60°C
STORAGE TEMPERATURE: -10°C~+60°C
- 5.DRIVER IC: NT51021B
- 6.GENERAL TOLERANCE: ±0.2
- 7.REQUIREMENT ON ENVIRONMENT PROTECTION: ROHS

Customer Approval	Drawn:	DLC Display Co., Ltd TFT LCM OUTLINE Part No. DLC1010FBP30MF-1 Revision V1.0 Date 2020-04-22		
	Checked:			
	Approved:			
	Critical Dim.			
Reference Dim.	()	Unit	mm	
		Scale	1:1	
		Page	1/1	
		3 rd Angle		