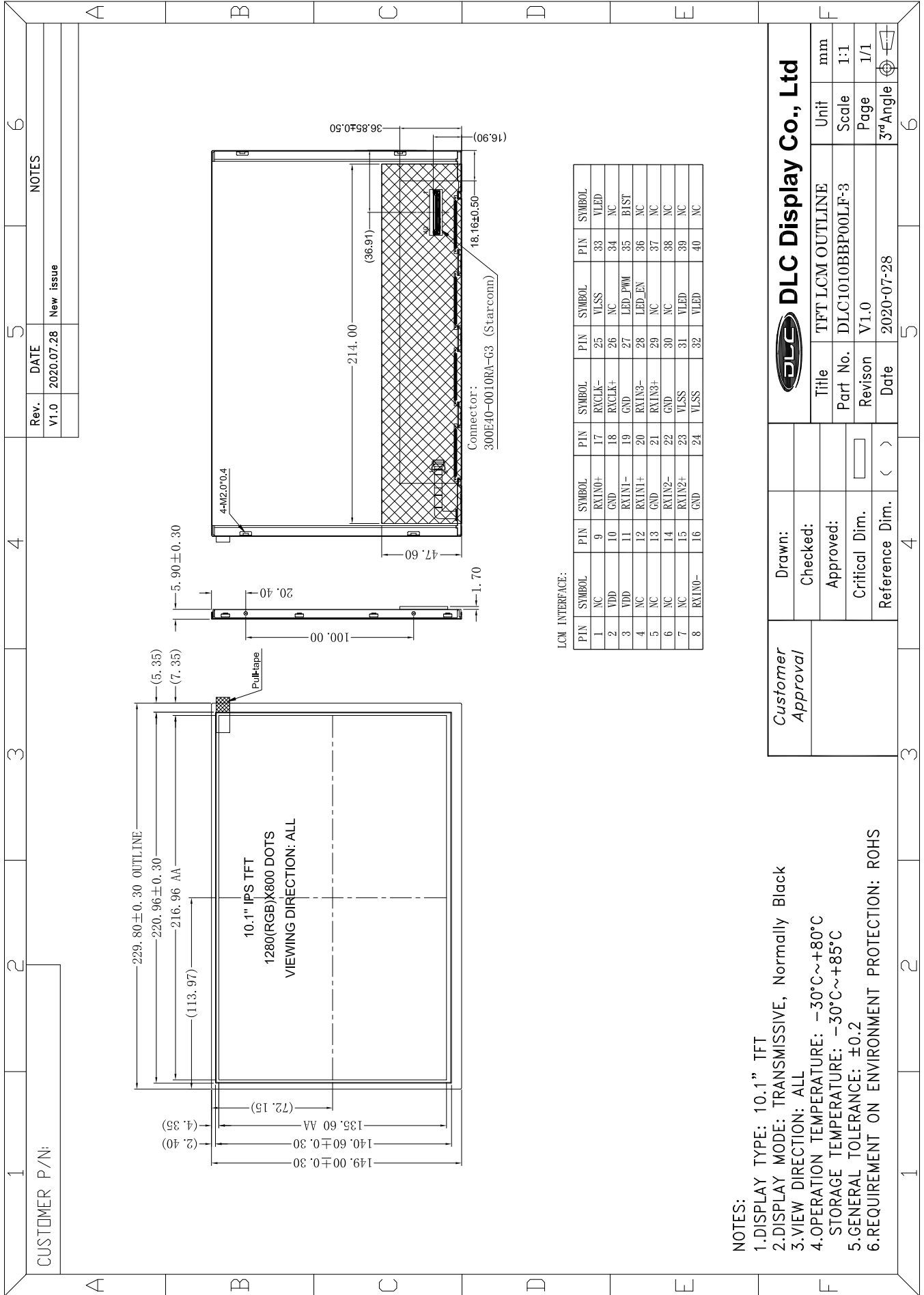


Outline Drawing



NOTES:

- 1.DISPLAY TYPE: 10.1" TFT
- 2.DISPLAY MODE: TRANSMISSIVE, Normally Black
- 3.VIEW DIRECTION: ALL
- 4.OPERATION TEMPERATURE: -30°C~+80°C  
STORAGE TEMPERATURE: -30°C~+85°C
- 5.GENERAL TOLERANCE: ±0.2
- 6.REQUIREMENT ON ENVIRONMENT PROTECTION: ROHS

Customer Approval

Drawn:  
Checked:  
Approved:  
Critical Dim.   
Reference Dim. ( )

**DLC Display Co., Ltd**

Title	TFT LCM OUTLINE	Unit	mm
Part No.	DLC1010BBP00LF-3	Scale	1:1
Revision	V1.0	Page	1/1
Date	2020-07-28	3 <sup>rd</sup> Angle	