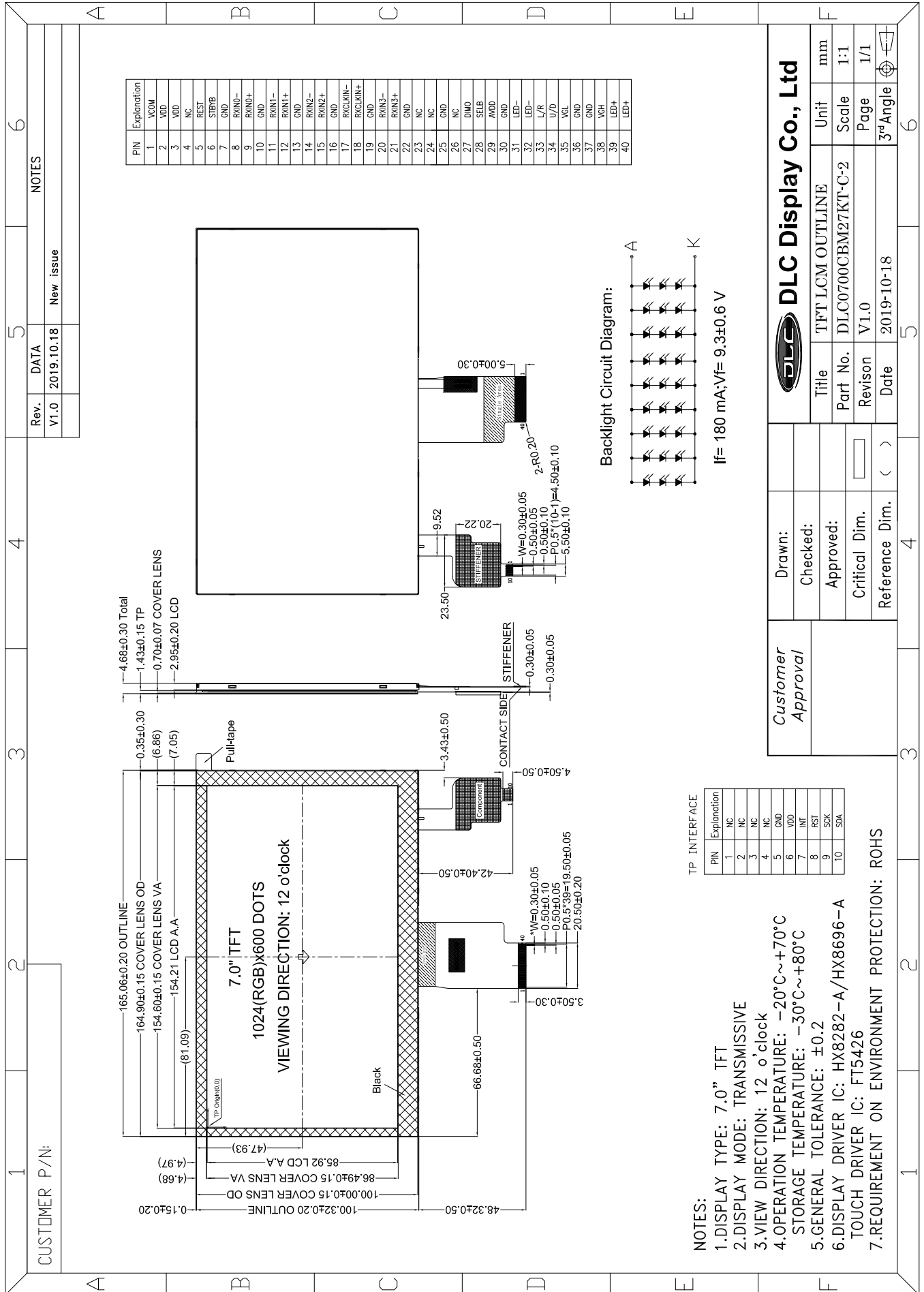


Outline Drawing



**NOTES:**

- 1.DISPLAY TYPE: 7.0" TFT
- 2.DISPLAY MODE: TRANSMISSIVE
- 3.VIEW DIRECTION: 12 o'clock
- 4.OPERATION TEMPERATURE: -20°C~+70°C  
STORAGE TEMPERATURE: -30°C~+80°C
- 5.GENERAL TOLERANCE: ±0.2
- 6.DISPLAY DRIVER IC: HX8282-A/HX8696-A  
TOUCH DRIVER IC: FT5426
- 7.REQUIREMENT ON ENVIRONMENT PROTECTION: ROHS

<b>DLC Display Co., Ltd</b>	
Title	TFT LCM OUTLINE
Part No.	DLC0700CBM27KT-C-2
Revision	V1.0
Date	2019-10-18
Scale	1:1
Page	1/1
3rd Angle	