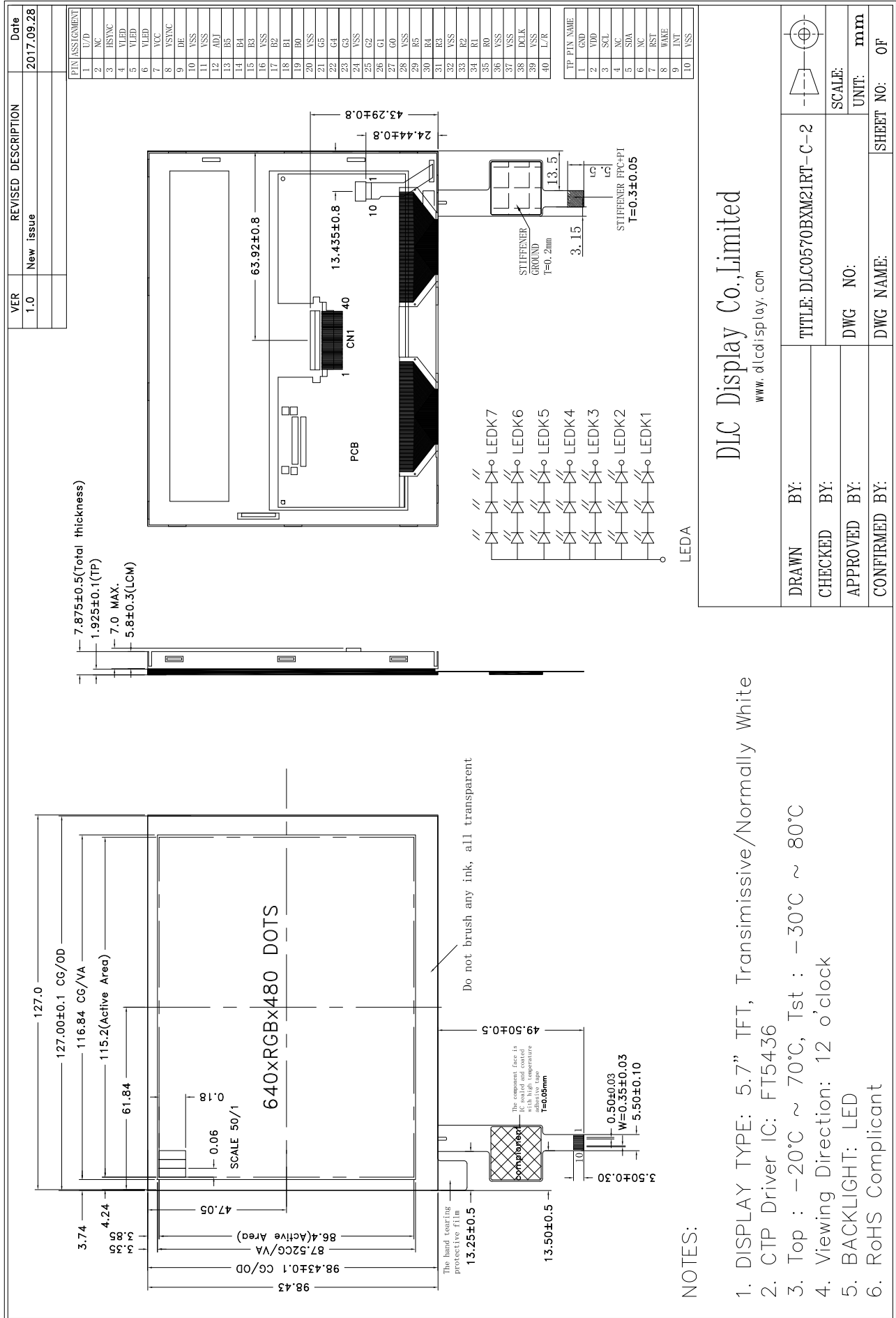


Outline Drawing



DLC Display Co., Limited

www.dlcdisplay.com

DRAWN BY:	BY:	TITLE: DLC0570BXM21RT-C-2	SCALE:	mm
CHECKED BY:	BY:	DWG NO:	UNIT:	OF
APPROVED BY:	BY:	DWG NAME:	SHEET NO:	
CONFIRMED BY:	BY:			

NOTES:

1. DISPLAY TYPE: 5.7" TFT, Transmissive/Normally White
2. CTP Driver IC: FT5436
3. Top : -20°C ~ 70°C, Tst : -30°C ~ 80°C
4. Viewing Direction: 12 o'clock
5. BACKLIGHT: LED
6. RoHS Compliant