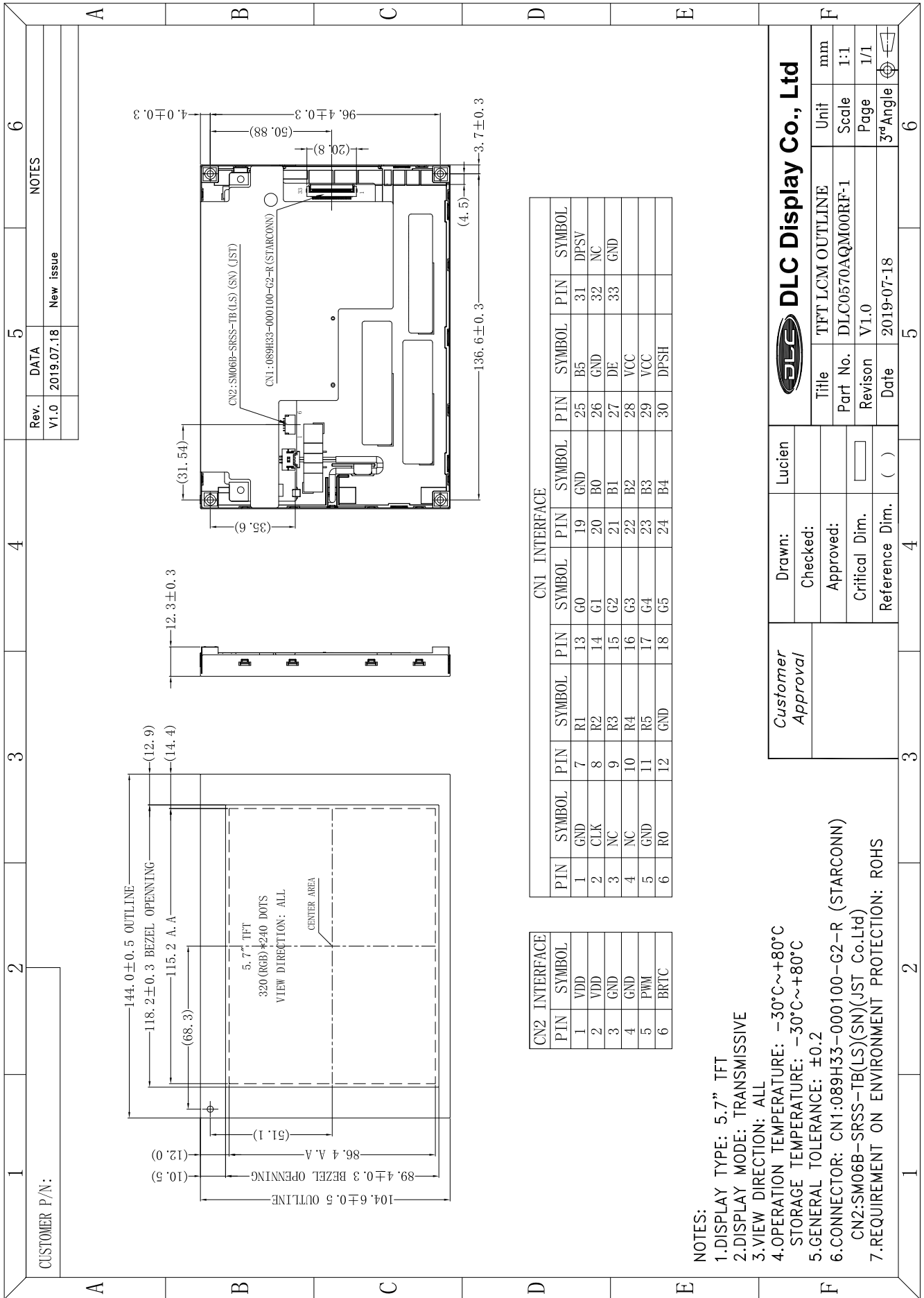


Outline Drawing



CN2 INTERFACE

PIN	SYMBOL
1	VDD
2	VDD
3	GND
4	GND
5	PWM
6	BRTC

CN1 INTERFACE

PIN	SYMBOL	PIN	SYMBOL	PIN	SYMBOL	PIN	SYMBOL
1	GND	7	R1	13	G0	19	GND
2	CLK	8	R2	14	G1	20	B0
3	NC	9	R3	15	G2	21	B1
4	NC	10	R4	16	G3	22	B2
5	GND	11	R5	17	G4	23	B3
6	R0	12	GND	18	G5	24	B4
						25	B5
						26	GND
						27	DE
						28	VCC
						29	VCC
						30	DPSH
						31	DPSV
						32	NC
						33	GND

- NOTES:**
 1.DISPLAY TYPE: 5.7" TFT
 2.DISPLAY MODE: TRANSMISSIVE
 3.VIEW DIRECTION: ALL
 4.OPERATION TEMPERATURE: -30°C~+80°C
 STORAGE TEMPERATURE: -30°C~+80°C
 5.GENERAL TOLERANCE: ±0.2
 6.CONNECTOR: CN1:089H33-000100-G2-R (STARCONN)
 CN2:SM06B-SRSS-TB(LS)(SN)(JST Co.Ltd)
 7.REQUIREMENT ON ENVIRONMENT PROTECTION: ROHS

Customer Approval		Lucien	
Drawn:		Checked:	
Approved:		Approved:	
Critical Dim.		Reference Dim.	()
DLC Display Co., Ltd		Title	TFT LCM OUTLINE
		Part No.	DLC0570AQM00RF-1
		Revision	V1.0
		Date	2019-07-18
		Unit	mm
		Scale	1:1
		Page	1/1
		3rd Angle	