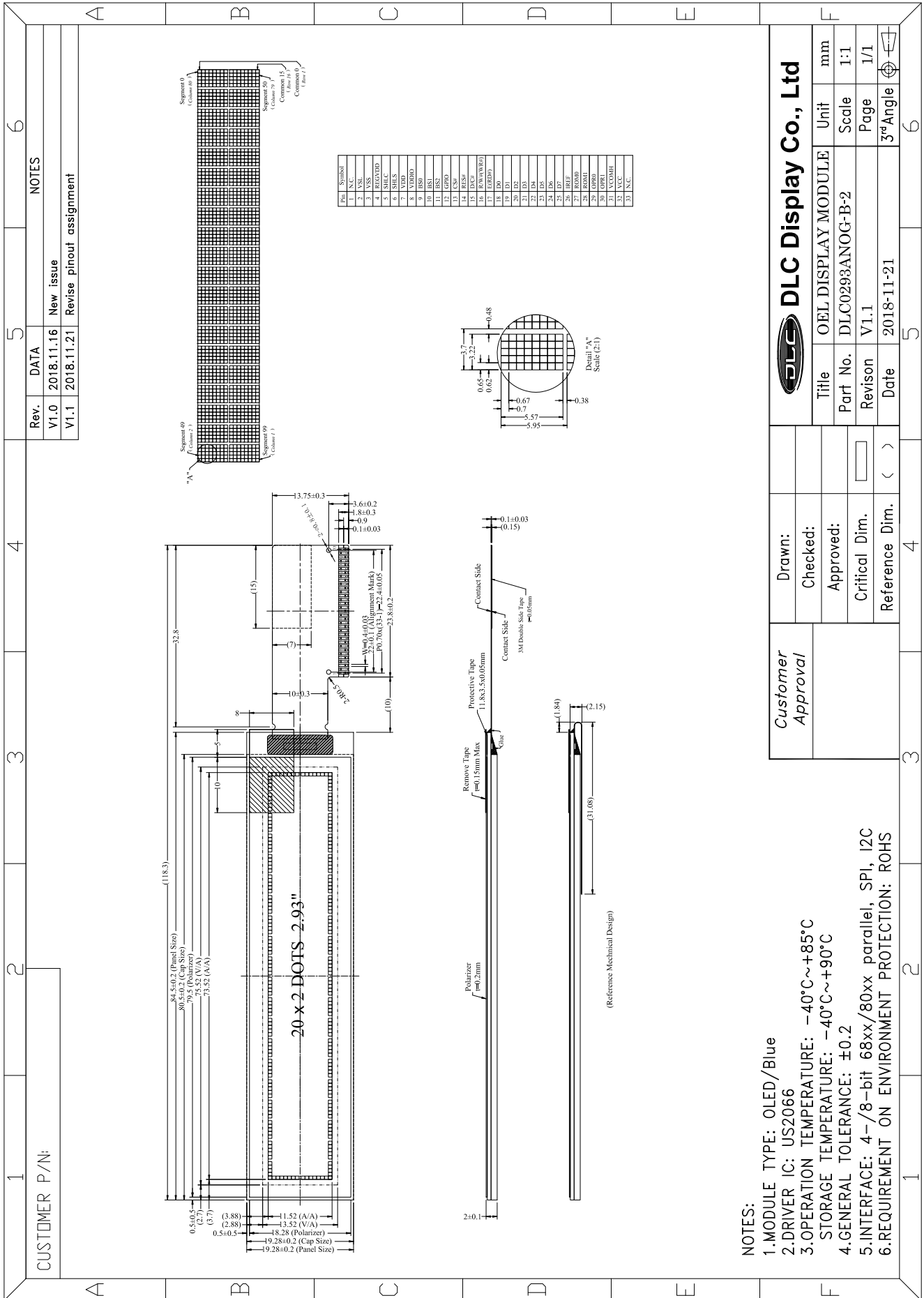


**Outline Drawing**



**DLC Display Co., Ltd**

Title	OEL DISPLAY MODULE	Unit	mm
Part No.	DLC0293ANOG-B-2	Scale	1:1
Revision	V1.1	Page	1/1
Date	2018-11-21	3rd Angle	

Drawn:	
Checked:	
Approved:	
Critical Dim.	
Reference Dim.	

**Customer Approval**

- NOTES:**
1. MODULE TYPE: OLED/Blue
  2. DRIVER IC: US2066
  3. OPERATION TEMPERATURE: -40°C ~ +85°C  
STORAGE TEMPERATURE: -40°C ~ +90°C
  4. GENERAL TOLERANCE: ±0.2
  5. INTERFACE: 4-/8-bit 68xx/80xx parallel, SPI, I2C
  6. REQUIREMENT ON ENVIRONMENT PROTECTION: ROHS