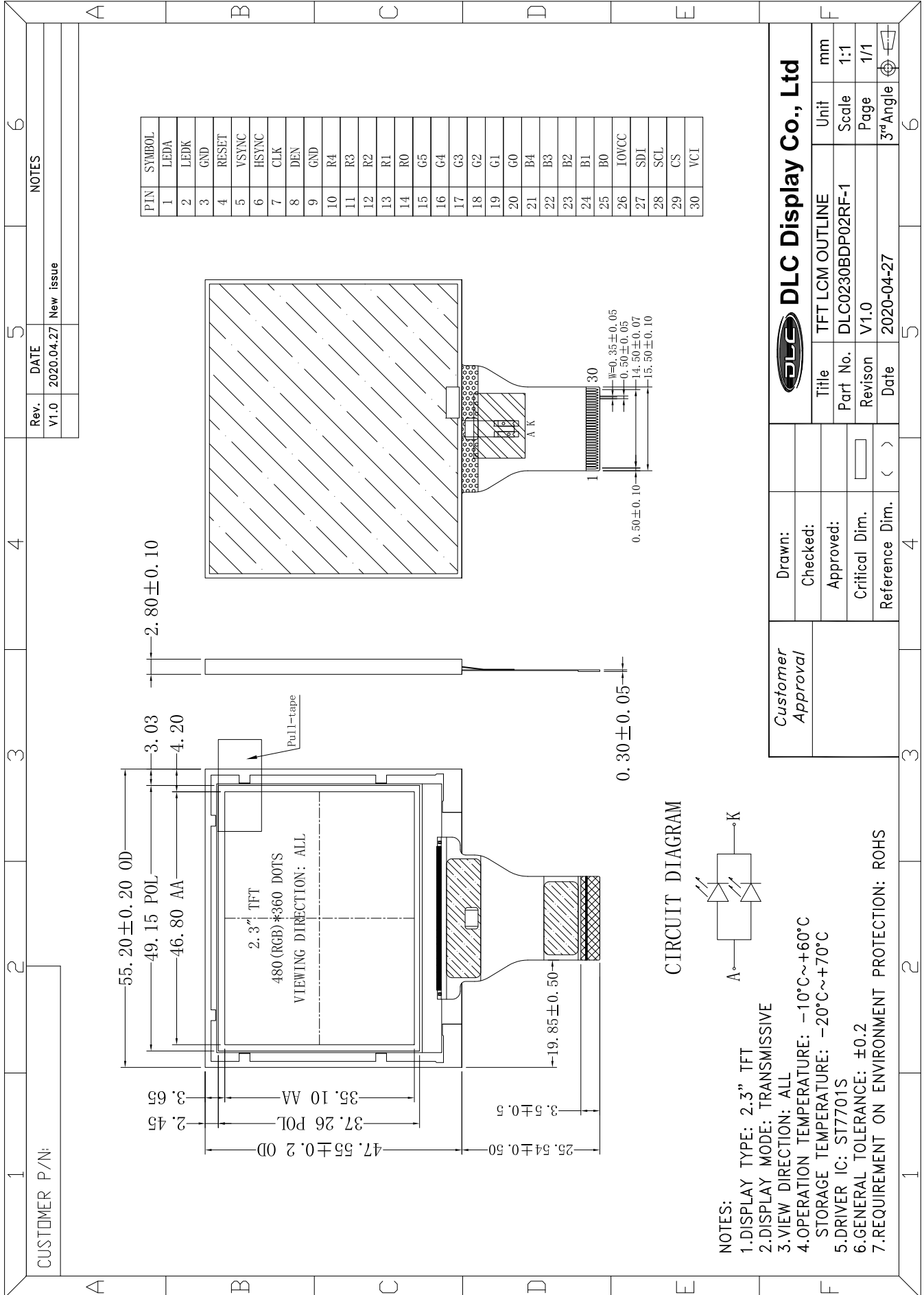
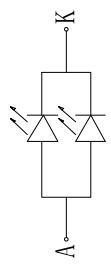


Outline Drawing



Pin	Symbol
1	LEDA
2	LEDK
3	GND
4	RESET
5	VSYNC
6	HSYNC
7	CLK
8	DEN
9	GND
10	R4
11	R3
12	R2
13	R1
14	R0
15	G5
16	G4
17	G3
18	G2
19	G1
20	G0
21	B4
22	B3
23	B2
24	B1
25	B0
26	IOVCC
27	SDI
28	SCL
29	CS
30	VCI

CIRCUIT DIAGRAM



- NOTES:
- 1.DISPLAY TYPE: 2.3" TFT
 - 2.DISPLAY MODE: TRANSMISSIVE
 - 3.VIEW DIRECTION: ALL
 - 4.OPERATION TEMPERATURE: -10°C~+60°C
STORAGE TEMPERATURE: -20°C~+70°C
 - 5.DRIVER IC: ST7701S
 - 6.GENERAL TOLERANCE: ±0.2
 - 7.REQUIREMENT ON ENVIRONMENT PROTECTION: ROHS

Customer Approval	Drawn:	DLC Display Co., Ltd			
	Checked:				
	Approved:	Title	TFT LCM OUTLINE	Unit	mm
	Critical Dim.	Part No.	DLC0230BDP02RF-1	Scale	1:1
	Reference Dim.	Revision	V1.0	Page	1/1
		Date	2020-04-27	3 rd Angle	

Rev.	DATE	NOTES
V1.0	2020.04.27	New Issue