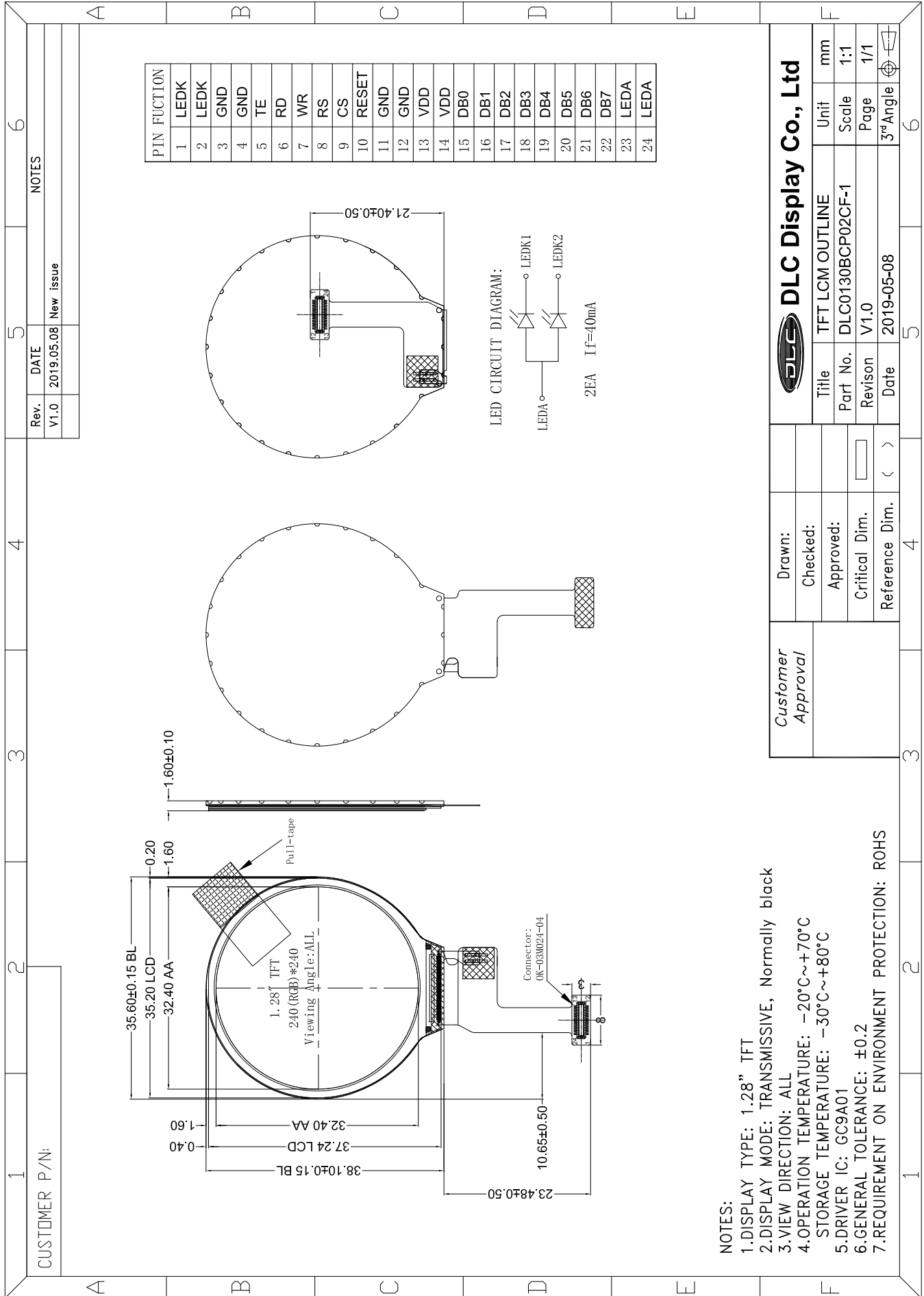


Outline Drawing



DLC Display Co., Ltd

Customer Approval	Drawn:		Unit	mm
	Checked:		Scale	1:1
	Approved:		Page	1/1
	Critical Dim.		3 rd Angle	
	Reference Dim.			

- NOTES:
- 1.DISPLAY TYPE: 1.28" TFT
 - 2.DISPLAY MODE: TRANSMISSIVE, Normally black
 - 3.VIEW DIRECTION: ALL
 - 4.OPERATION TEMPERATURE: -20°C~+70°C
STORAGE TEMPERATURE: -30°C~+80°C
 - 5.DRIVER IC: GC9A01
 - 6.GENERAL TOLERANCE: ±0.2
 - 7.REQUIREMENT ON ENVIRONMENT PROTECTION: ROHS