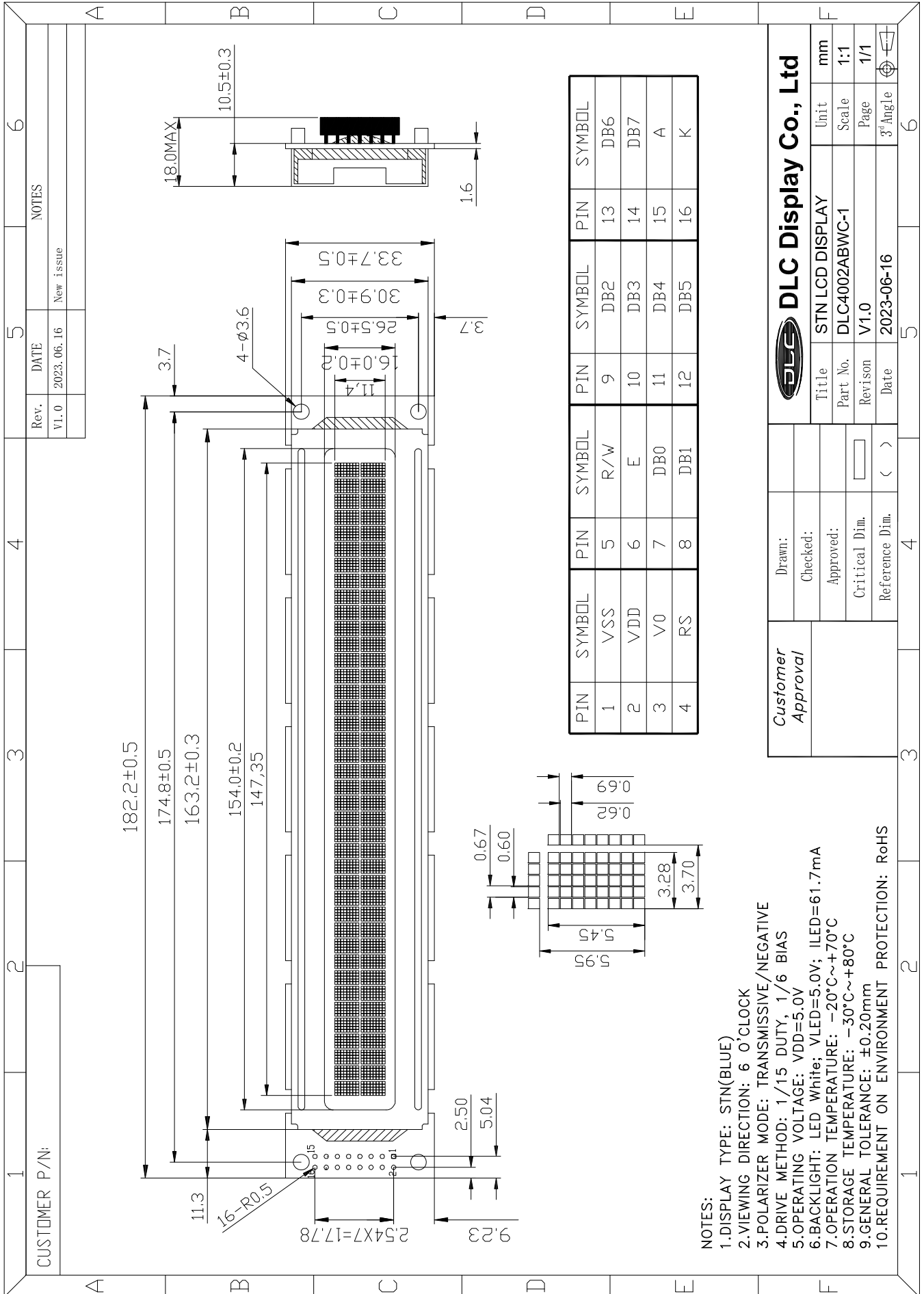


Outline Drawing



DLC DLC Display Co., Ltd

Customer Approval	Drawn:	Title	Unit
	Checked:	STN LCD DISPLAY	mm
	Approved:	Part No. DLC4002ABWC-1	Scale 1:1
	Critical Dim.	Revision V1.0	Page 1/1
	Reference Dim.	Date 2023-06-16	3° Angle

- NOTES:
- 1.DISPLAY TYPE: STN(BLUE)
 - 2.VIEWING DIRECTION: 6 O'CLOCK
 - 3.POLARIZER MODE: TRANSMISSIVE/NEGATIVE
 - 4.DRIVE METHOD: 1/15 DUTY, 1/6 BIAS
 - 5.OPERATING VOLTAGE: VDD=5.0V
 - 6.BACKLIGHT: LED White; VLED=5.0V; ILED=61.7mA
 - 7.OPERATION TEMPERATURE: -20°C~+70°C
 - 8.STORAGE TEMPERATURE: -30°C~+80°C
 - 9.GENERAL TOLERANCE: ±0.20mm
 - 10.REQUIREMENT ON ENVIRONMENT PROTECTION: RoHS