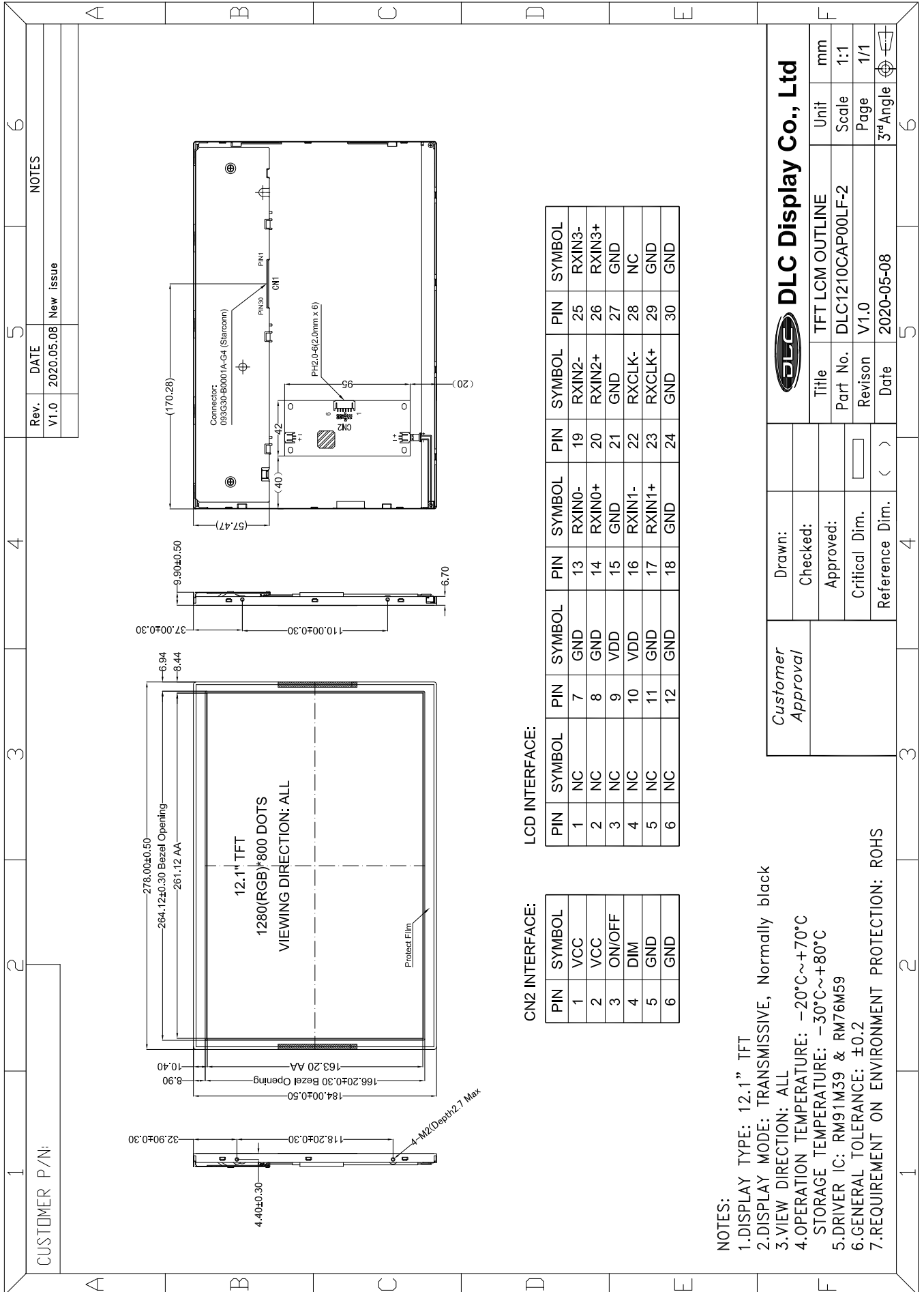


Outline Drawing



NOTES:

- 1.DISPLAY TYPE: 12.1" TFT
- 2.DISPLAY MODE: TRANSMISSIVE, Normally black
- 3.VIEW DIRECTION: ALL
- 4.OPERATION TEMPERATURE: -20°C~+70°C
- 5.DRIVER IC: RM91M39 & RM76M59
- 6.GENERAL TOLERANCE: ±0.2
- 7.REQUIREMENT ON ENVIRONMENT PROTECTION: ROHS

Customer Approval	Drawn:	DLC Display Co., Ltd			
	Checked:				
	Approved:				
	Critical Dim.				
	Reference Dim.				
		Title	TFT LCM OUTLINE	Unit	mm
		Part No.	DLC1210CAP00LF-2	Scale	1:1
		Revision	V1.0	Page	1/1
		Date	2020-05-08	3 rd Angle	