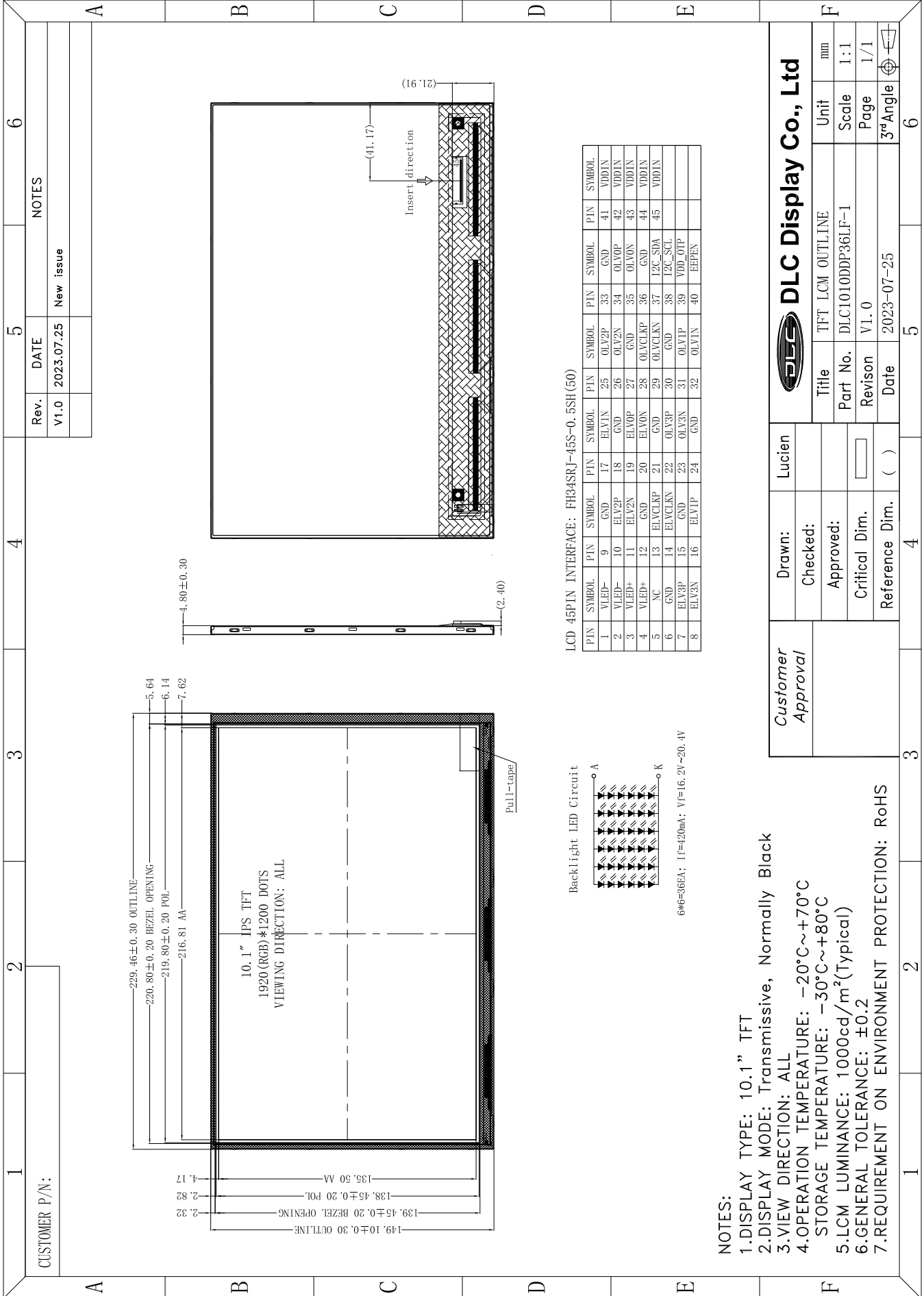


Outline Drawing



NOTES:

- 1. DISPLAY TYPE: 10.1" TFT
- 2. DISPLAY MODE: Transmissive, Normally Black
- 3. VIEW DIRECTION: ALL
- 4. OPERATION TEMPERATURE: -20°C~+70°C  
STORAGE TEMPERATURE: -30°C~+80°C
- 5. LCM LUMINANCE: 1000cd/m<sup>2</sup>(Typical)
- 6. GENERAL TOLERANCE: ±0.2
- 7. REQUIREMENT ON ENVIRONMENT PROTECTION: RoHS