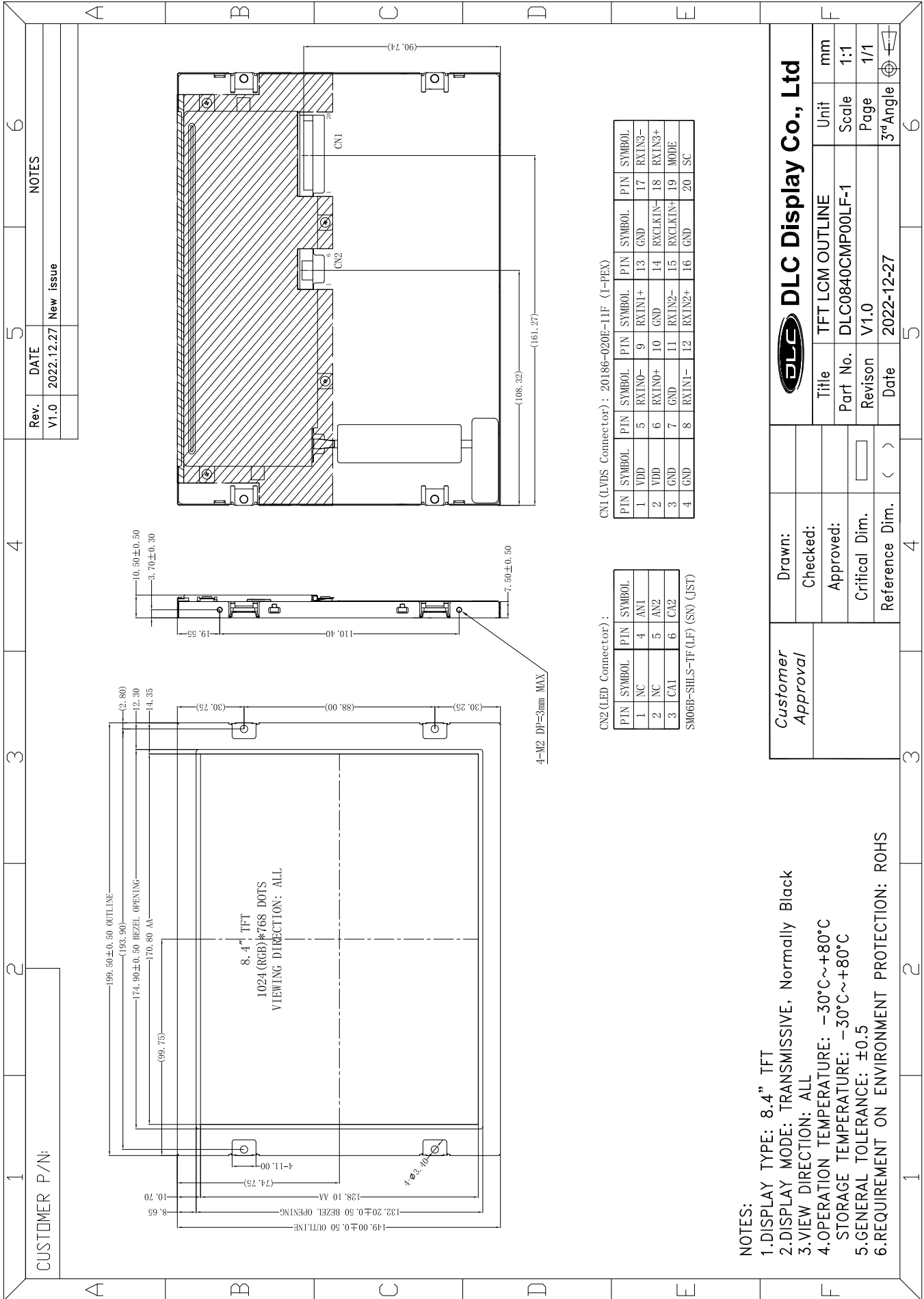




Outline Drawing



Rev.	DATE	NOTES
V1.0	2022.12.27	New issue

CN1 (LVDS Connector) : 20186-020E-11F (I-PEX)

PIN	SYMBOL	PIN	SYMBOL	PIN	SYMBOL	PIN	SYMBOL
1	VDD	5	RXIN0-	9	RXIN1+	13	GND
2	VDD	6	RXIN0+	10	GND	14	RXCLKIN-
3	GND	7	GND	11	RXIN2-	15	RXCLKIN+
4	GND	8	RXIN1-	12	RXIN2+	16	GND
						17	RXIN3-
						18	RXIN3+
						19	MODE
						20	SC

CN2 (LED Connector) :

PIN	SYMBOL	PIN	SYMBOL
1	NC	4	AN1
2	NC	5	AN2
3	CAL	6	CA2

SM06B-SHLS-TF(LF) (SN) (JST)

- NOTES:
- 1.DISPLAY TYPE: 8.4" TFT
 - 2.DISPLAY MODE: TRANSMISSIVE, Normally Black
 - 3.VIEW DIRECTION: ALL
 - 4.OPERATION TEMPERATURE: -30°C~+80°C
STORAGE TEMPERATURE: -30°C~+80°C
 - 5.GENERAL TOLERANCE: ±0.5
 - 6.REQUIREMENT ON ENVIRONMENT PROTECTION: ROHS

		DLC Display Co., Ltd	
Drawn:		Title	TFT LCM OUTLINE
Checked:		Part No.	DLC0840CMP00LF-1
Approved:		Revision	V1.0
Critical Dim.		Date	2022-12-27
Reference Dim.	< >	Unit	mm
		Scale	1:1
		Page	1/1
		3rd Angle	