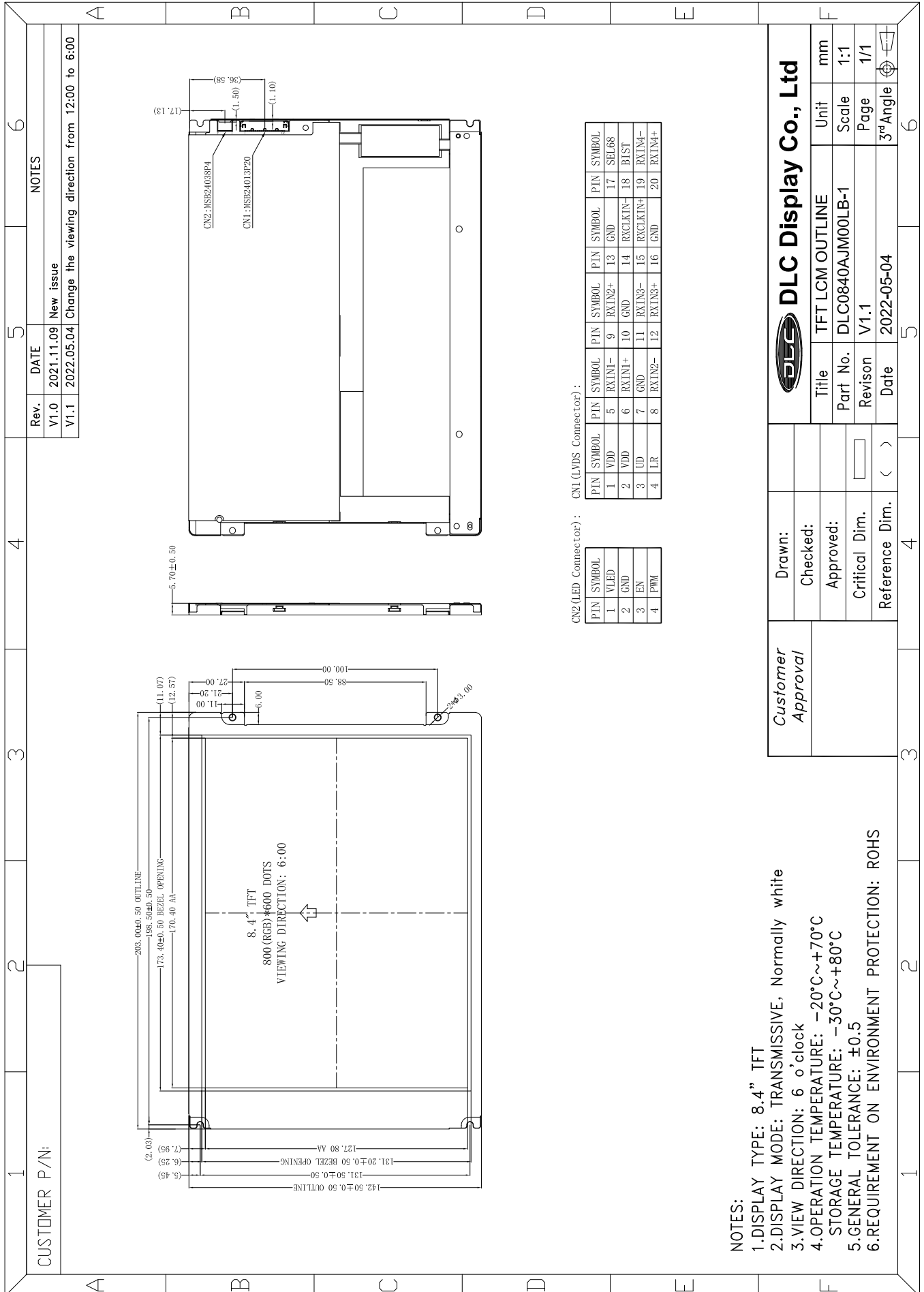




Outline Drawing



Rev.	DATE	NOTES
V1.0	2021.11.09	New issue
V1.1	2022.05.04	Change the viewing direction from 12:00 to 6:00

CN1 (LVDS Connector):

PTN	SYMBOL	PTN	SYMBOL	PTN	SYMBOL	PTN	SYMBOL
1	VDD	5	RXIN1-	9	RXIN2+	13	GND
2	VDD	6	RXIN1+	10	GND	14	RXCIN1-
3	UD	7	GND	11	RXIN3-	15	RXCIN1+
4	LR	8	RXIN2-	12	RXIN3+	16	GND
						17	SEL68
						18	BIST
						19	RXIN4-
						20	RXIN4+

CN2 (LED Connector):

PTN	SYMBOL
1	VLED
2	GND
3	EN
4	PWM

- NOTES:
- 1.DISPLAY TYPE: 8.4" TFT
  - 2.DISPLAY MODE: TRANSMISSIVE, Normally white
  - 3.VIEW DIRECTION: 6 o'clock
  - 4.OPERATION TEMPERATURE: -20°C~+70°C
  - 5.STORAGE TEMPERATURE: -30°C~+80°C
  - 6.GENERAL TOLERANCE: ±0.5
  - 7.REQUIREMENT ON ENVIRONMENT PROTECTION: ROHS

Customer Approval		DLC Display Co., Ltd	
Drawn:		Title	TFT LCM OUTLINE
Checked:		Part No.	DLC0840AJM00LB-1
Approved:		Revision	V1.1
Critical Dim.		Date	2022-05-04
Reference Dim.	( > )	Unit	mm
		Scale	1:1
		Page	1/1
		3 <sup>rd</sup> Angle	