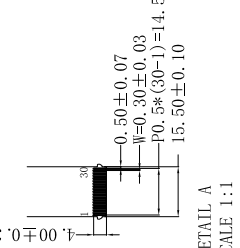
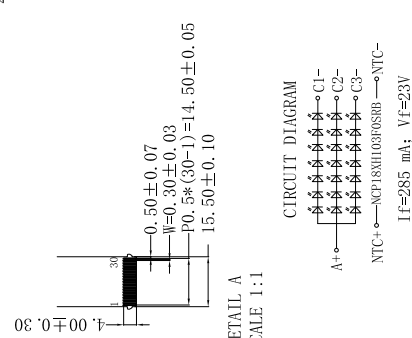
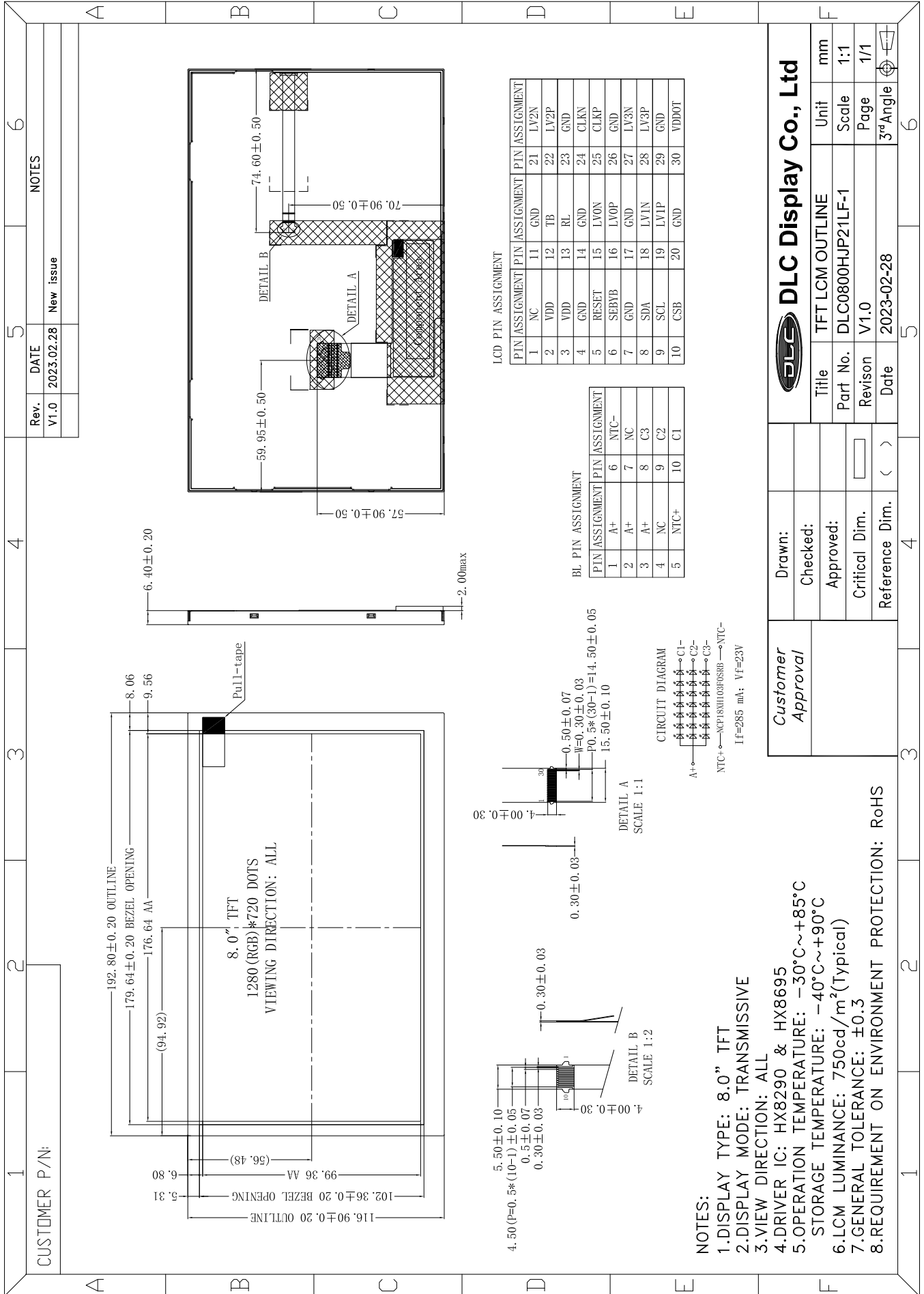




Outline Drawing



LCD PIN ASSIGNMENT

PIN	ASSIGNMENT	PIN	ASSIGNMENT	PIN	ASSIGNMENT
1	NC	11	GND	21	LV2N
2	VDD	12	TB	22	LV2P
3	VDD	13	RL	23	GND
4	GND	14	GND	24	CLKN
5	RESET	15	LVON	25	CLKP
6	SEBYB	16	LVOP	26	GND
7	GND	17	GND	27	LV3N
8	SDA	18	LVIN	28	LV3P
9	SCL	19	LVIP	29	GND
10	CSB	20	GND	30	VDDOT

BL PIN ASSIGNMENT

PIN	ASSIGNMENT	PIN	ASSIGNMENT
1	A+	6	NTC-
2	A+	7	NC
3	A+	8	C3
4	NC	9	C2
5	NTC+	10	C1

- NOTES:
- 1.DISPLAY TYPE: 8.0" TFT
  - 2.DISPLAY MODE: TRANSMISSIVE
  - 3.VIEW DIRECTION: ALL
  - 4.DRIVER IC: HX8290 & HX8695
  - 5.OPERATION TEMPERATURE: -30°C~+85°C
  - 6.LCM LUMINANCE: 750cd/m<sup>2</sup>(Typical)
  - 7.GENERAL TOLERANCE: ±0.3
  - 8.REQUIREMENT ON ENVIRONMENT PROTECTION: RoHS

**DLC Display Co., Ltd**

Title		TFT LCM OUTLINE	Unit	mm
Part No.		DLC0800HJP21LF-1	Scale	1:1
Revision		V1.0	Page	1/1
Date		2023-02-28	3 <sup>rd</sup> Angle	

Customer Approval	Drawn:
	Checked:
	Approved:
	Critical Dim.
	Reference Dim.