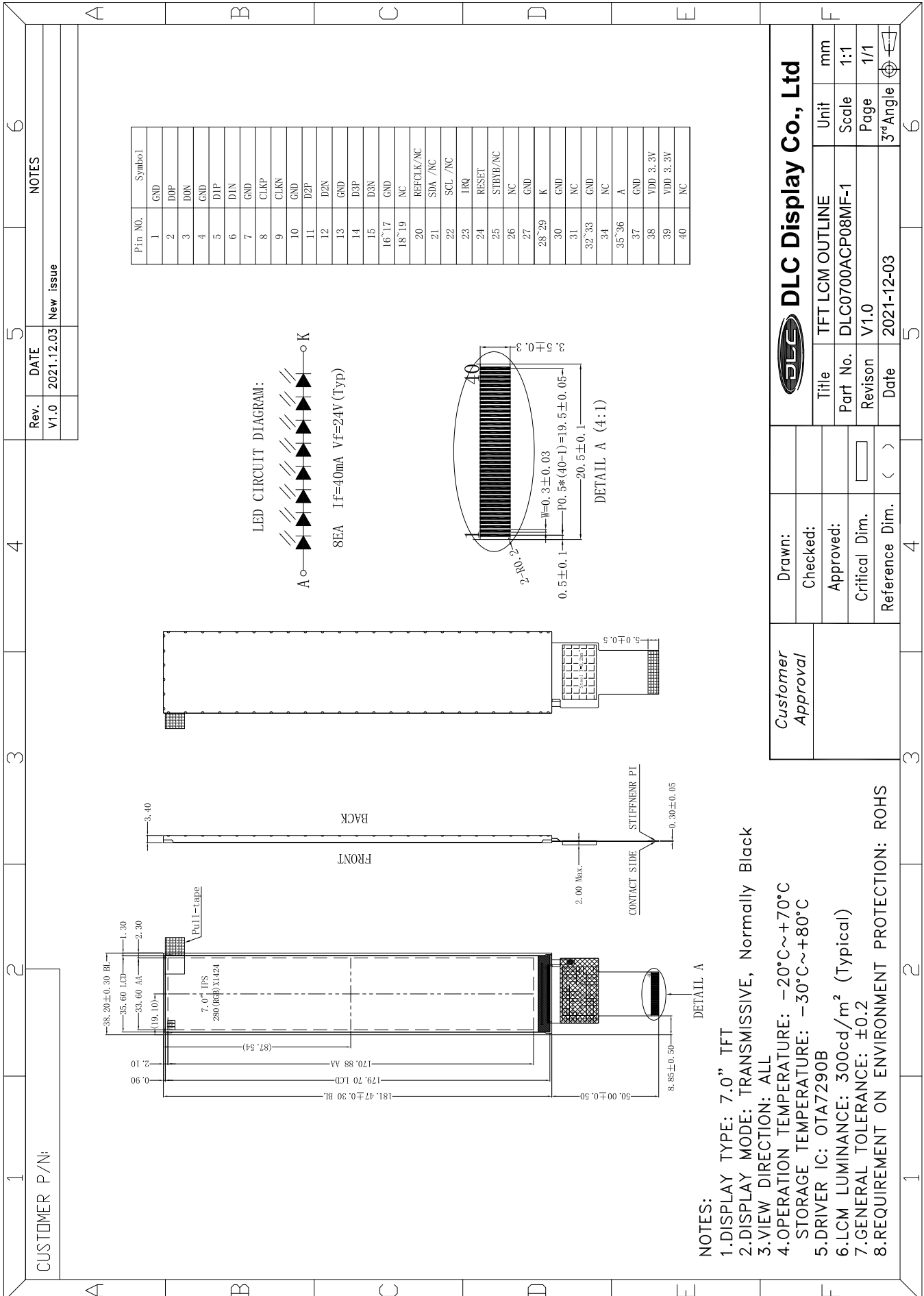


Outline Drawing



DLC Display Co., Ltd

Drawn:	
Checked:	
Approved:	
Critical Dim.	
Reference Dim.	< >

- NOTES:**
- 1.DISPLAY TYPE: 7.0" TFT
 - 2.DISPLAY MODE: TRANSMISSIVE, Normally Black
 - 3.VIEW DIRECTION: ALL
 - 4.OPERATION TEMPERATURE: -20°C~+70°C
STORAGE TEMPERATURE: -30°C~+80°C
 - 5.DRIVER IC: OTA7290B
 - 6.LCM LUMINANCE: 300cd/m² (Typical)
 - 7.GENERAL TOLERANCE: ±0.2
 - 8.REQUIREMENT ON ENVIRONMENT PROTECTION: ROHS