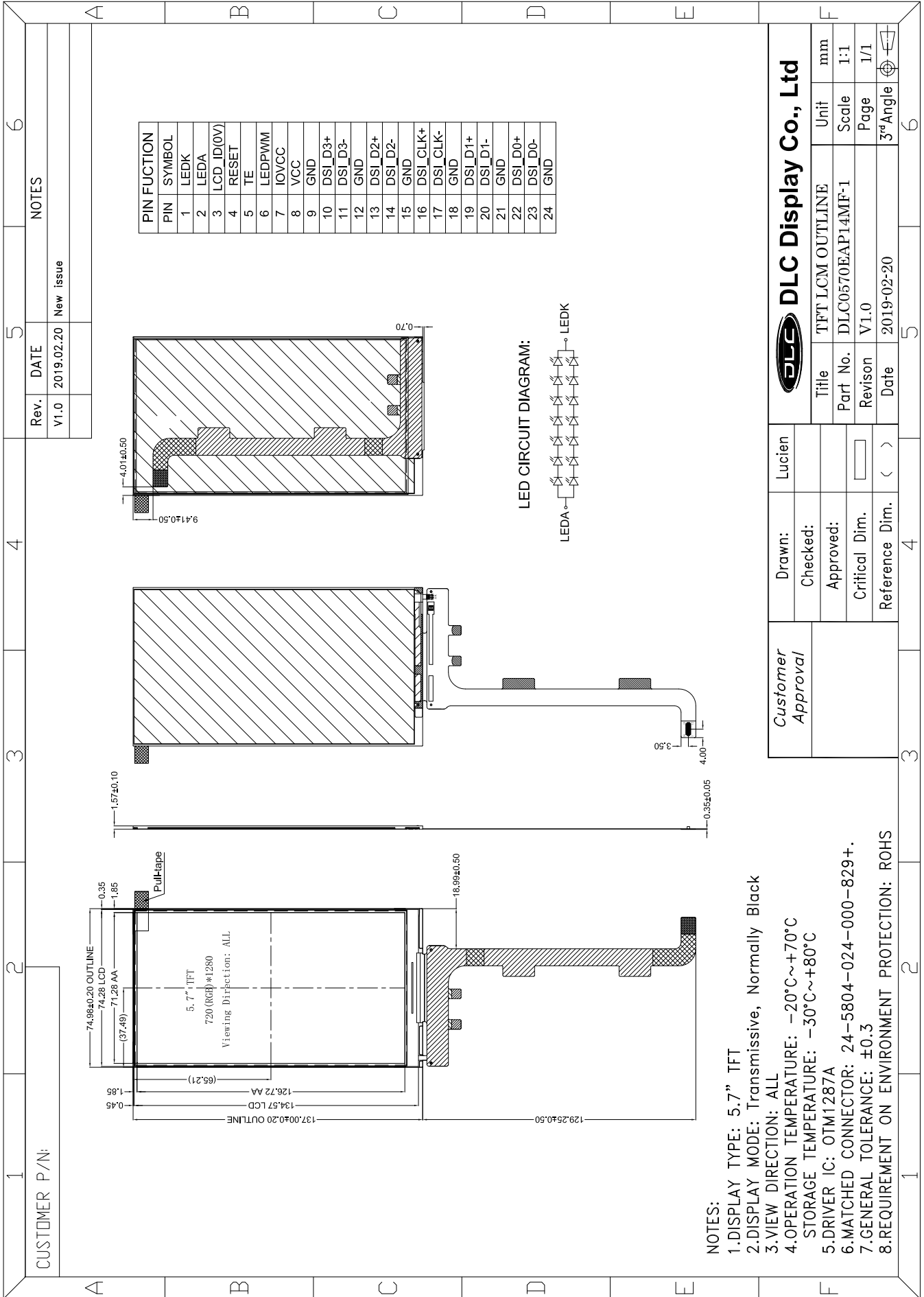




Outline Drawing



- NOTES:**
- 1.DISPLAY TYPE: 5.7" TFT
  - 2.DISPLAY MODE: Transmissive, Normally Black
  - 3.VIEW DIRECTION: ALL
  - 4.OPERATION TEMPERATURE: -20°C~+70°C  
STORAGE TEMPERATURE: -30°C~+80°C
  - 5.DRIVER IC: OTM1287A
  - 6.MATCHED CONNECTOR: 24-5804-024-000-829+.
  - 7.GENERAL TOLERANCE: ±0.3
  - 8.REQUIREMENT ON ENVIRONMENT PROTECTION: ROHS

<i>Customer Approval</i>	Drawn:	Lucien		<b>DLC Display Co., Ltd</b>			
	Checked:			Title	TFT LCM OUTLINE	Unit	mm
	Approved:			Part No.	DLC0570EAP14MF-1	Scale	1:1
	Critical Dim.			Revision	V1.0	Page	1/1
	Reference Dim.	( )	Date	2019-02-20	3 <sup>rd</sup> Angle		