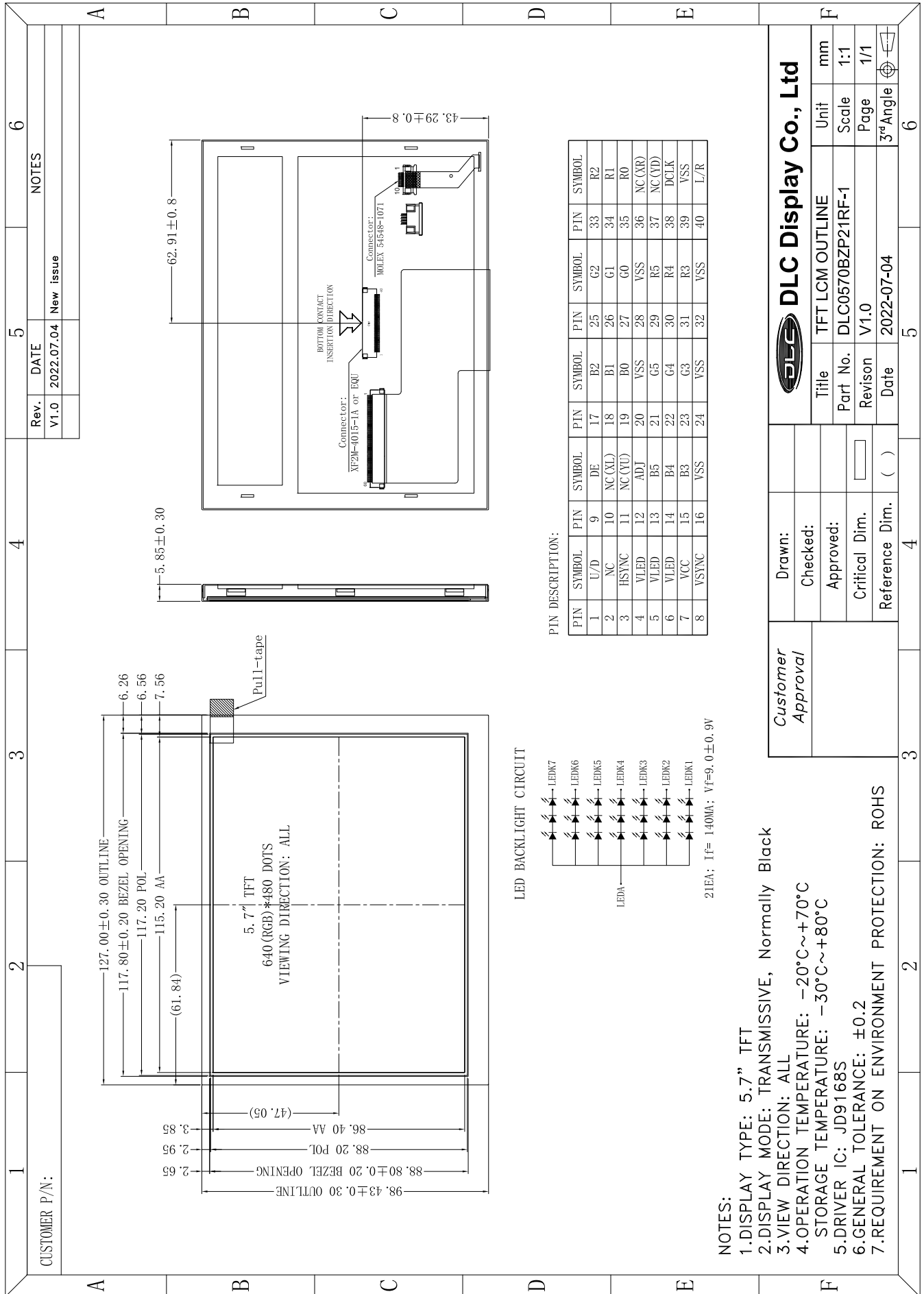
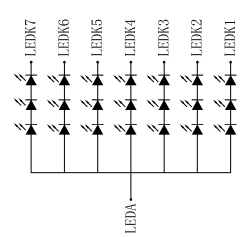


Outline Drawing



LED BACKLIGHT CIRCUIT



PIN DESCRIPTION:

PIN	SYMBOL	PIN	SYMBOL	PIN	SYMBOL	PIN	SYMBOL	PIN	SYMBOL
1	U/D	9	DE	17	B2	25	G2	33	R2
2	NC	10	NC(XL)	18	B1	26	G1	34	R1
3	H SYNC	11	NC(VU)	19	B0	27	G0	35	R0
4	VLED	12	ADJ	20	VSS	28	VSS	36	NC(XF)
5	VLED	13	B5	21	G5	29	R5	37	NC(YD)
6	VLED	14	B4	22	G4	30	R4	38	DCLK
7	VCC	15	B3	23	G3	31	R3	39	VSS
8	V SYNC	16	VSS	24	VSS	32	VSS	40	L/R

NOTES:

- 1.DISPLAY TYPE: 5.7" TFT
- 2.DISPLAY MODE: TRANSMISSIVE, Normally Black
- 3.VIEW DIRECTION: ALL
- 4.OPERATION TEMPERATURE: -20°C~+70°C  
STORAGE TEMPERATURE: -30°C~+80°C
- 5.DRIVER IC: JD9168S
- 6.GENERAL TOLERANCE: ±0.2
- 7.REQUIREMENT ON ENVIRONMENT PROTECTION: ROHS

Customer Approval	Drawn:		<b>DLC Display Co., Ltd</b>	Unit	mm		
	Checked:			Title	TFT LCM OUTLINE	Scale	1:1
	Approved:			Part No.	DLC0570BZP21RF-1	Page	1/1
	Critical Dim.			Revision	V1.0	3°Angle	
Reference Dim.	( )	Date	2022-07-04				